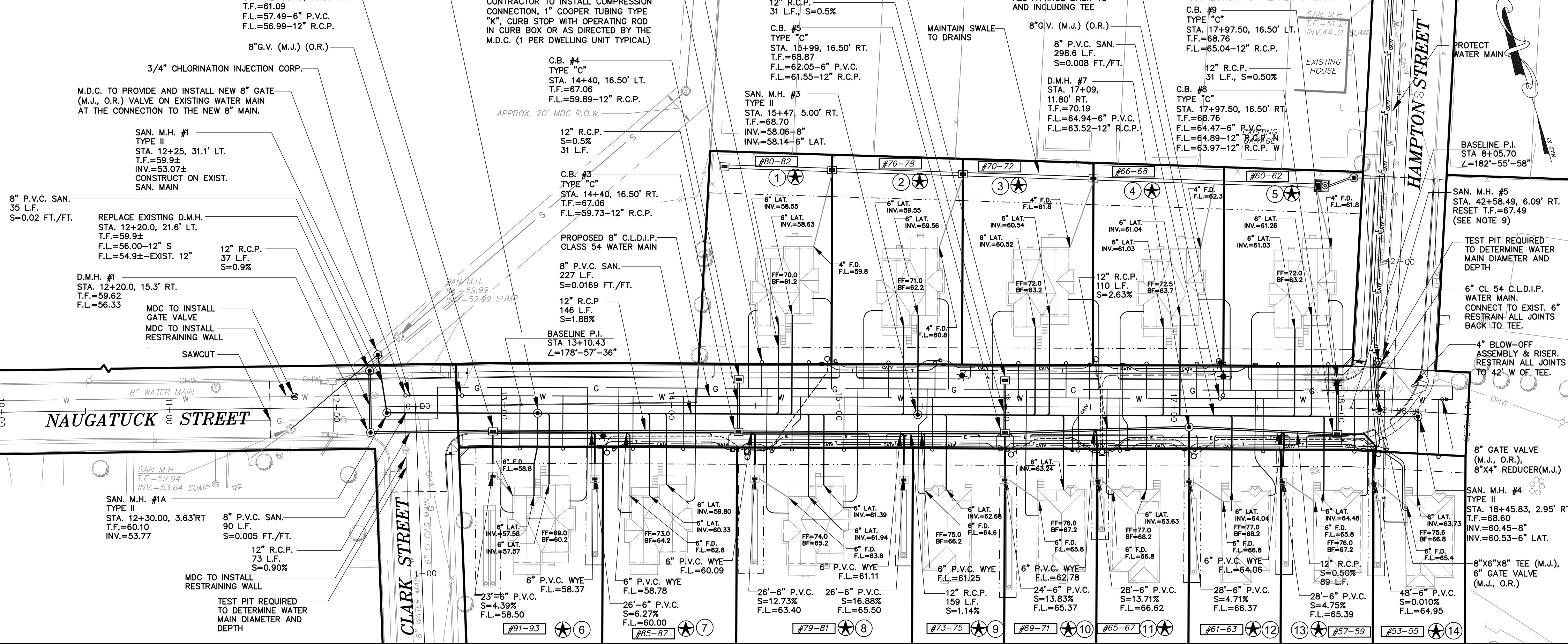


NOTE:
ALL WORK WITHIN THE CITY OF HARTFORD R.O.W. SHALL CONFORM TO THE CITY OF HARTFORD PUBLIC IMPROVEMENTS SPECIFICATIONS, THE M.D.C. & CUSTODIAL UTILITY COMPANY REQUIREMENTS. THE DEVELOPER OF EACH LOT SHALL BE RESPONSIBLE FOR OBTAINING ALL LOCAL & STATE PERMITS. THE SUBDIVIDER SHALL FURNISH THE CITY OF HARTFORD CERTIFIED AS-BUILT PRIOR TO ROAD ACCEPTANCE.



LEGEND (SYMBOLS NOT TO SCALE)

- CATCH BASIN
- SANITARY MANHOLE
- DRAINAGE MANHOLE
- WATER MANHOLE
- TELEPHONE MANHOLE
- UNKNOWN MANHOLE
- YARD DRAIN
- CABLE MANHOLE
- FLARED END SECTION
- WATER GATE VALVE
- GAS GATE VALVE
- WISS. GATE VALVE
- VENT PIPE
- FILL CAP
- WELL
- MAIL BOX
- HAND HOLE
- CONTROLLER CABINET
- ELECTRIC TRANSFORMER
- UTILITY POLE
- GUY WIRE
- CROSSWALK POLE
- WELL
- POST
- TRAFFIC LIGHT SUPPORT POLE
- STREET SIGN
- TREE (TYP.)
- MONITOR WELL
- BORING
- ELECTRIC METER
- GAS METER
- WATER METER
- AC UNIT
- TREE LINE
- UTILITY POLE
- GUIDE RAIL
- DIRECTION OF FLOW
- I.P. PROPERTY CORNER
- MONUMENT
- DRILL HOLE
- SURVEY CONTROL POINT
- FENCE LINE
- WATER LINE
- GAS LINE
- ELECTRIC LINE
- CABLE TELEVISION LINE
- OVERHEAD WIRES
- POINT OF BEGINNING
- NORTHING
- EASTING
- NOW OR FORMERLY
- XXX LAND RECORDS
- DELTA ANGLE
- RADIUS
- TANGENT
- CHORD
- CHORD BEARING
- FRONT YARD
- SIDE YARD
- REAR YARD
- CATV
- SURVEY CONTROL POINT

PROPOSED LEGEND

- PROPOSED CATCH BASIN
- PROPOSED SANITARY MANHOLE
- PROPOSED DRAINAGE MANHOLE
- PROPOSED WATER GATE VALVE
- PROPOSED HYDRANT
- PROPOSED STORM DRAINAGE
- PROPOSED SANITARY SEWER
- PROPOSED GAS LINE
- PROPOSED WATER LINE
- PROPOSED ELECTRIC LINE
- PROPOSED TELEPHONE LINE
- PROPOSED CABLE TELEVISION LINE
- PROPOSED LIGHT STANDARD

GRAPHIC SCALE
(IN FEET)
1 inch = 40 ft.

WATER, SEWER & HYDRANT APPROVAL

APPROVED BY:

TOWN ENGINEER _____ DATE _____

FIRE MARSHALL _____ DATE _____

FIRE MARSHALL TO DENOTE IF HYDRANT ARE TO BE PUBLIC OR PRIVATE (CHECK APPROPRIATE BOX)

PUBLIC PRIVATE

DEVELOPER _____ DATE _____

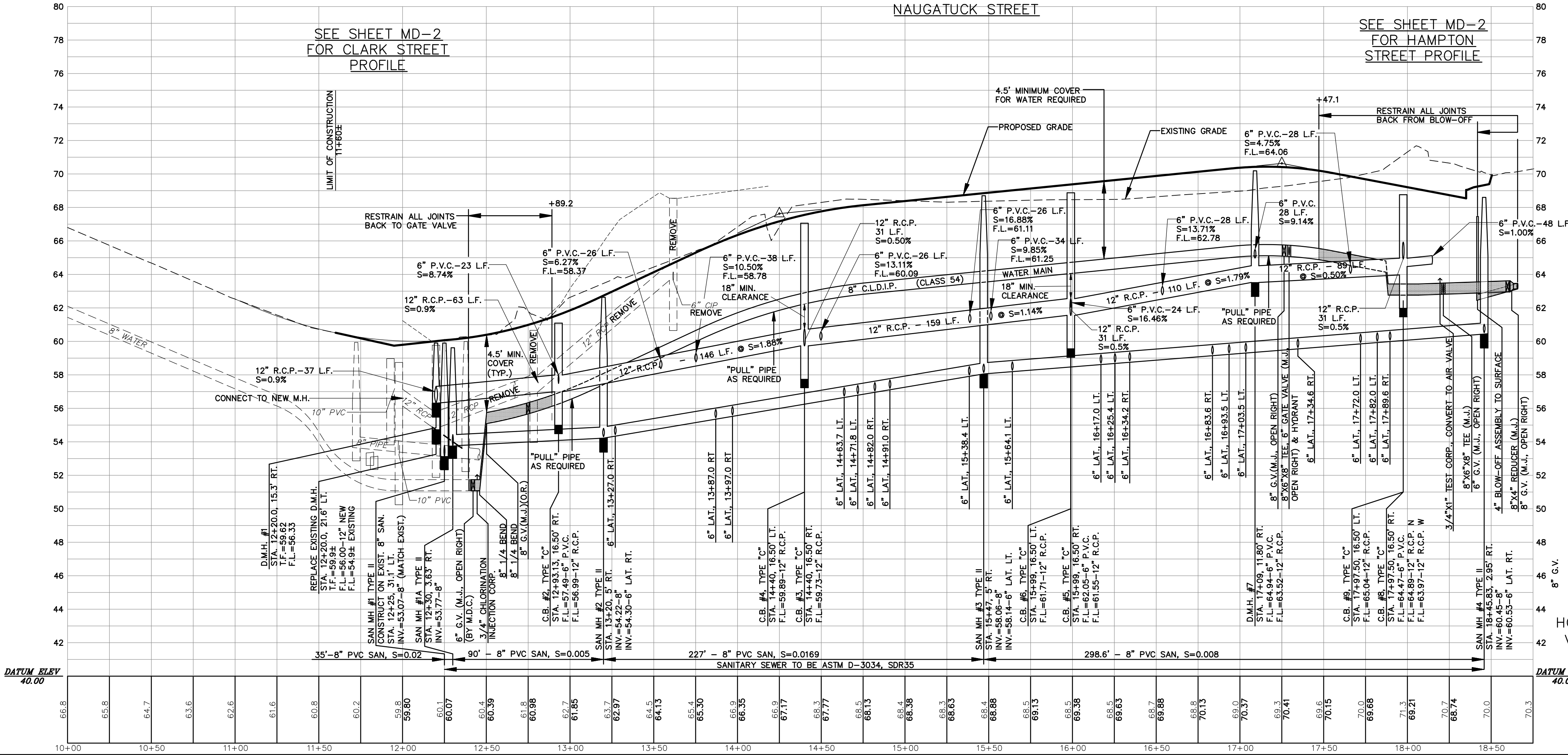
APPROVED BY TOWN PLANNING & ZONING COMMISSION

DATE: _____

SIGN: _____

MDC CODE: BRACKETT SCHOOL HOUSING HARTFORD

WATER: BILDVSHAR 10
SANITARY: BILDVSHAR 18
STORM: BILDVSHAR XX



BEARINGS AND COORDINATES DEPICTED HEREON REFER TO THE 1927 NORTH AMERICAN DATUM (NAD 27). MDC MON #77184 N = 348,434.23 AND E = 621,305.12 & MDC MON # 77185 N = 347,910.62 AND E = 620,917.27 WERE USED FOR REFERENCE.

ELEVATIONS DEPICTED HEREON REFER TO THE 1988 NORTH AMERICAN VERTICAL DATUM (NAVD88) BASED ON GPS RAPID STATIC OBSERVATIONS TAKEN ON JULY 20, 2017 AND OPUS PROCESSING RESULTS ON HARTFORD MDC STATION #HH-115 ELEVATION = 78.73.

NOTES:

- ALL SANITARY MANHOLES ARE TYPE II UNLESS OTHERWISE NOTED.
- ALL EXISTING UTILITIES TO BE PROTECTED AND SUPPORTED AS REQUIRED.
- FOR STANDARD SANITARY SEWER AND WATER NOTES SEE SHEET MDC NT-1.
- WATER SERVICE AND SANITARY LATERAL SHOWN FOR ROAD CONSTRUCTION ONLY. SEWER LATERALS AND WATER SERVICES SHALL BE INSTALLED IN AN MDC APPROVED MANNER.
- IF 6-INCH LATERALS HAVE LESS THAN 18-INCHES OF VERTICAL CLEARANCE WITH THE WATER MAIN, SEE DETAILS FOR WATER CROSSING BELOW AND ABOVE SEWER PIPE ON SHEET MDC SD-6. PIPES WILL BE REQUIRED TO BE CENTERED AT THE CROSSING AT A MINIMUM.
- WATER MAIN TEST PRESSURE 150 PSI.
- IF THE EXISTING WATER MAIN HAS LESS THAN 4.5 FEET OF COVER TO THE PROPOSED GRADE, THE WATER MAIN SHALL BE LOWERED BY MDC FORCES TO PROVIDE 4.5' OF COVER, OR COVERED WITH MDC APPROVED INSULATION MATERIAL BY MDC FORCES.
- PROTECT ALL EXISTING UTILITIES TO REMAIN.
- RECONSTRUCT DISTURBED PORTIONS OF NAUGATUCK AND CLARK STREETS TO CITY STANDARDS.

SCALE
HORIZ.: 1" = 40'
VERT.: 1" = 4'

ELEVATIONS ARE BASED ON NAVD88 DATUM

FAH F. A. Hesketh & Associates, Inc.
3 Creamery Brook, East Granby, CT 06026
Civil & Traffic Engineers • Surveyors • Landscape Architects

Phone (860) 653-8000
Fax (860) 344-8600
e-mail: fah@fahinc.com

MD-1

PLAN AND PROFILE
MDC WATER, SANITARY & STORM
CITY OF HARTFORD
NAUGATUCK STREET EXTENSION
HARTFORD, CONNECTICUT

Drawn by: CAD Job no: 04193
Checked by: DSZ Street no: 1 OF 2
Scale: 1" = 40' MDC/NAVD07.dwg, Nov. 14, 2018 - 3:12:34 PM

Revisions:

No.	Date	Description
1	05-31-06	City Comments
2	03-13-08	City Comments
3	04-03-08	City Comments
4	05-09-08	City Comments
5	08-07-17	Datum
6	08-02-18	MDC Comments
7	10-16-18	MDC Comments
8	11-13-18	Addendum #2