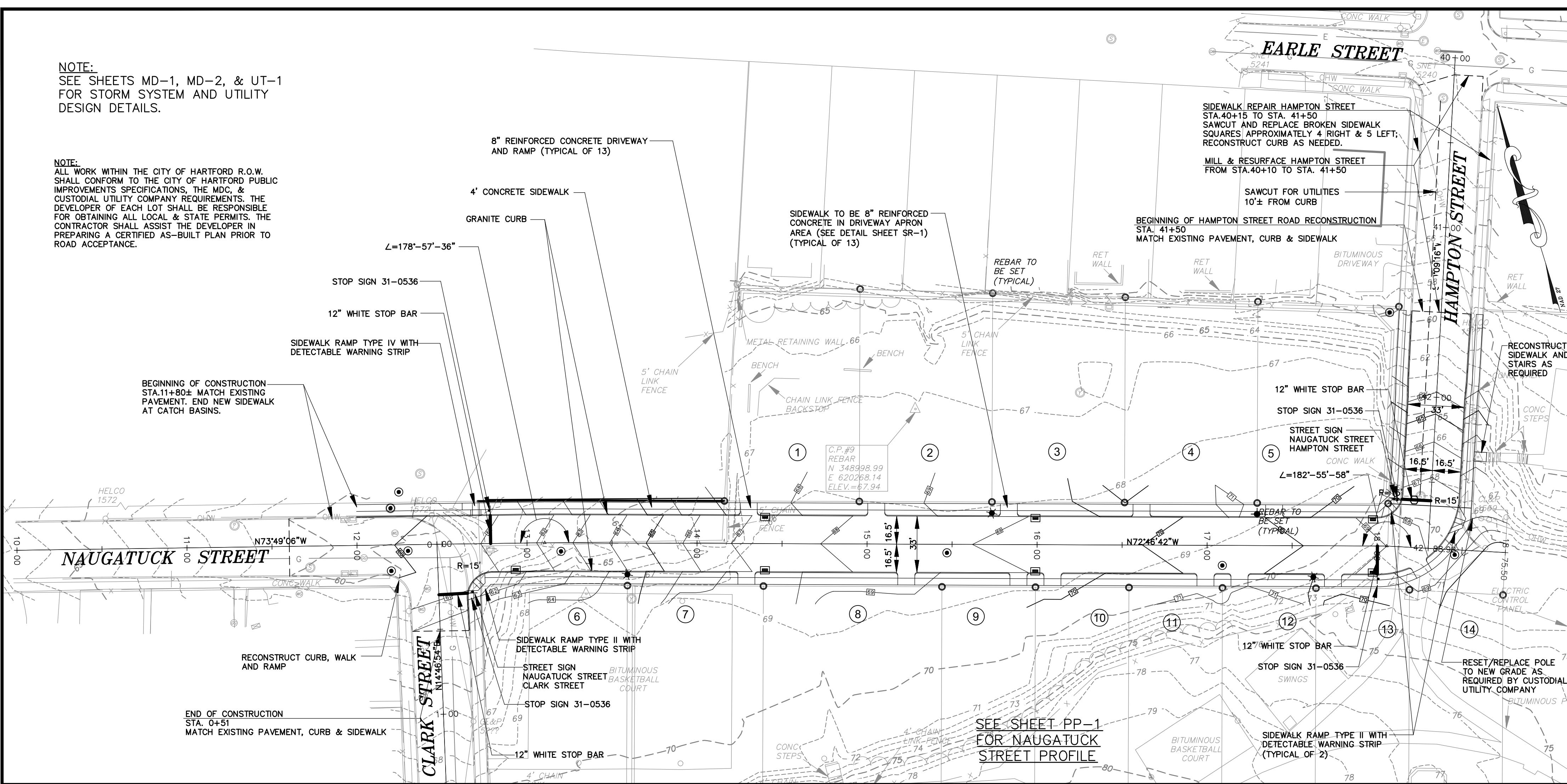


NOTE:
SEE SHEETS MD-1, MD-2, & UT-1
FOR STORM SYSTEM AND UTILITY
DESIGN DETAILS.

NOTE:
ALL WORK WITHIN THE CITY OF HARTFORD R.O.W.
SHALL CONFORM TO THE CITY OF HARTFORD PUBLIC
IMPROVEMENTS SPECIFICATIONS, THE MDC, &
CUSTODIAL UTILITY COMPANY REQUIREMENTS. THE
DEVELOPER OF EACH LOT SHALL BE RESPONSIBLE
FOR OBTAINING ALL LOCAL & STATE PERMITS. THE
CONTRACTOR SHALL ASSIST THE DEVELOPER IN
PREPARING A CERTIFIED AS-BUILT PLAN PRIOR TO
ROAD ACCEPTANCE.



LEGEND
(SYMBOLS NOT TO SCALE)

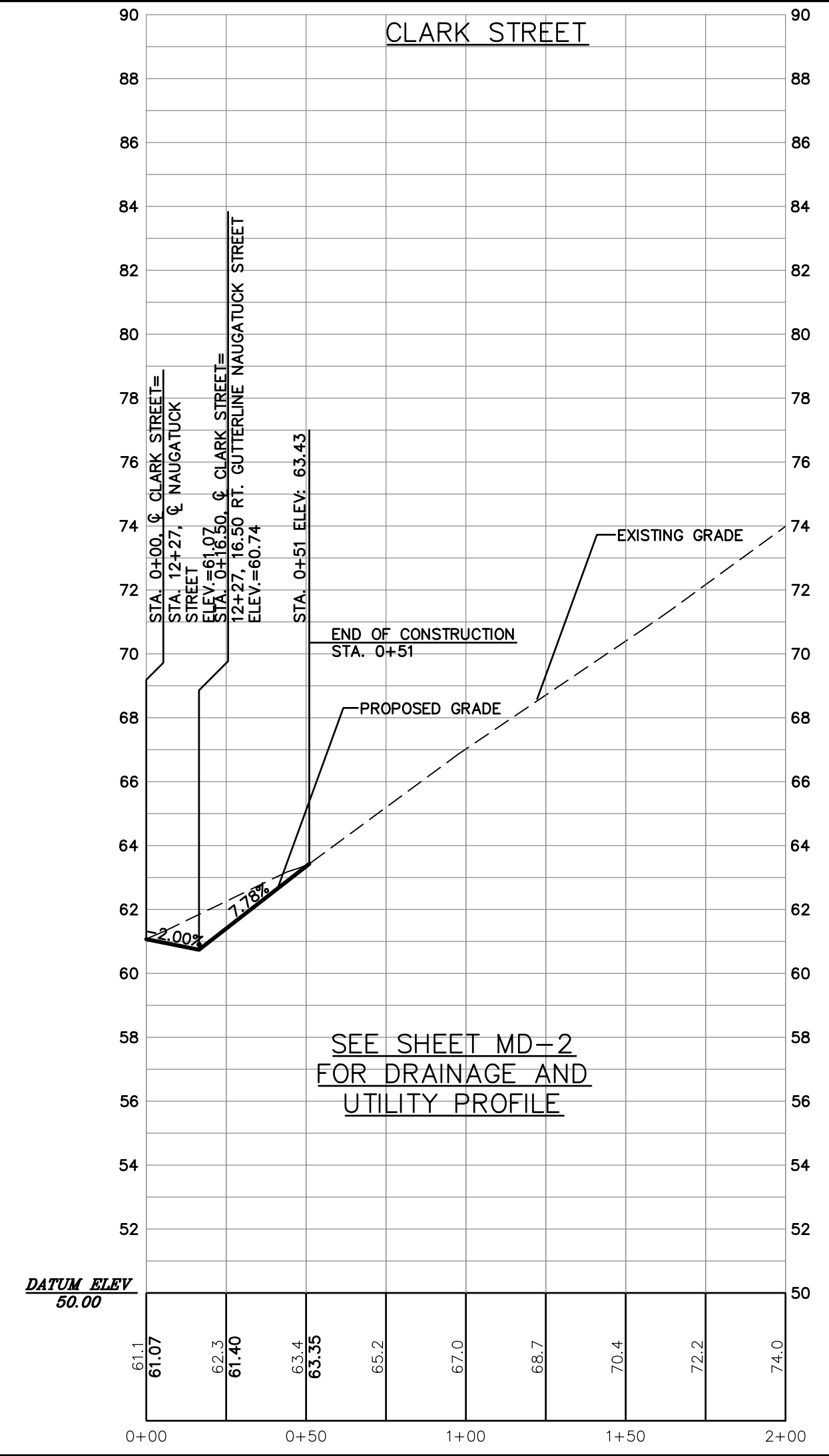
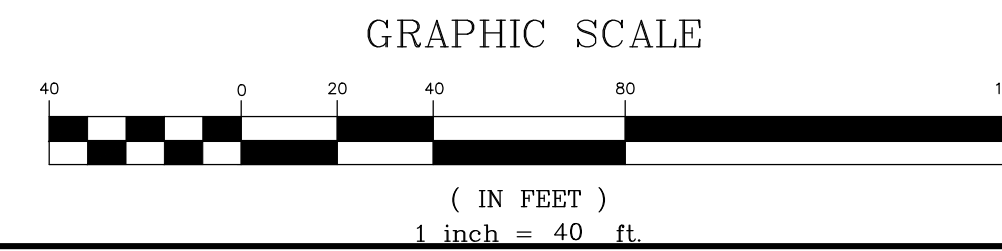
- = CATCH BASIN
- ⊙ = SANITARY MANHOLE
- ⊕ = PROPOSED DRAINAGE MANHOLE
- ⊖ = DRAINAGE MANHOLE
- ⊗ = PROPOSED WATER GATE VALVE
- ⊘ = WATER MANHOLE
- ⊙ = PROPOSED HYDRANT
- ⊕ = PROPOSED STORM DRAINAGE
- ⊖ = PROPOSED SANITARY SEWER
- ⊗ = PROPOSED GAS LINE
- ⊘ = PROPOSED WATER LINE
- ⊙ = PROPOSED ELECTRIC LINE
- ⊖ = PROPOSED TELEPHONE LINE
- ⊗ = PROPOSED CABLE TELEVISION LINE
- ⊘ = PROPOSED LIGHT STANDARD

PROPOSED LEGEND

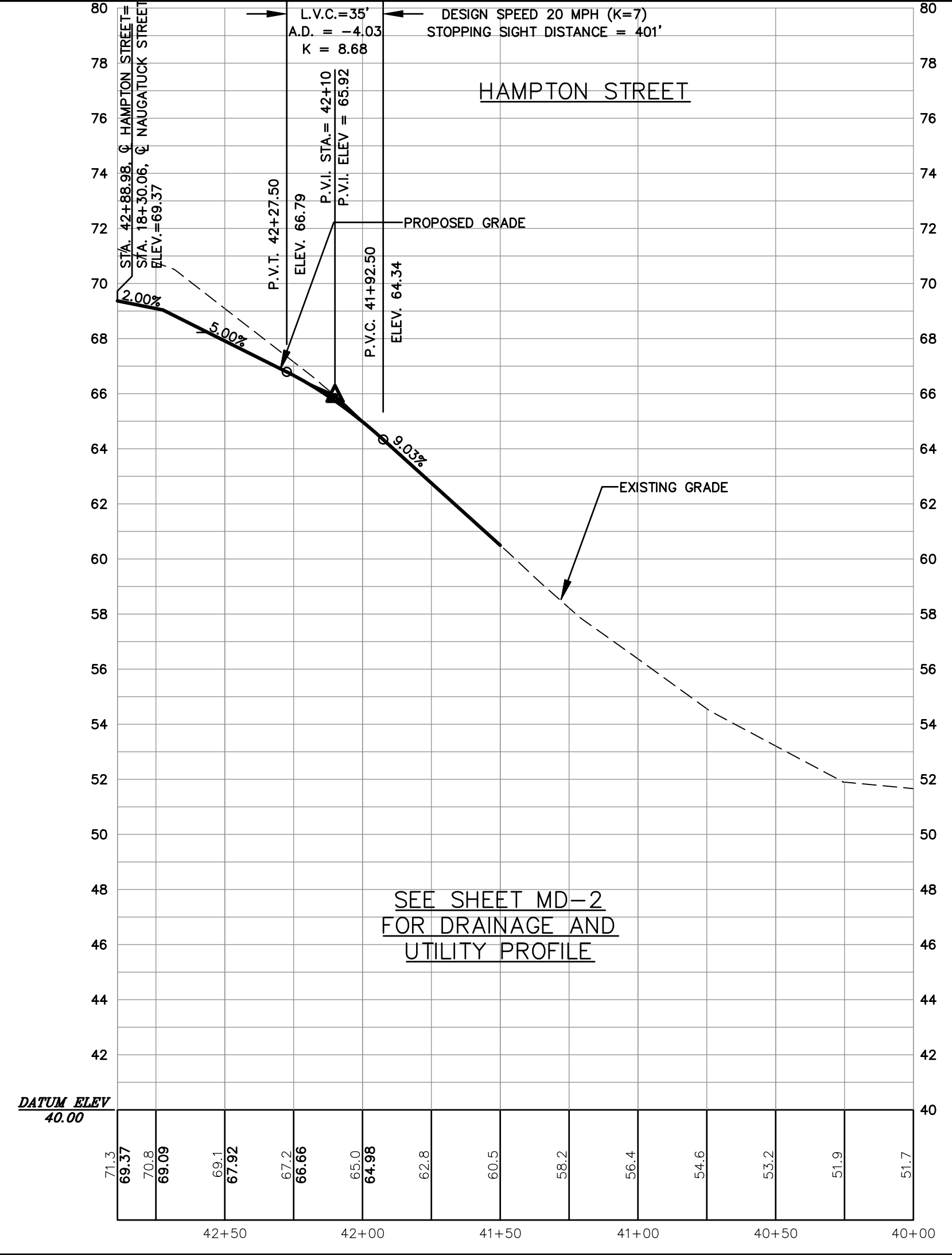
- ⊙ = PROPOSED CATCH BASIN
- ⊕ = PROPOSED SANITARY MANHOLE
- ⊖ = PROPOSED DRAINAGE MANHOLE
- ⊗ = PROPOSED WATER GATE VALVE
- ⊘ = PROPOSED HYDRANT
- ⊙ = PROPOSED STORM DRAINAGE
- ⊖ = PROPOSED SANITARY SEWER
- ⊗ = PROPOSED GAS LINE
- ⊘ = PROPOSED WATER LINE
- ⊙ = PROPOSED ELECTRIC LINE
- ⊖ = PROPOSED TELEPHONE LINE
- ⊗ = PROPOSED CABLE TELEVISION LINE
- ⊘ = PROPOSED LIGHT STANDARD

BEARINGS AND COORDINATES DEPICTED HEREON
REFER TO THE 1927 NORTH AMERICAN DATUM
(NAD 27). MDC MON #77184 N = 348,434.23
AND E = 621,305.12 & MDC MON # 77185 U
= 347,910.62 AND E = 620,917.27 WERE USED
FOR REFERENCE.

ELEVATIONS DEPICTED HEREON REFER TO THE
1988 NORTH AMERICAN VERTICAL DATUM
(NAVD88) BASED ON GPS RAPID STATIC
OBSERVATIONS TAKEN ON JULY 20, 2017 AND
OPUS PROCESSING RESULTS ON HARTFORD MDC
STATION #HH-115 ELEVATION = 78.73.



SCALE
HORIZ.: 1" = 40'
VERT.: 1" = 4'



Revisions:

No.	Date	Description
1	05-31-06	City Comments
2	03-13-08	City Comments
3	04-03-08	City Comments
4	05-09-08	City Comments
5	01-26-18	City Comments
6	10-16-18	Roadway Bid Set
7	11-13-18	Addendum #2

PLAN AND PROFILE
CLARK STREET & HAMPTON STREET
PREPARED FOR
CRDA/TORRAL DEVELOPMENT LLC
NAUGATUCK STREET EXTENSION
HARTFORD, CONNECTICUT

Date: 05-19-06
Drawn by: CAD
Job no: 04193

Checked by: DSZ
Sheet no: 2 OF 2

Scale: 1" = 40'

Nov. 13, 2018

PP-2

FAH
F. A. Hesketh & Associates, Inc.
6 Creamery Brook, East Granby, CT 06026
Civil & Traffic Engineers • Surveyors • Landscape Architects

Phone (860) 653-8000
Fax (860) 644-8600
e-mail: fah@fahsketh.com