



CAPITAL REGION DEVELOPMENT AUTHORITY



SCIA ARCHITECTS 14 Duncan Street 4th Floor Toronto, Ontario, CA M5H 3G8

Severud Associates CONSULTING ENGINEERS P.C. Tel (212) 986 3700 Fax (212) 687 6467

meengineers CONSULTING ENGINEERS Tel (310) 842 8700 Fax (310) 842 7700

Table with 2 columns: Description, Date. Includes 'ISSUED FOR BID' and '2020-01-09'.

REVISIONS/ISSUES

CONTRACTOR SHALL CHECK AND VERIFY ALL DIMENSIONS AND REPORT ANY OMISSIONS OR DISCREPANCIES TO THE ARCHITECT BEFORE PROCEEDING WITH THE WORK. DO NOT SCALE THE DRAWINGS

SEAL

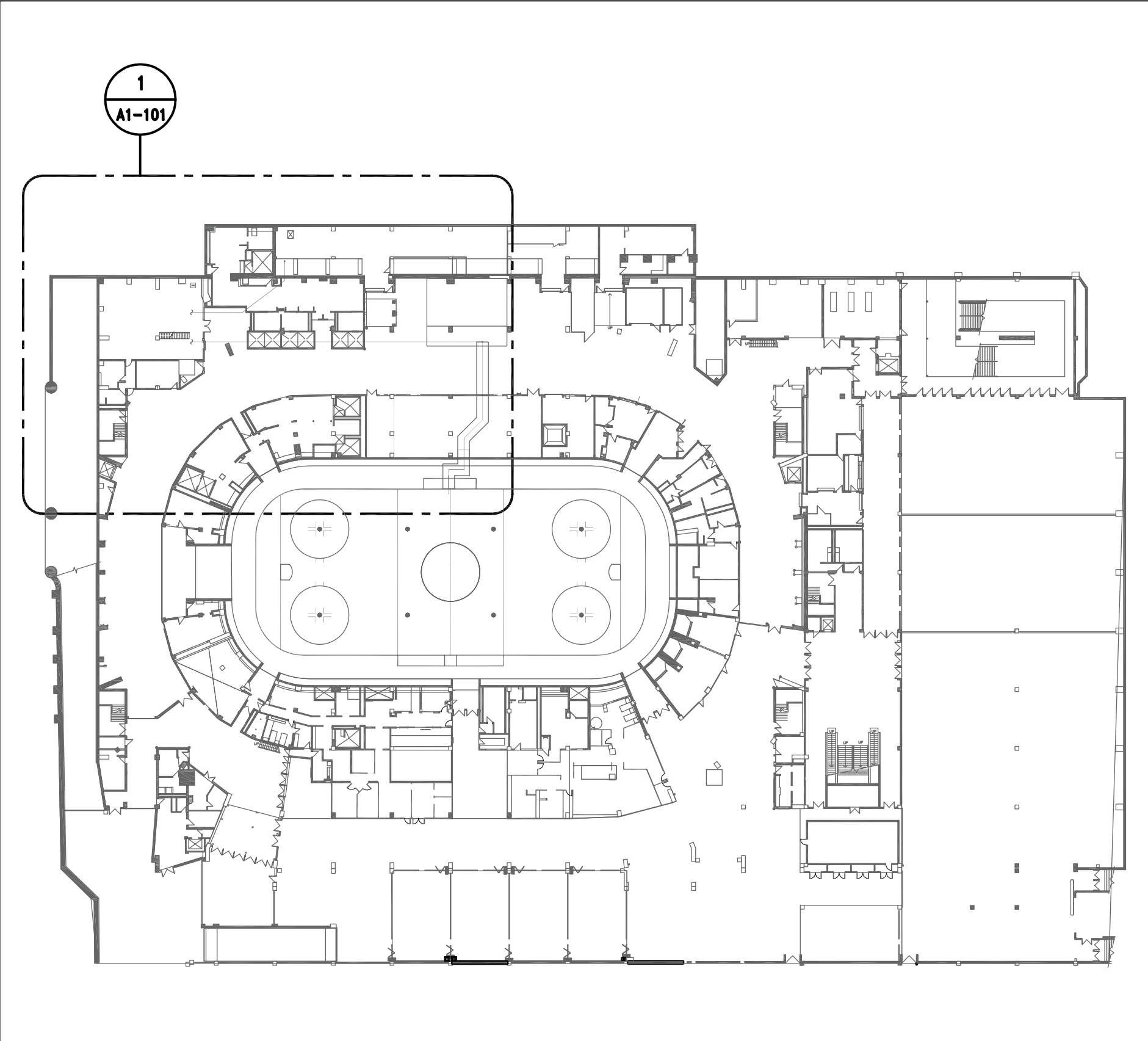
Table with 2 columns: Description, Date. Includes 'DRAWN SL + TG', 'CHECKED LL', 'DATE PLOTTED 21 FEB 2019'.

XL CENTER 1 CIVIC CENTER PLAZA HARTFORD, CT

CHILLER PLANT RELOCATION

GENERAL NOTES, WALL TYPES

SCALE AS NOTED PROJ. NO. 1605-05-3 DWG. No. A0-101



KEY PLAN - EVENT LEVEL 31 1" = 60' - 0"

DEMOLITION NOTES
1. DEMOLITION NOTES ARE BASED ON FIELD OBSERVATIONS...
2. THE DEMOLITION DRAWINGS INDICATE THE GENERAL SCOPE AND MAJOR ASPECTS OF DEMOLITION WORK REQUIRED...
3. THE CONTRACTOR SHALL COORDINATE ALL DOCUMENTS PREPARED FOR THIS DEMOLITION SET WITH THE CONSTRUCTION DOCUMENTS PREPARED FOR THE NEW CONSTRUCTION DOCUMENTS PRIOR TO COMMENCING WORK...

BUILDING DEPARTMENT NOTES
1. ALL WORK SHALL CONFORM WITH THE REQUIREMENTS OF ALL APPLICABLE CODES, ORDINANCES, SAFETY REGULATIONS AND OTHER DIRECTIVES.
2. 2013 NFPA 10 - PORTABLE FIRE EXTINGUISHERS
2013 NFPA 13 - INSTALLATION OF SPRINKLER SYSTEMS
2013 NFPA 14 - INSTALLATION OF STANDPIPES AND HOSE SYSTEMS...

WALL ASSEMBLIES
GENERAL NOTES
- ALL PARTITIONS SHALL BE CONSTRUCTED TO UNDERSIDE OF ROOF DECK UNLESS NOTED OTHERWISE...
- ALL RESTROOMS, WET AREAS, AND SHOWER ROOMS TO BE WATER RESISTANT GYPSUM WALL BOARD...
- ALL CONCRETE MASONRY UNIT WALLS TO HAVE RODDED JOINTS...

SYMBOLS
BUILDING SECTION DETAIL NUMBER
PARTIAL BUILDING SECTION DETAIL NUMBER
PARTIAL SECTION DETAIL NUMBER
DETAIL DETAIL NUMBER
MULTIPLE INTERIOR ELEVATIONS DETAIL NUMBER...

DOOR SCHEDULE
LEVEL FROM ROOM TO ROOM DOOR NO. TYPE HEIGHT WIDTH FRAME COMMENTS
EVENT MECHANICAL NORTH STAGING AREA 1112 HM 7'-0" 6'-0" HM DOUBLE DOOR - SMOKE SEAL

ROOF AND CEILING ASSEMBLIES
GENERAL NOTES
REFER TO REFLECTED CEILING PLANS, MATERIAL SCHEDULE & PROJECT SPECIFICATIONS FOR INFORMATION REGARDING CEILING TYPES.
ALL RESTROOMS, WET AREAS AND SHOWER ROOMS TO BE WATER RESISTANT GYPSUM BOARD.

Filename: K:\1605-05-3_Hartford_Chiller_00_02_Working\Drawings\00_CAD_02_Working\SHEETS\A0-101_COVER.dwg



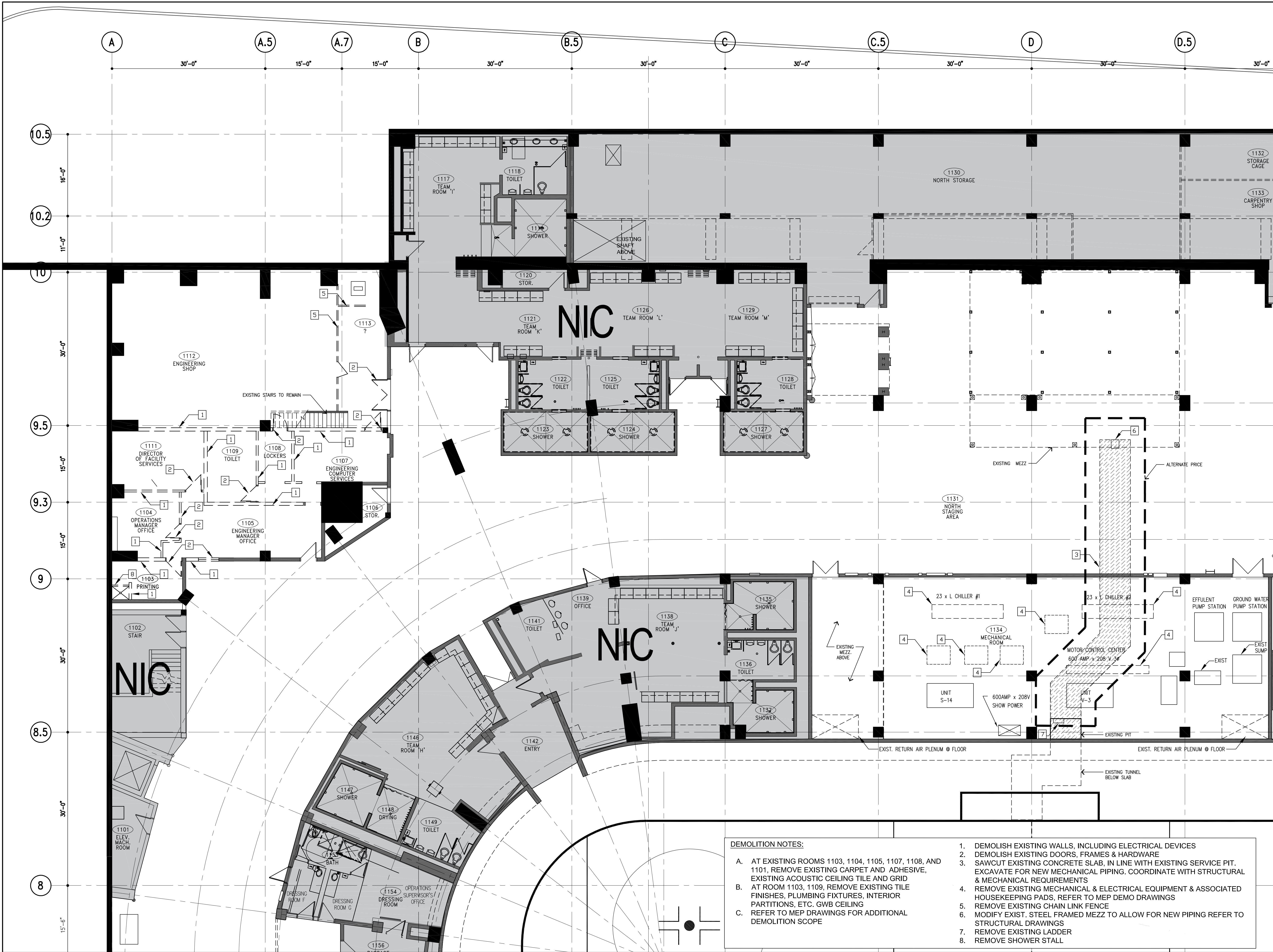
CAPITAL REGION DEVELOPMENT AUTHORITY

BRISBIN
BOOK
BETTON
ARCHITECTS

14 Duncan Street 4th Floor
Toronto, Ontario, CA M5H 3G8
Tel (416) 591 8999 Fax (416) 591 9087

Severud Associates
CONSULTING ENGINEERS P.C.
Tel (212) 986 3700 Fax (212) 687 6467

meengineers
CONSULTING ENGINEERS
Tel (310) 842 8700 Fax (310) 842 7700

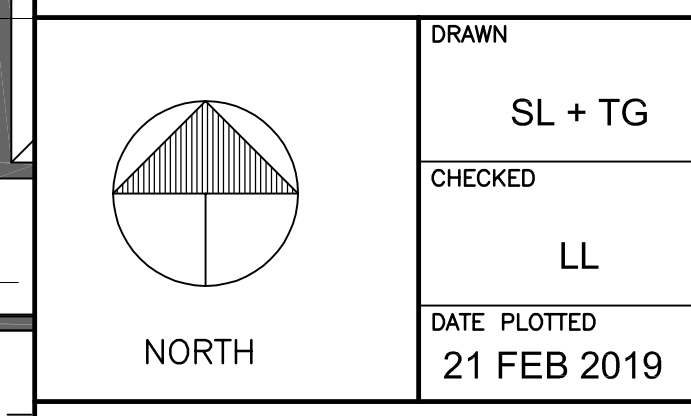


| | | |
|---|----------------|------------|
| 1 | ISSUED FOR BID | 2020-01-09 |
| | DESCRIPTION | DATE |

REVISIONS/ISSUES

CONTRACTOR SHALL CHECK AND VERIFY ALL DIMENSIONS AND REPORT ANY OMISSIONS OR DISCREPANCIES TO THE ARCHITECT BEFORE PROCEEDING WITH THE WORK. DO NOT SCALE THE DRAWINGS

| | |
|--------------|-------------|
| SEAL | |
| DRAWN | SL + TG |
| CHECKED | LL |
| DATE PLOTTED | 21 FEB 2019 |



XL CENTER
1 CIVIC CENTER PLAZA
HARTFORD, CT
**CHILLER PLANT
RELOCATION**

DWG. TITLE
**EVENT LEVEL - LV 31
DEMOLITION PLAN**

| | | | |
|-----------|--------------|----------|--------|
| SCALE | 1/8" = 1'-0" | DWG. No. | A1-101 |
| PROJ. No. | 1605.05-3 | | |

- DEMOLITION NOTES:**
- AT EXISTING ROOMS 1103, 1104, 1105, 1107, 1108, AND 1101, REMOVE EXISTING CARPET AND ADHESIVE, EXISTING ACOUSTIC CEILING TILE AND GRID
 - AT ROOM 1103, 1109, REMOVE EXISTING TILE FINISHES, PLUMBING FIXTURES, INTERIOR PARTITIONS, ETC. GWB CEILING
 - REFER TO MEP DRAWINGS FOR ADDITIONAL DEMOLITION SCOPE
- DEMOLISH EXISTING WALLS, INCLUDING ELECTRICAL DEVICES
 - DEMOLISH EXISTING DOORS, FRAMES & HARDWARE
 - SAWCUT EXISTING CONCRETE SLAB, IN LINE WITH EXISTING SERVICE PIT. EXCAVATE FOR NEW MECHANICAL PIPING. COORDINATE WITH STRUCTURAL & MECHANICAL REQUIREMENTS
 - REMOVE EXISTING MECHANICAL & ELECTRICAL EQUIPMENT & ASSOCIATED HOUSEKEEPING PADS, REFER TO MEP DEMO DRAWINGS
 - REMOVE EXISTING CHAIN LINK FENCE
 - MODIFY EXIST. STEEL FRAMED MEZZ TO ALLOW FOR NEW PIPING REFER TO STRUCTURAL DRAWINGS
 - REMOVE EXISTING LADDER
 - REMOVE SHOWER STALL

PLTDATE: 09 Jan '20 - 5:17pm
FILENAME: K:\1605.05-3 Hartford Chiller\00_0 Drawings\00_CAD\02_Working\SHEETS\A1-101 DEMO.dwg
XREFS:



XL CENTER

CAPITAL REGION DEVELOPMENT AUTHORITY

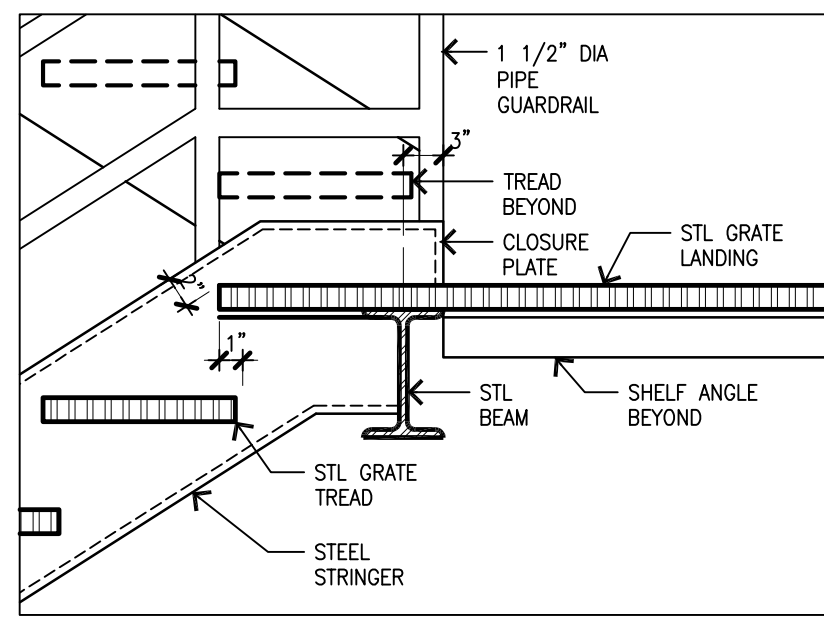
BRISBROOK BEYON ARCHITECTS
S C I ARCHITECTS

14 Duncan Street 4th Floor
Toronto, Ontario, CA M5H 3G8
Tel (416) 591 8999 Fax (416) 591 9087

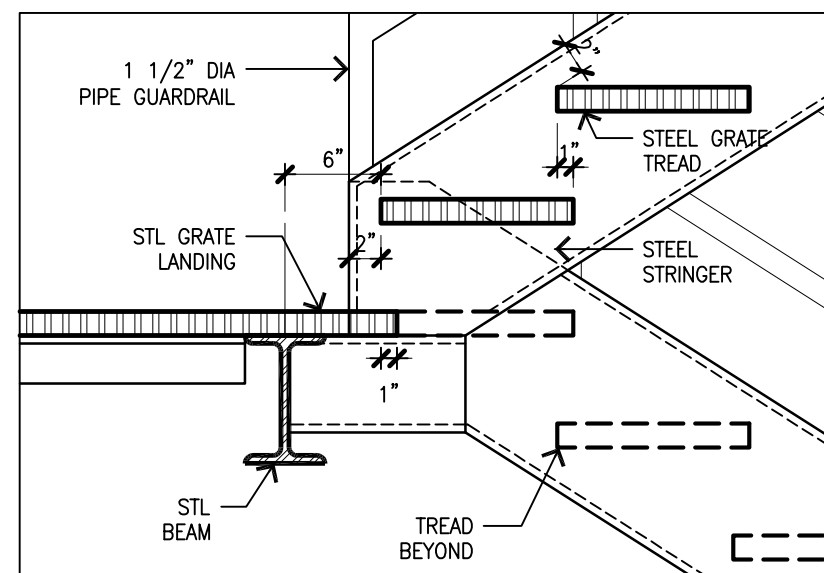
Severud Associates
CONSULTING ENGINEERS P.C.
Tel (212) 986 3700 Fax (212) 687 6467

meengineers
CONSULTING ENGINEERS
Tel (310) 842 8700 Fax (310) 842 7700

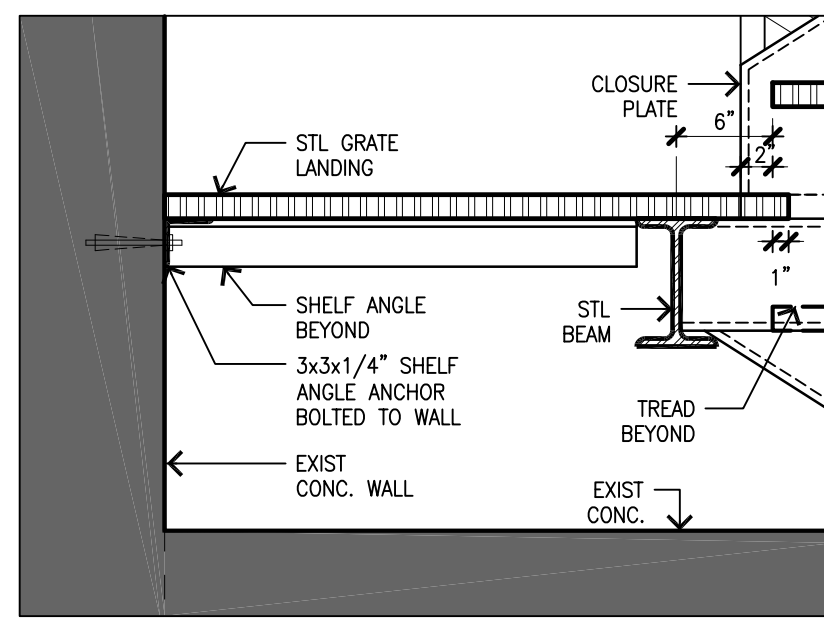
NOTE:
ALL STAIR COMPONENTS SHALL BE GALVANIZED
ie. STRINGERS, TREADS, POSTS, LANDINGS, RAILINGS ETC.



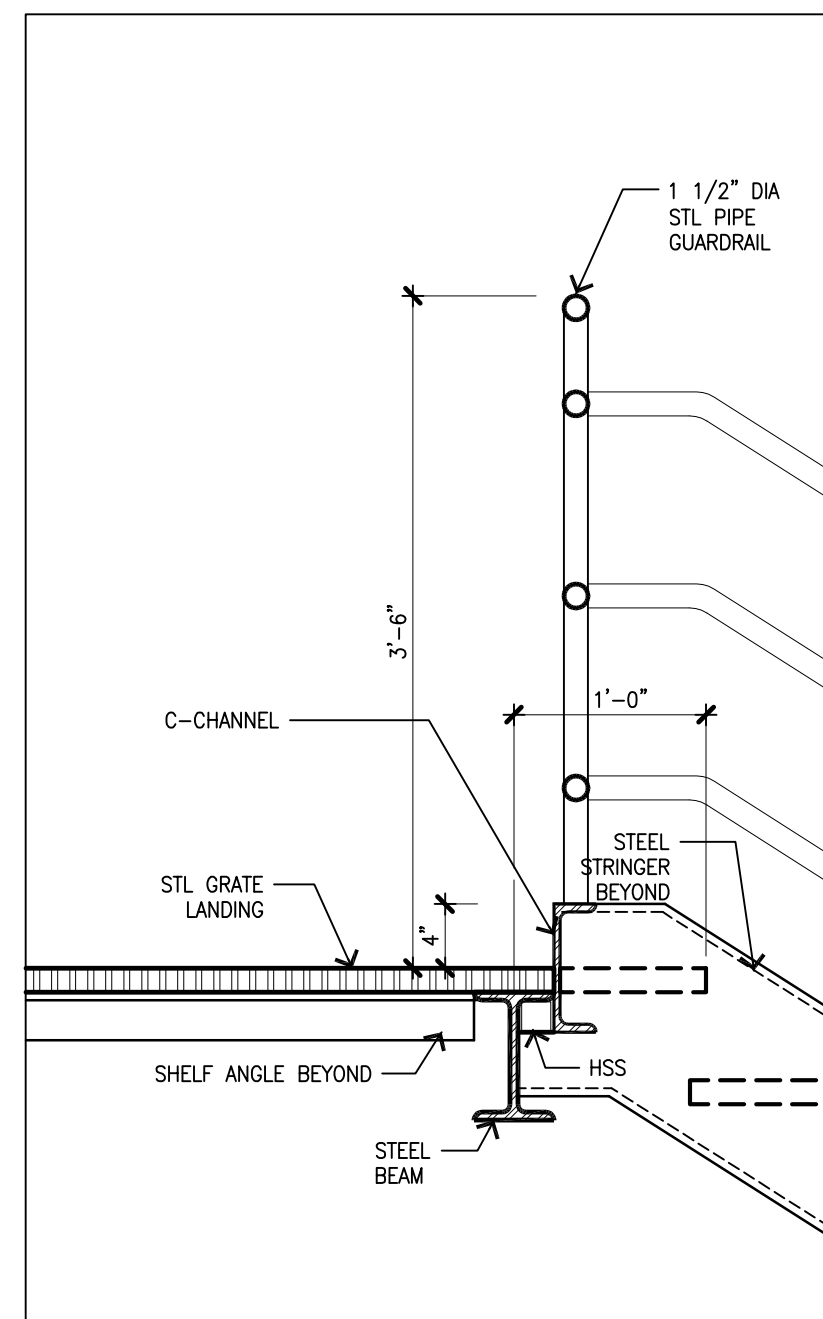
9 STAIR DETAIL
1" = 1'-0"



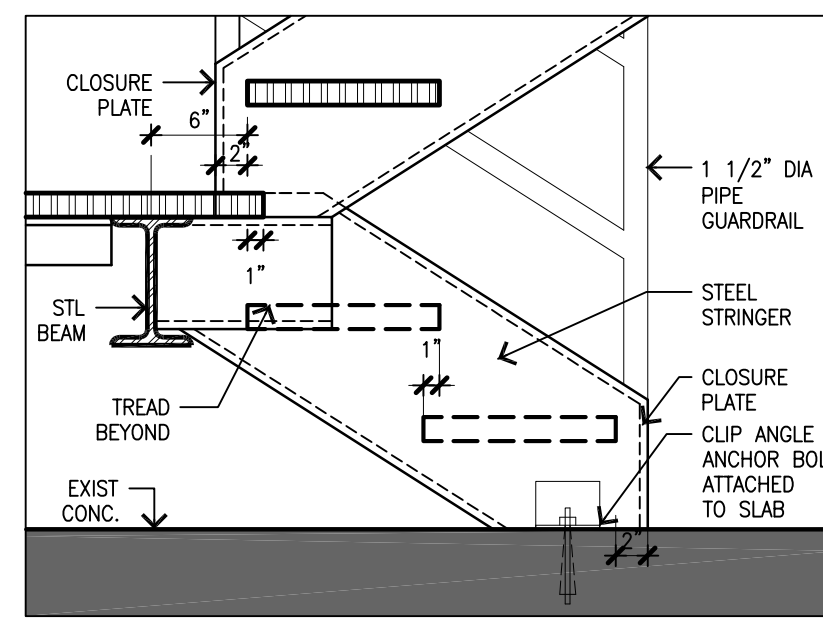
8 STAIR DETAIL
1" = 1'-0"



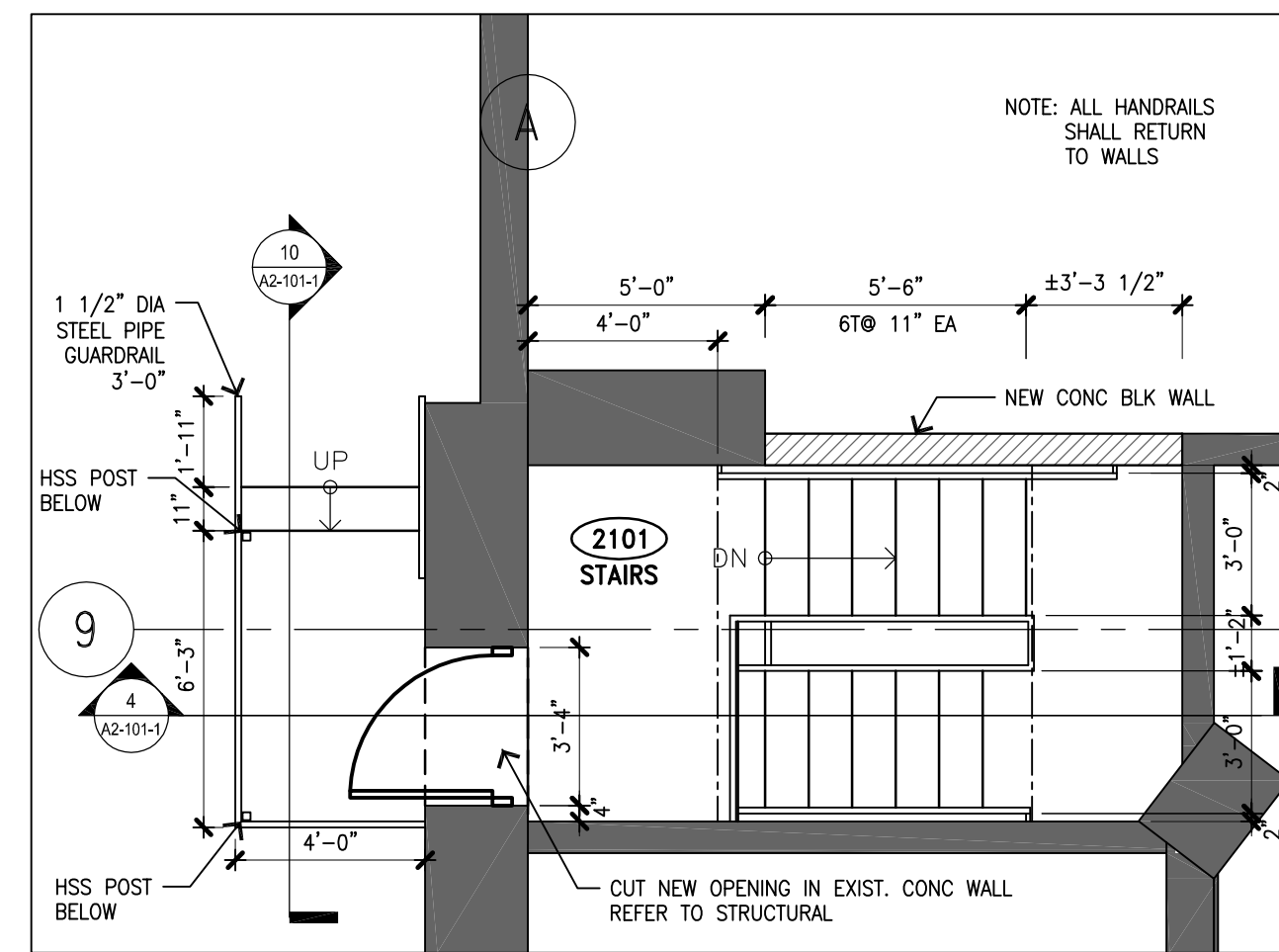
7 STAIR DETAIL
1" = 1'-0"



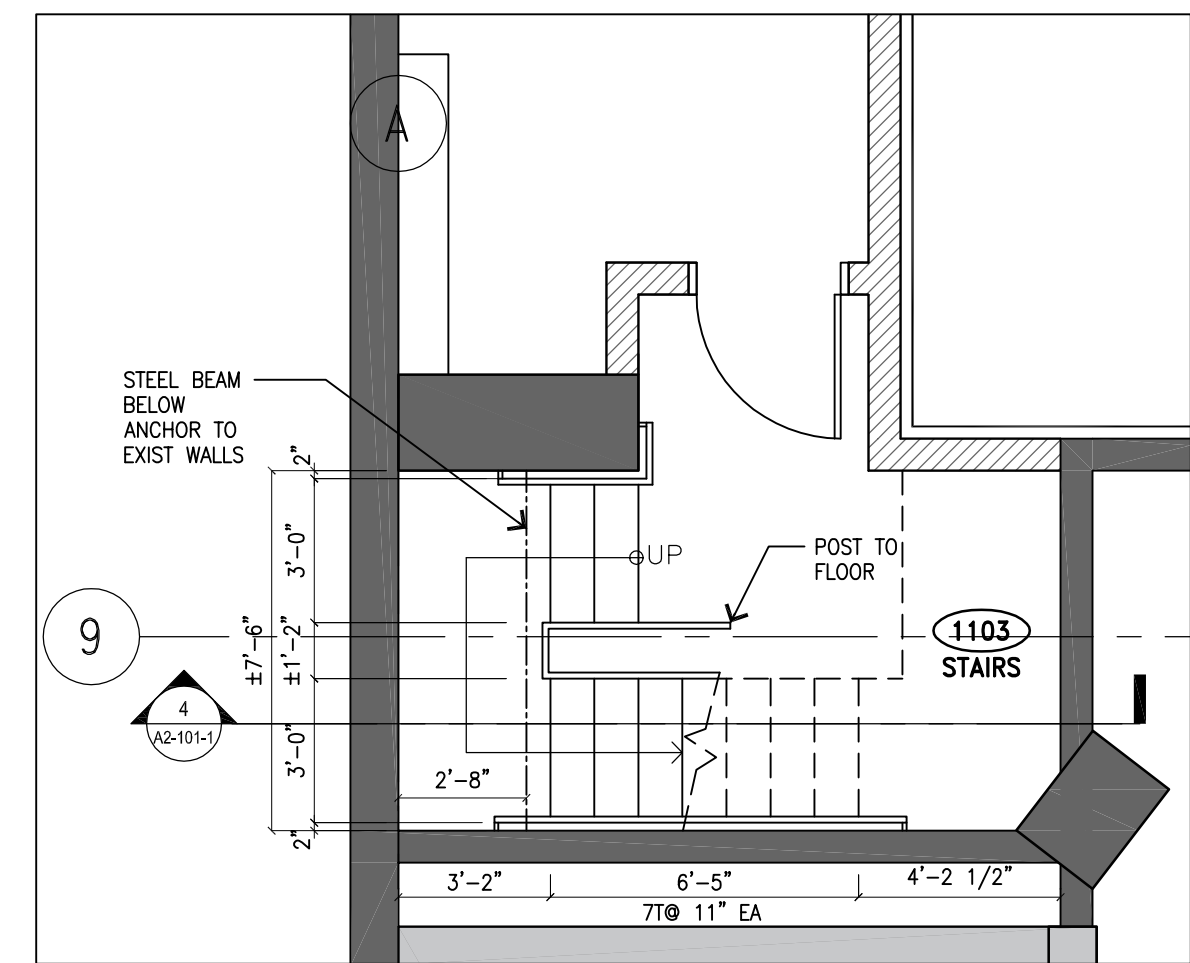
6 STAIR DETAIL
1" = 1'-0"



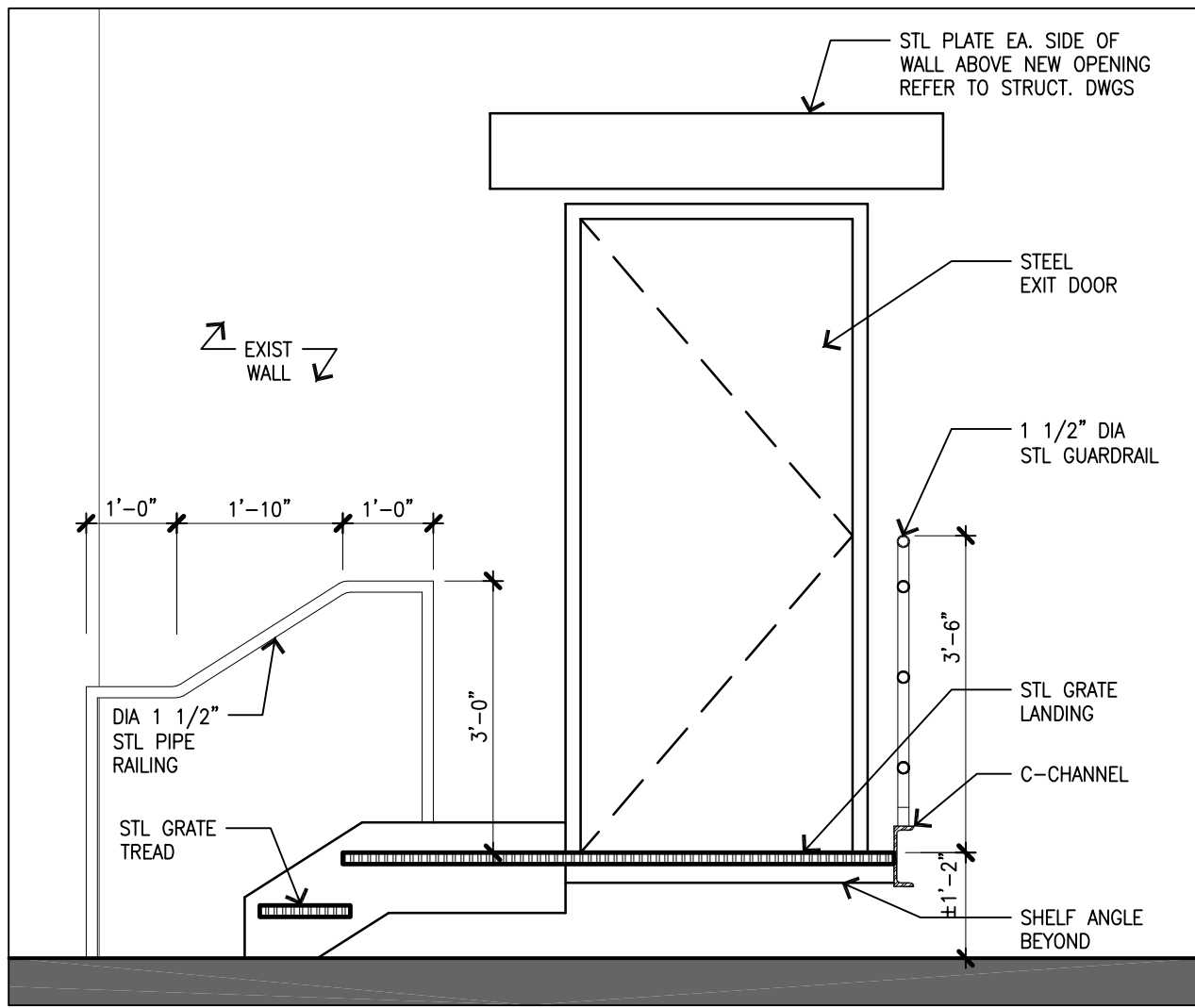
5 STAIR DETAIL
1" = 1'-0"



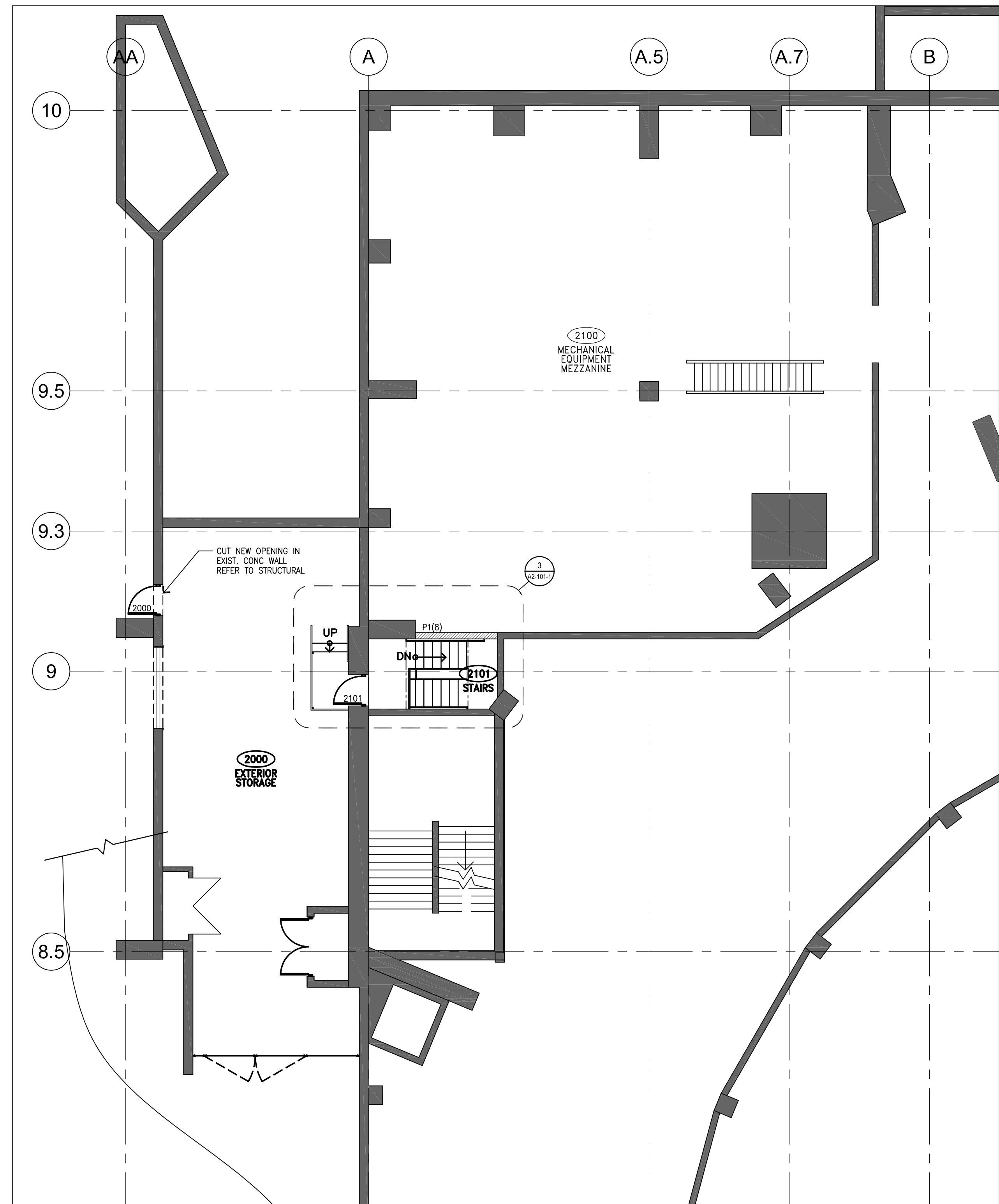
3 STAIR PLAN - LEVEL 48'-6"
1/4" = 1'-0"



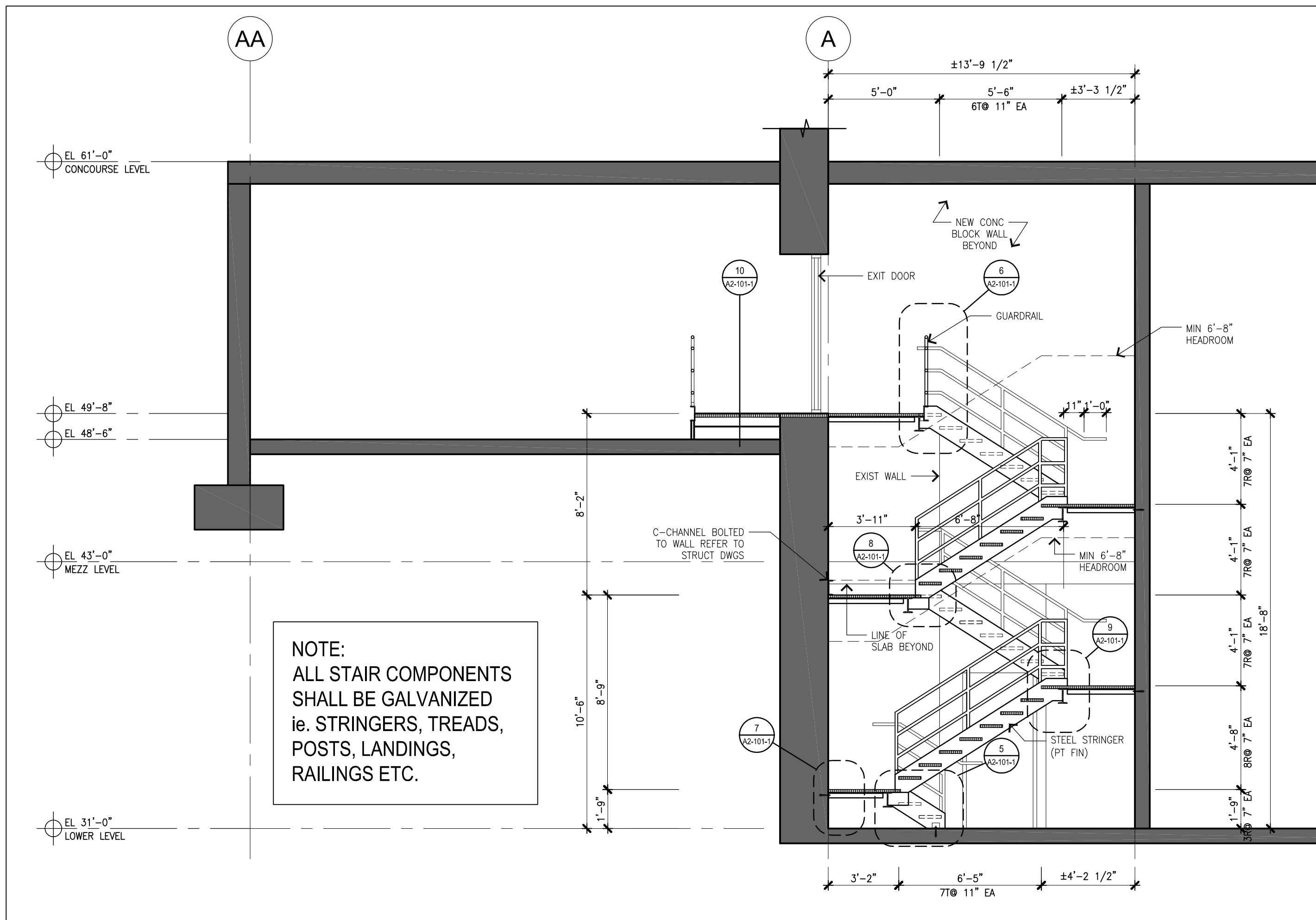
2 STAIR PLAN - LEVEL 31
1/4" = 1'-0"



10 EXIT SECTION
1/2" = 1'-0"



1 MEZZANINE PLAN - LEVEL 48
1/8" = 1'-0"



4 SECTION THROUGH EVENT TO CONCOURSE LEVEL
1/4" = 1'-0"

NOTE:
ALL STAIR COMPONENTS
SHALL BE GALVANIZED
ie. STRINGERS, TREADS,
POSTS, LANDINGS,
RAILINGS ETC.

| | | |
|---|----------------|------------|
| 1 | ISSUED FOR BID | 2020-01-09 |
| | DESCRIPTION | DATE |

REVISIONS/ISSUES

CONTRACTOR SHALL CHECK AND VERIFY ALL DIMENSIONS AND REPORT ANY OMISSIONS OR DISCREPANCIES TO THE ARCHITECT BEFORE PROCEEDING WITH THE WORK. DO NOT SCALE THE DRAWINGS

| | |
|------|--|
| SEAL | |
| | |
| | |
| | |

| | |
|------------------|-----------------------------|
| DRAWN SL + TG | CHECKED LL |
| | DATE PLOTTED 21 FEB 2019 |

XL CENTER
1 CIVIC CENTER PLAZA
HARTFORD, CT

CHILLER PLANT
RELOCATION

DWG. TITLE
MEZZANINE PLAN
LEVEL 48 &
STAIR DETAILS

| | |
|------------------------|----------------------|
| SCALE AS NOTED | DWG. No. A2-101-1 |
| PROJ. NO. 1605.05-3 | |

PLOTDATE: 09 Jun '20 - 5:28pm
FILENAME: K:\1605.05-3 Hartford Chiller\00_CAD\02_Working\SHEETS\A2-101-1 MEZZ PLAN.dwg
XREFS:



CAPITAL REGION DEVELOPMENT AUTHORITY

BRISBIN
BOOK
BETTON
ARCHITECTS

14 Duncan Street 4th Floor
Toronto, Ontario, CA M5H 3G8
Tel (416) 591 8999 Fax (416) 591 9087

Severud Associates
CONSULTING ENGINEERS P.C.
Tel (212) 986 3700 Fax (212) 687 6467

meengineers
CONSULTING ENGINEERS
Tel (310) 842 8700 Fax (310) 842 7700

| | | |
|---|----------------|------------|
| 1 | ISSUED FOR BID | 2020-01-09 |
| | DESCRIPTION | DATE |

REVISIONS/ISSUES

CONTRACTOR SHALL CHECK AND VERIFY ALL DIMENSIONS AND REPORT ANY OMISSIONS OR DISCREPANCIES TO THE ARCHITECT BEFORE PROCEEDING WITH THE WORK. DO NOT SCALE THE DRAWINGS

SEAL

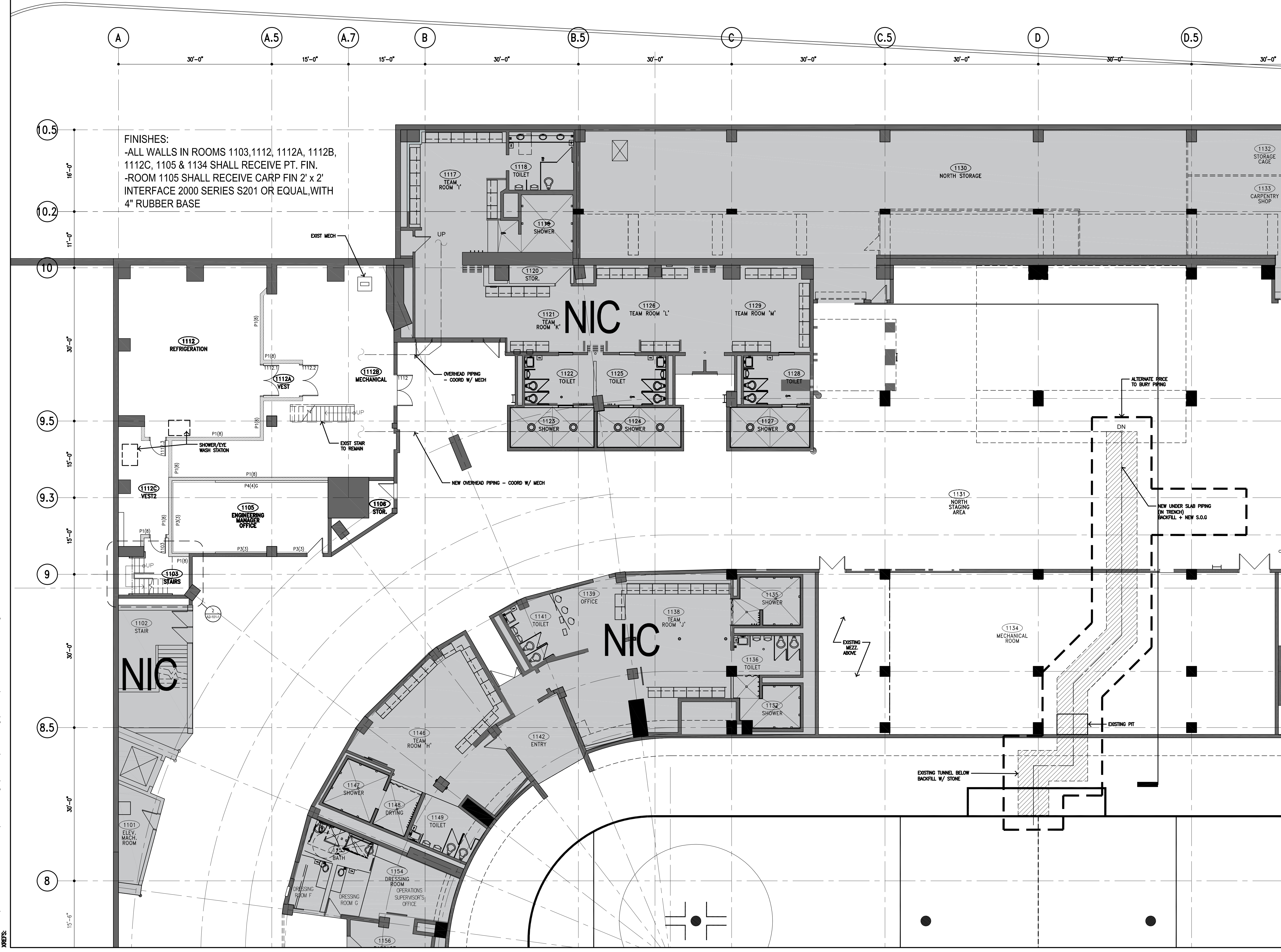
| | |
|--------------|-------------|
| DRAWN | SL + TG |
| CHECKED | LL |
| DATE PLOTTED | 21 FEB 2019 |

XL CENTER
1 CIVIC CENTER PLAZA
HARTFORD, CT

**CHILLER PLANT
RELOCATION**

DWG. TITLE
EVENT LEVEL PLAN
LEVEL 31

| | | | |
|-----------|--------------|----------|--------|
| SCALE | 1/8" = 1'-0" | DWG. No. | A2-101 |
| PROJ. NO. | 1605.05-3 | | |



FINISHES:
 -ALL WALLS IN ROOMS 1103, 1112, 1112A, 1112B, 1112C, 1105 & 1134 SHALL RECEIVE PT. FIN.
 -ROOM 1105 SHALL RECEIVE CARP FIN 2' x 2' INTERFACE 2000 SERIES S201 OR EQUAL, WITH 4" RUBBER BASE

PLOTDATE: 09 Jan '20 - 5:19pm
 FILENAME: K:\1605.05-3 Hartford Chiller\00.0 Drawings\00_CAD\02_Working\SHEETS\A2-101_EVENT_PLAN.dwg
 XREFS:



XL CENTER

CAPITAL REGION DEVELOPMENT AUTHORITY

**BRISBROOK
BEYON
ARCHITECTS**

S C I ARCHITECTS
14 Duncan Street 4th Floor
Toronto, Ontario, CA M5H 3G8
Tel (416) 591 8999 Fax (416) 591 9087

Severud Associates
CONSULTING ENGINEERS P.C.
Tel (212) 986 3700 Fax (212) 687 6467

meengineers
CONSULTING ENGINEERS
Tel (310) 842 8700 Fax (310) 842 7700

| | | |
|---|----------------|------------|
| 1 | ISSUED FOR BID | 2020-01-09 |
| | DESCRIPTION | DATE |

REVISIONS/ISSUES

CONTRACTOR SHALL CHECK AND VERIFY ALL DIMENSIONS AND REPORT ANY OMISSIONS OR DISCREPANCIES TO THE ARCHITECT BEFORE PROCEEDING WITH THE WORK. DO NOT SCALE THE DRAWINGS.

SEAL

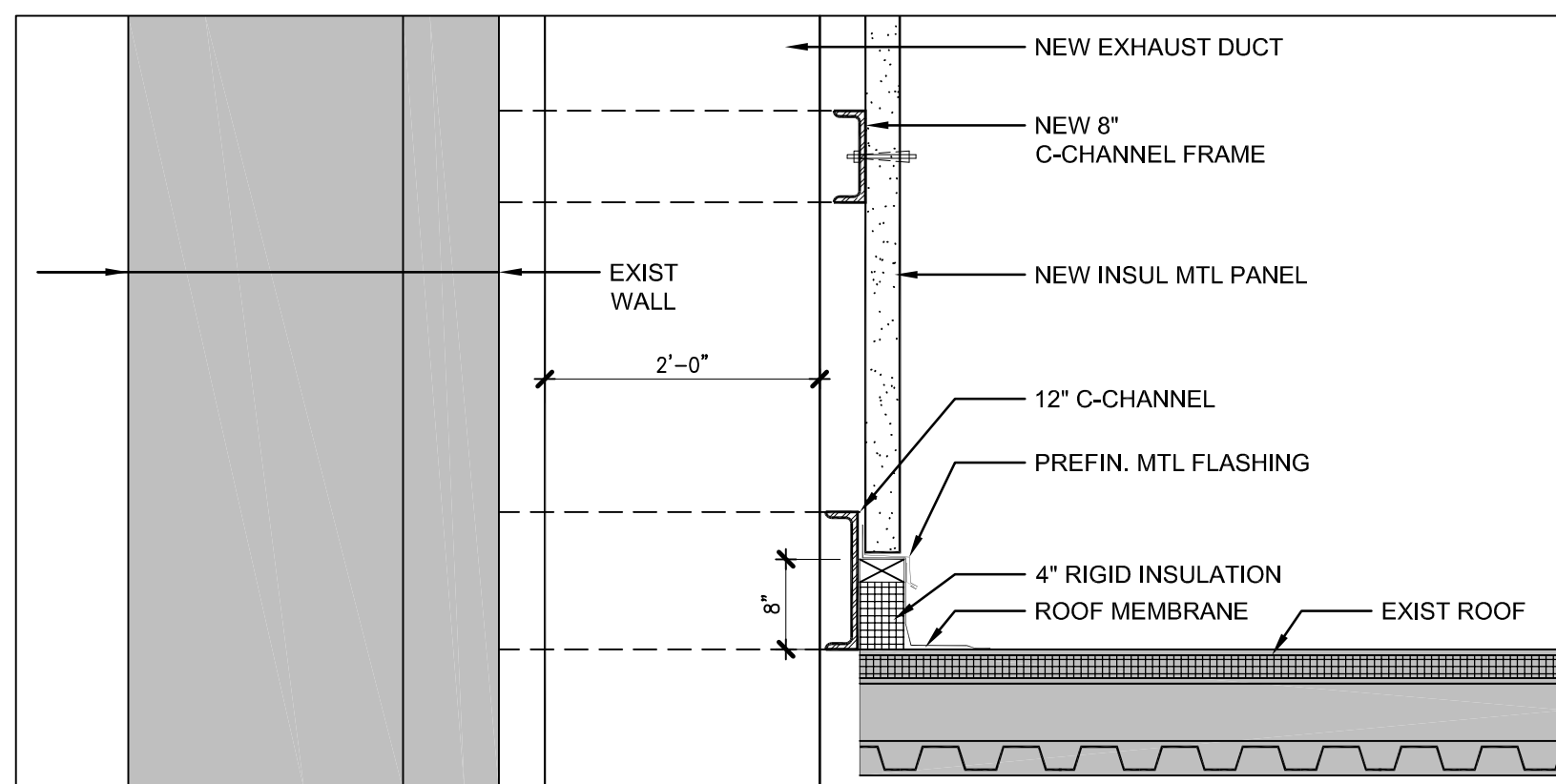
| | |
|--------------|-------------|
| DRAWN | SL + TG |
| CHECKED | LL |
| DATE PLOTTED | 21 FEB 2019 |

XL CENTER
1 CIVIC CENTER PLAZA
HARTFORD, CT

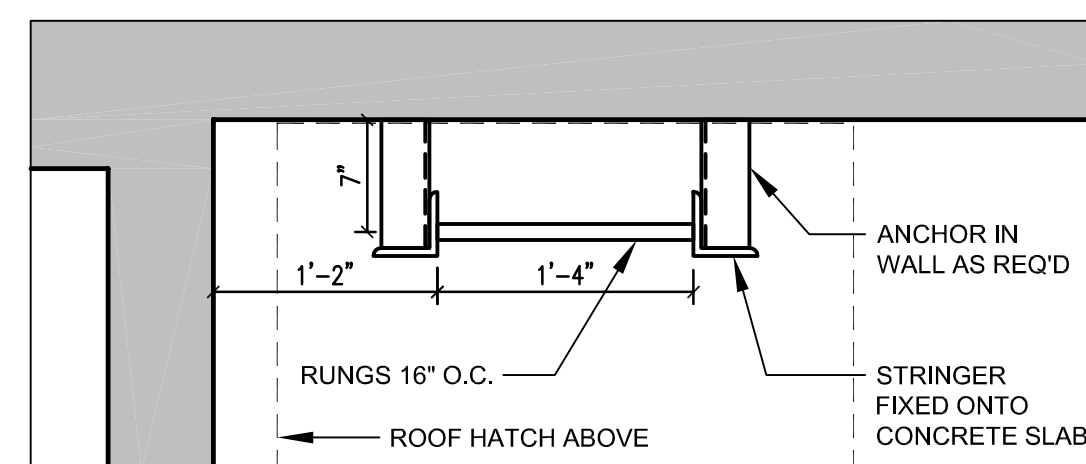
**CHILLER PLANT
RELOCATION**

DWG. TITLE
**PIPE ROUTING &
COOLING TOWER PLANS**

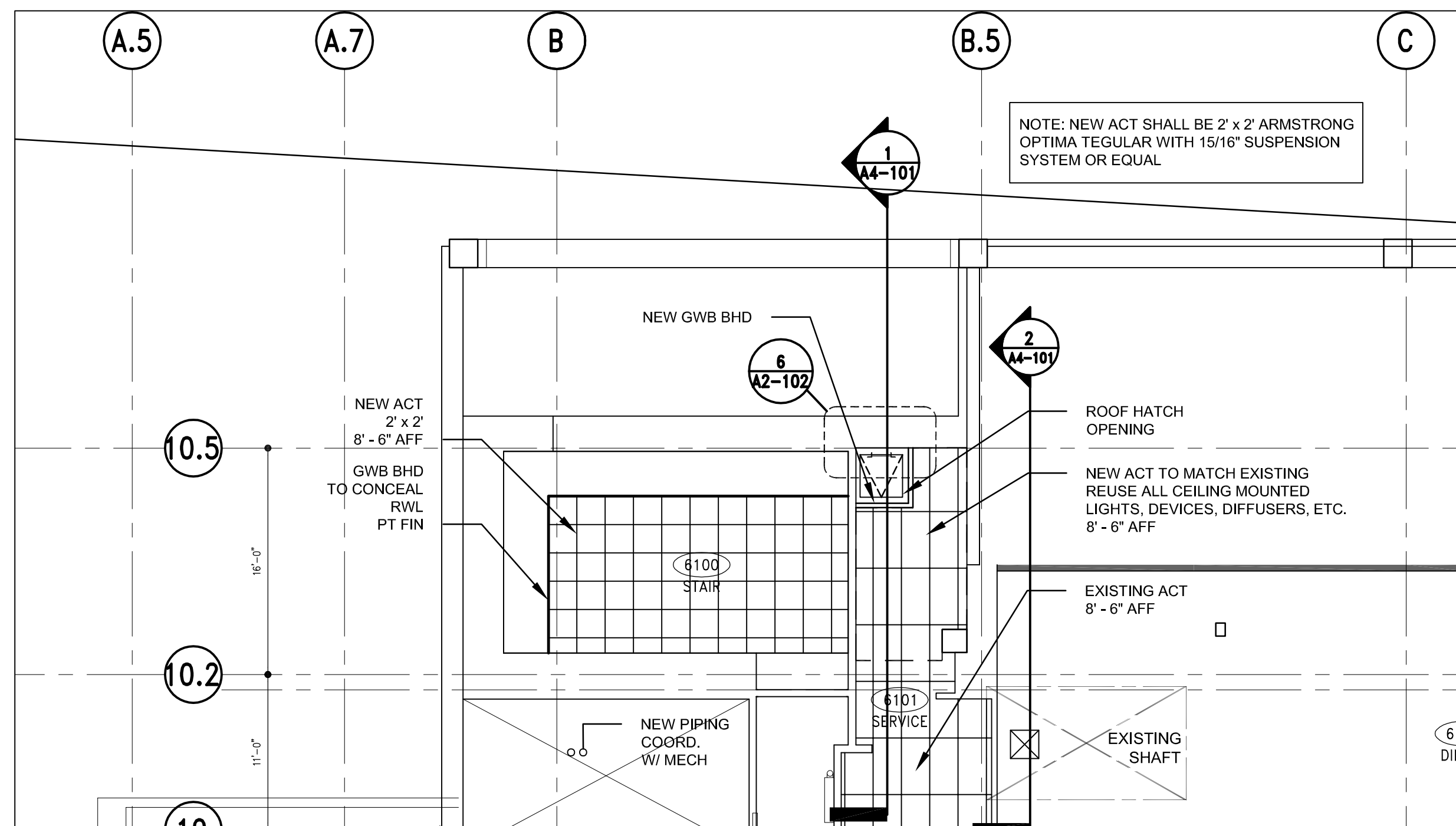
| | |
|--------------|-----------|
| SCALE | DWG. No. |
| 1/8" = 1'-0" | A2-102 |
| PROJ. NO. | 1605-05-3 |



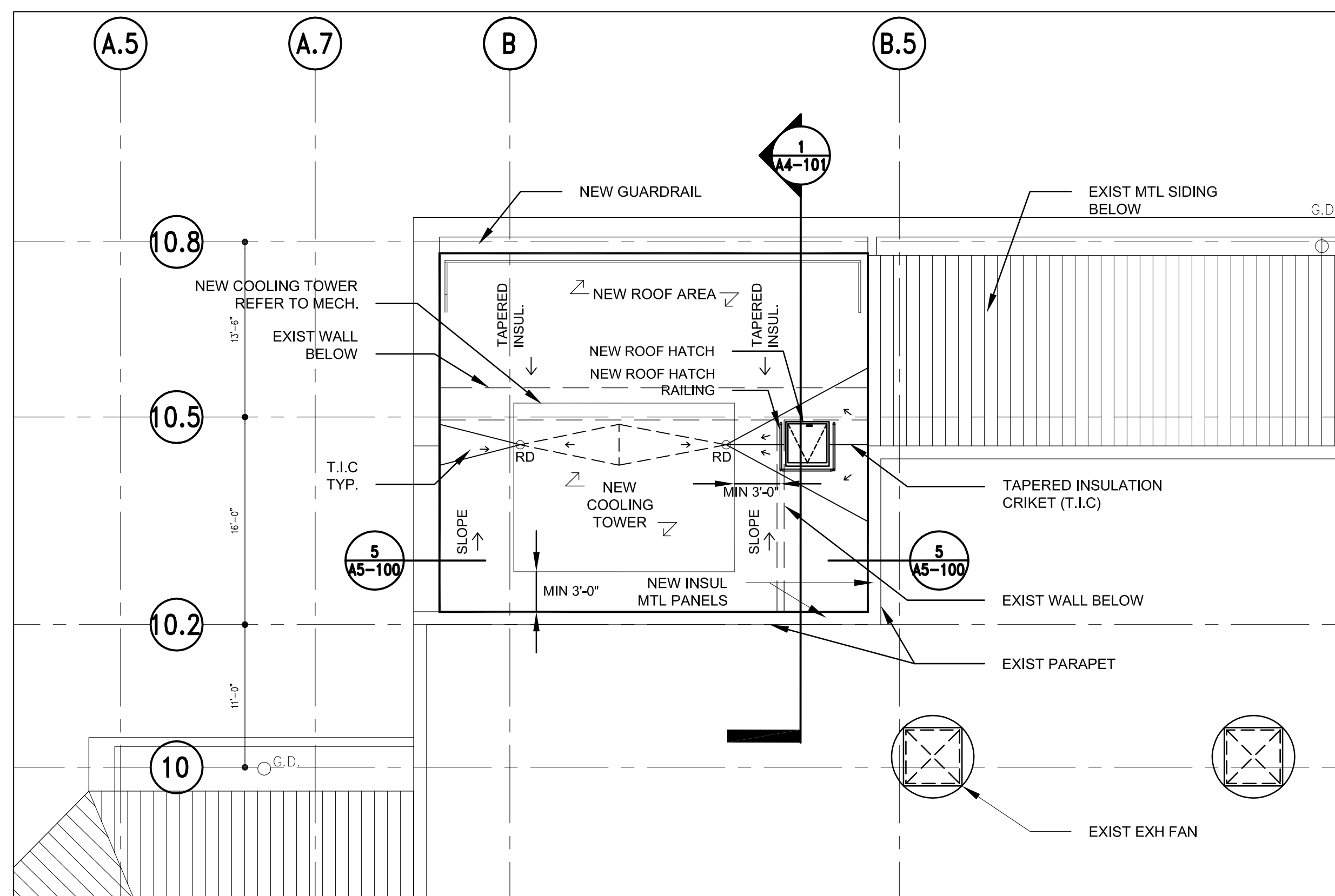
7 INTERMEDIATE SECTION (LEVEL 76 THROUGH 95)
3/4" = 1'-0"



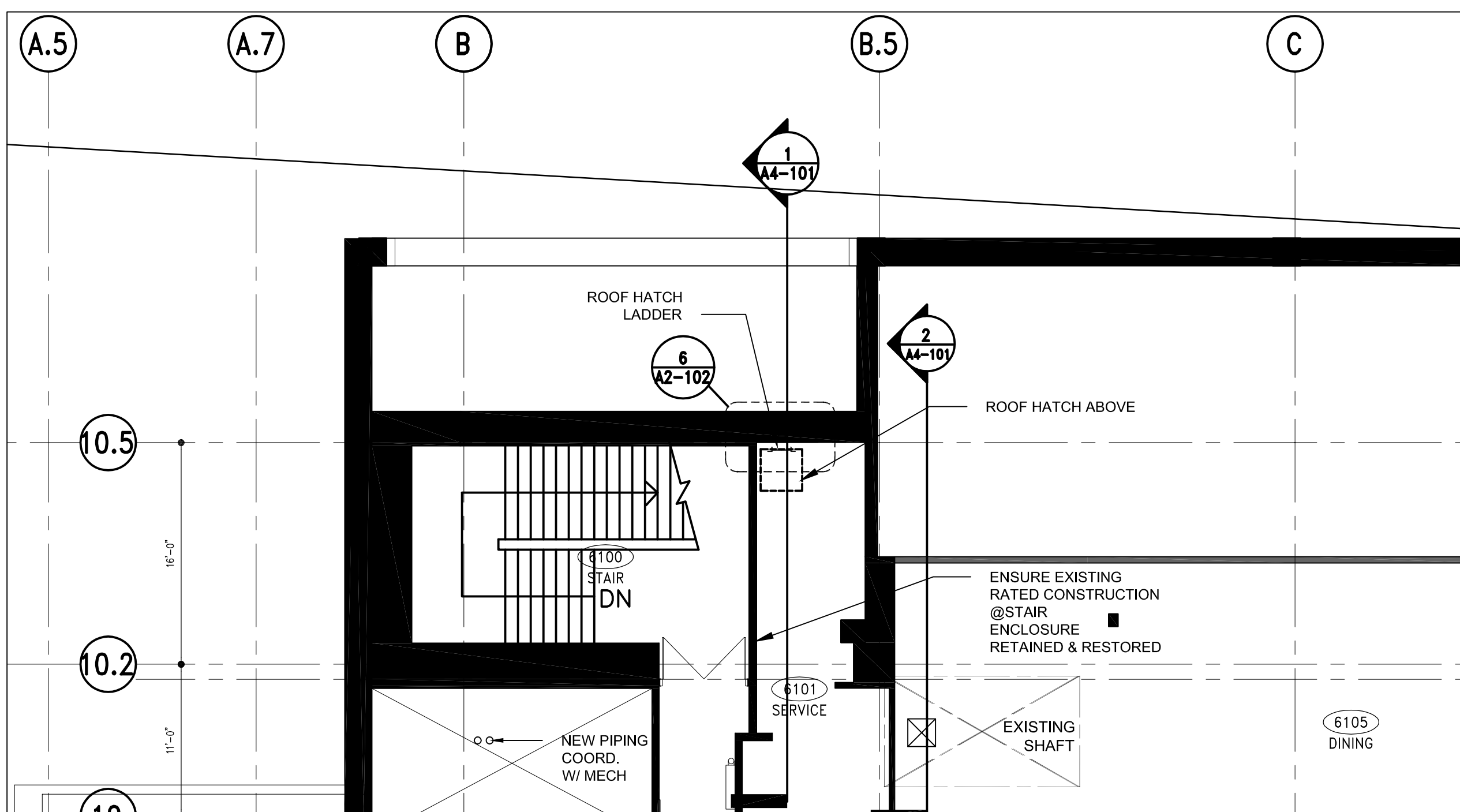
6 ROOF HATCH LADDER DETAIL
1" = 1'-0"



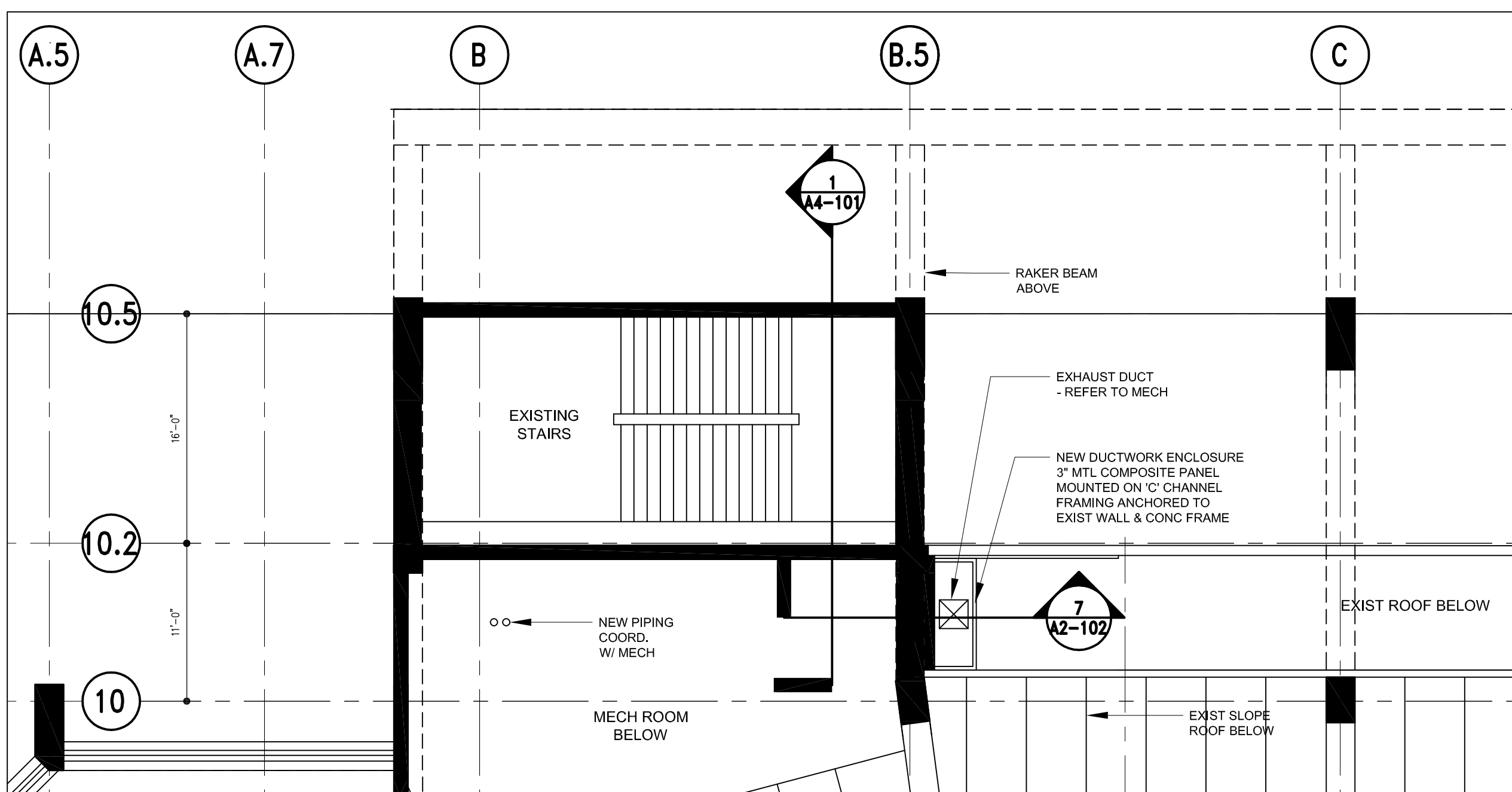
5 CLUB LEVEL REFLECTED CEILING PLAN (LEVEL 118)
1/8" = 1'-0"



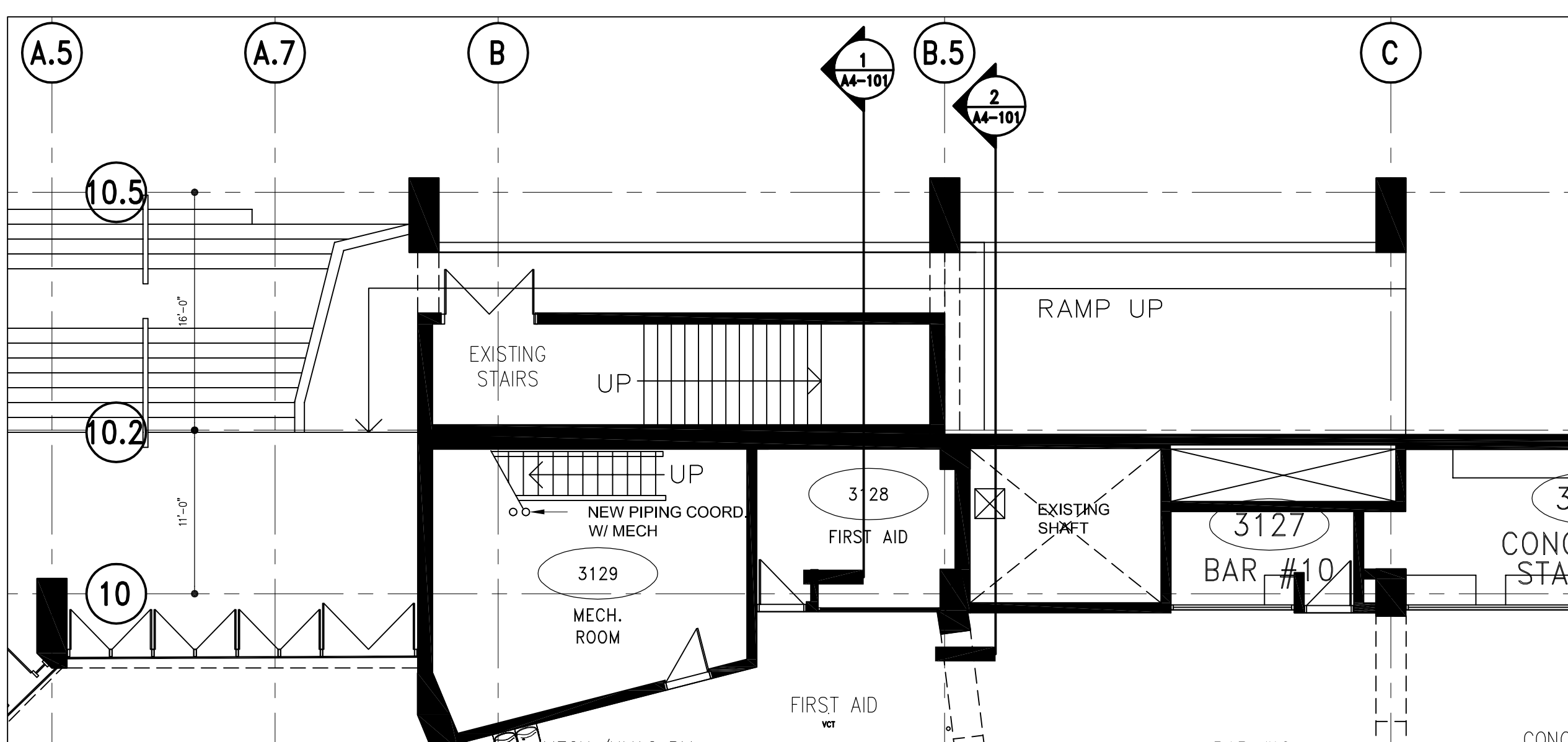
4 COOLING TOWER LEVEL FLOOR PLAN
1/8" = 1'-0"



3 CLUB LEVEL PLAN (LEVEL 118)
1/8" = 1'-0"

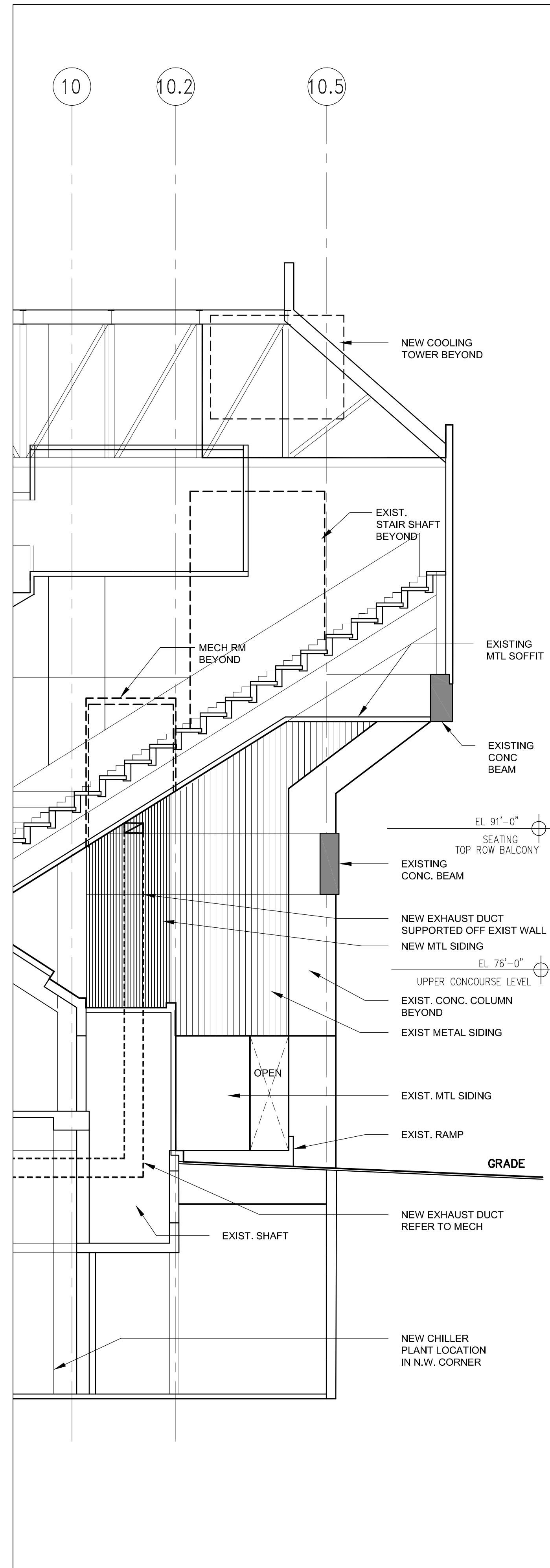


2 INTERMEDIATE STAIR PLAN (LEVEL 76 THROUGH 95)
1/8" = 1'-0"

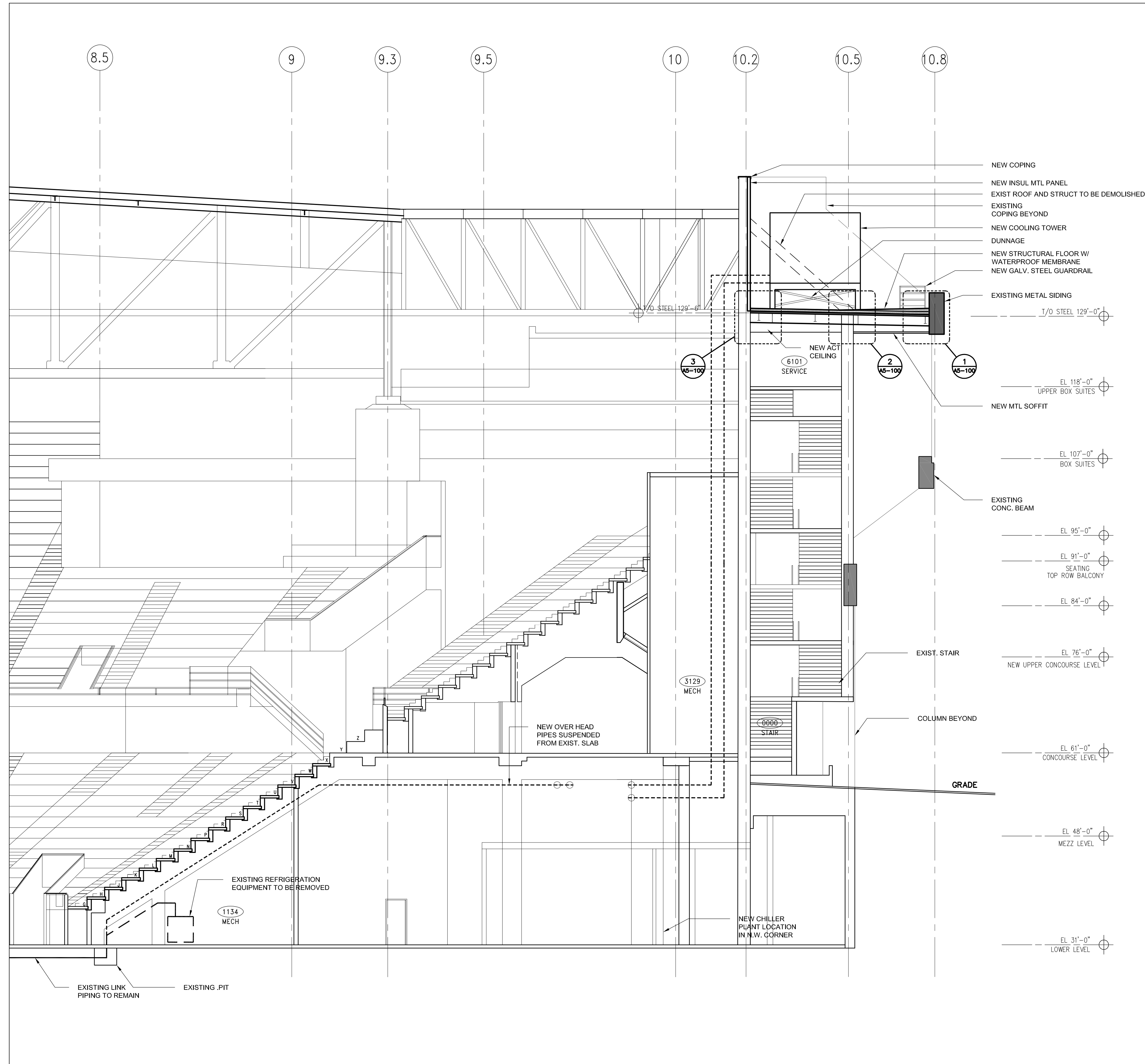


1 CONCOURSE LEVEL PARTIAL PLAN (LEVEL 61)
1/8" = 1'-0"

PLOTDATE: 09 Jan '20 - 5:21pm
FILENAME: K:\1605-05-3 Hartford Chiller\00_CAD\02_Working\Sheets\A2-102 STAIR PLANS.dwg
XREFS:



2 PARTIAL SECTION THROUGH PIPE SHAFT
1/8" = 1' - 0"



1 SECTION THROUGH PIPE SHAFT TO NEW COOLING TOWER
1/8" = 1' - 0"

| | | |
|---|----------------|------------|
| 1 | ISSUED FOR BID | 2020-01-09 |
| | DESCRIPTION | DATE |

REVISIONS/ISSUES

CONTRACTOR SHALL CHECK AND VERIFY ALL DIMENSIONS AND REPORT ANY OMISSIONS OR DISCREPANCIES TO THE ARCHITECT BEFORE PROCEEDING WITH THE WORK. DO NOT SCALE THE DRAWINGS.

| | |
|------|--|
| SEAL | |
| | |
| | |
| | |
| | |
| | |
| | |
| | |
| | |
| | |

| | |
|--------------|-------------|
| DRAWN | SL + TG |
| CHECKED | LL |
| DATE PLOTTED | 21 FEB 2019 |

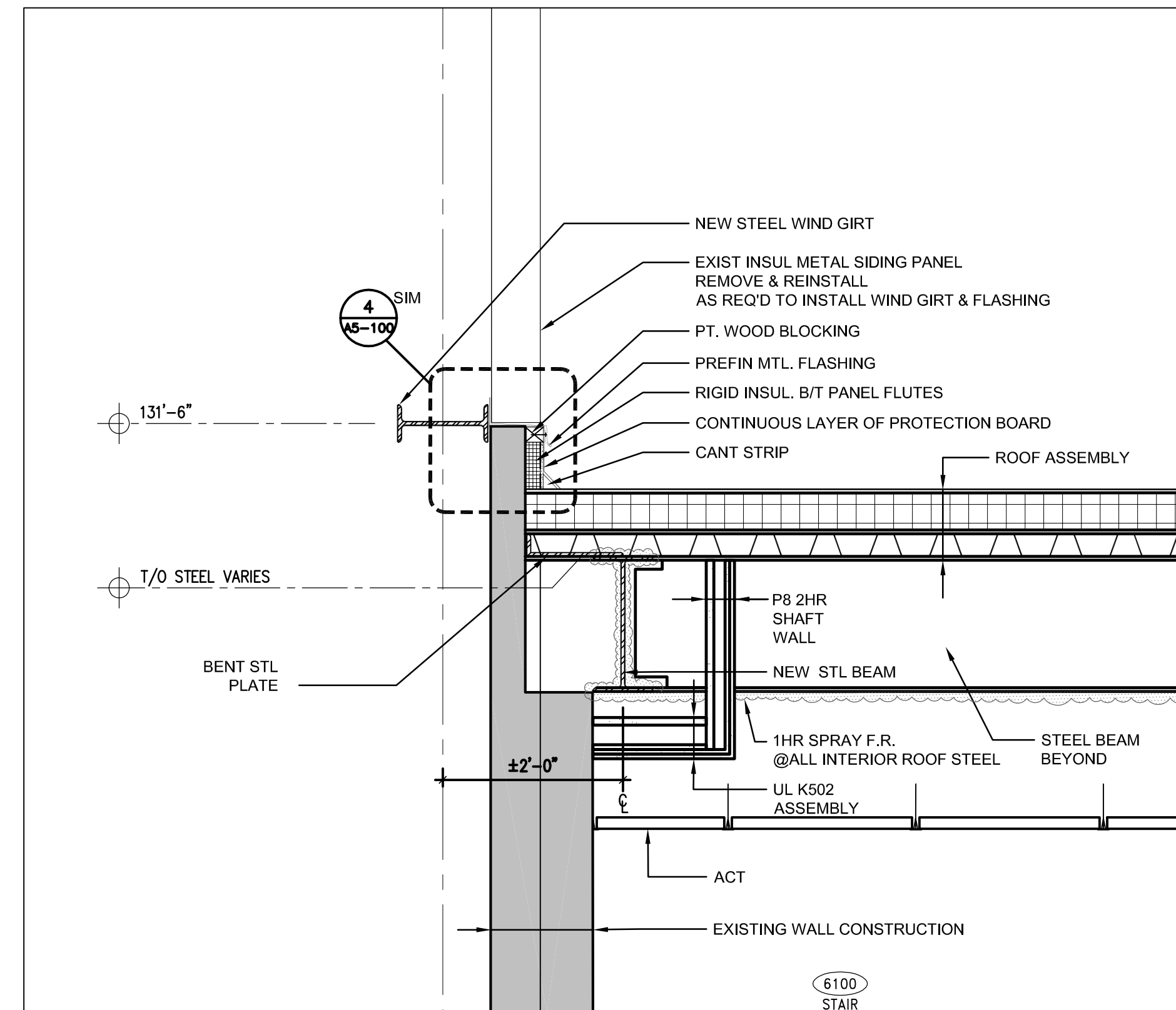
XL CENTER
1 CIVIC CENTER PLAZA
HARTFORD, CT

CHILLER PLANT RELOCATION

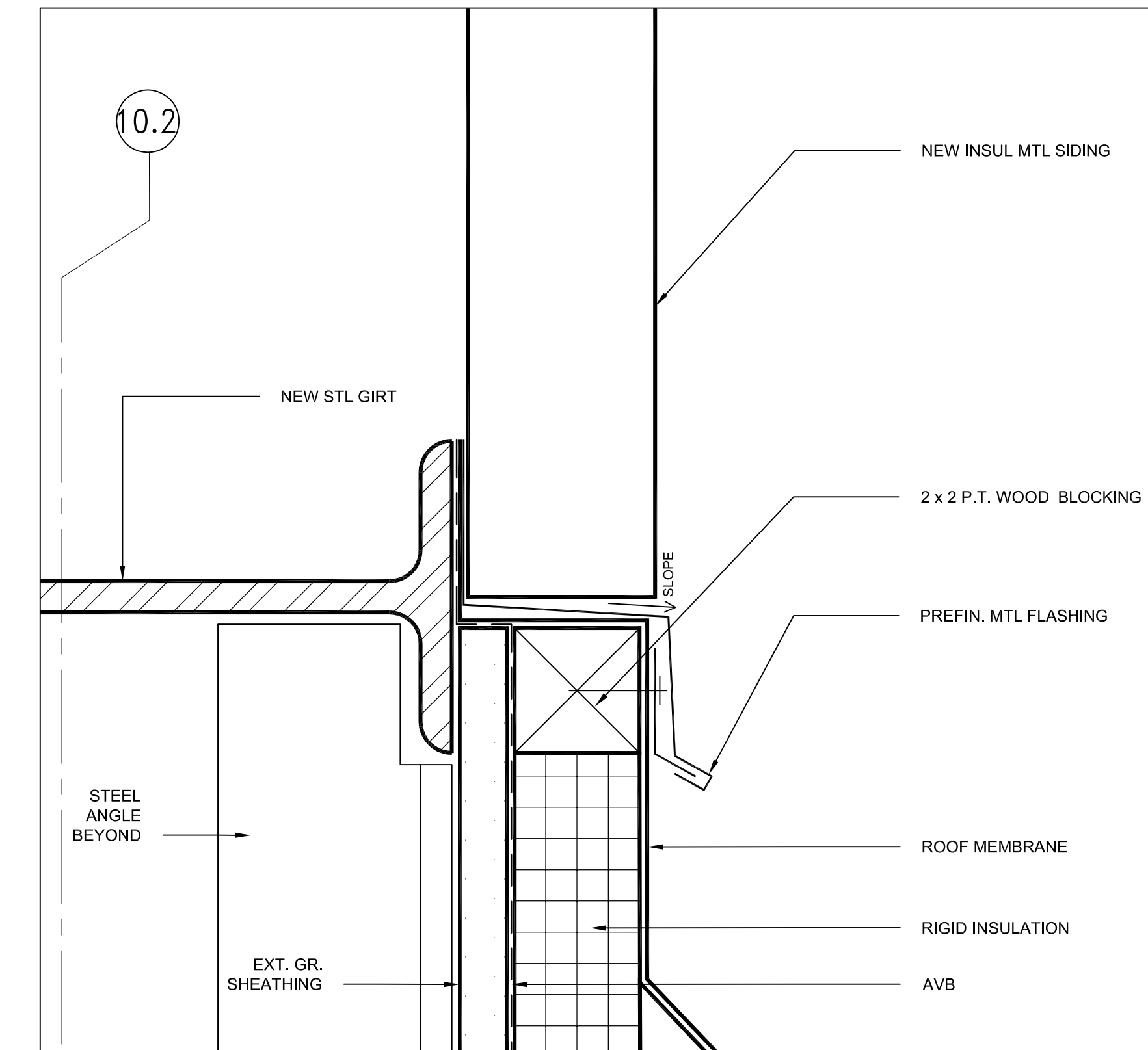
| | |
|------------|---------|
| DWG. TITLE | SECTION |
|------------|---------|

| | | | |
|-----------|--------------|----------|--------|
| SCALE | 1/8" = 1'-0" | DWG. No. | A4-101 |
| PROJ. NO. | 1605-05-3 | | |

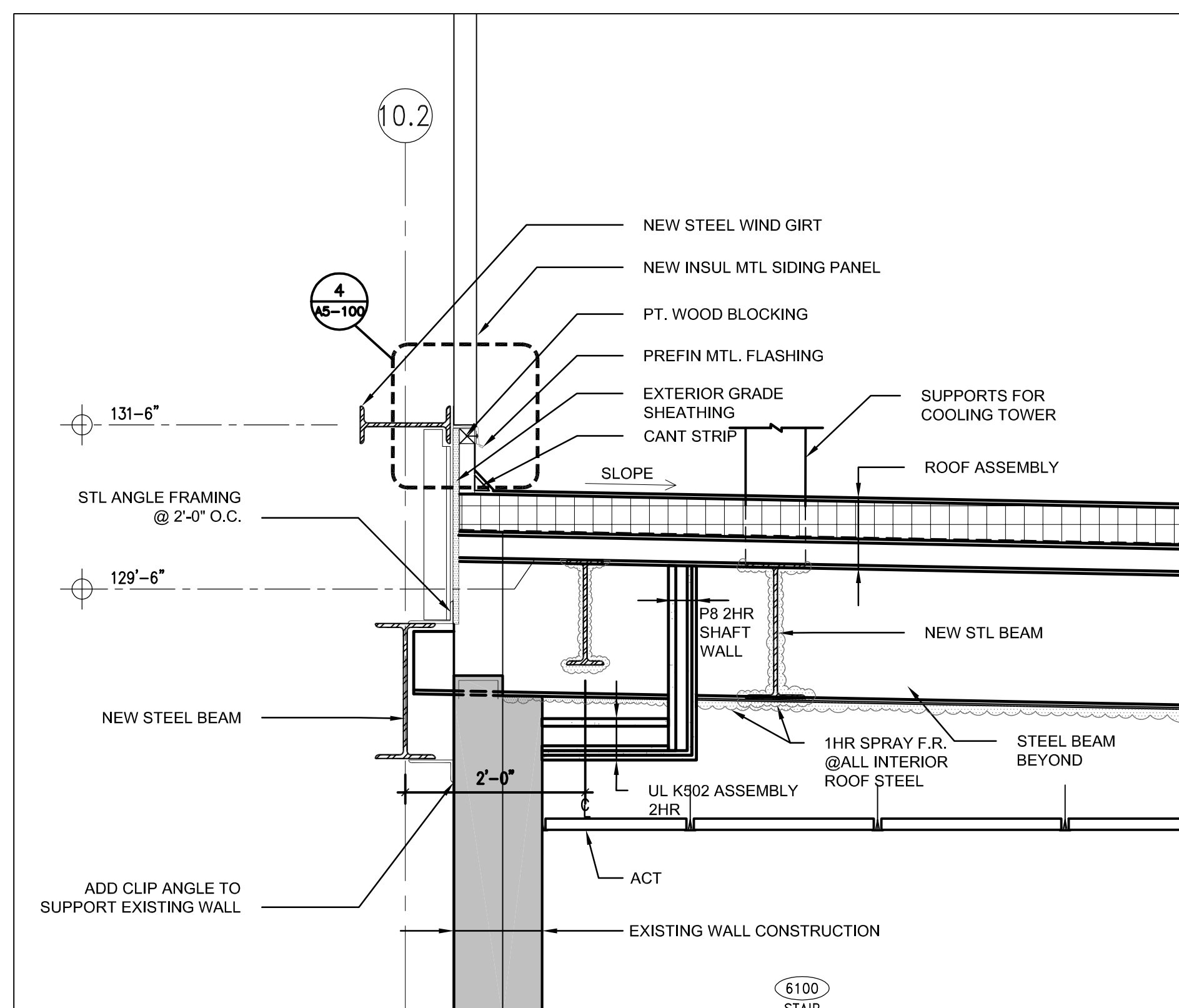
PLOTDATE: 09 Jan '20 - 5:21pm
 FILENAME: K:\1605-05-3 Hartford Chiller\00_0 Drawings\00_CAD\02_Working\SHEETS\A-101 SECTION.dwg
 XREFS:



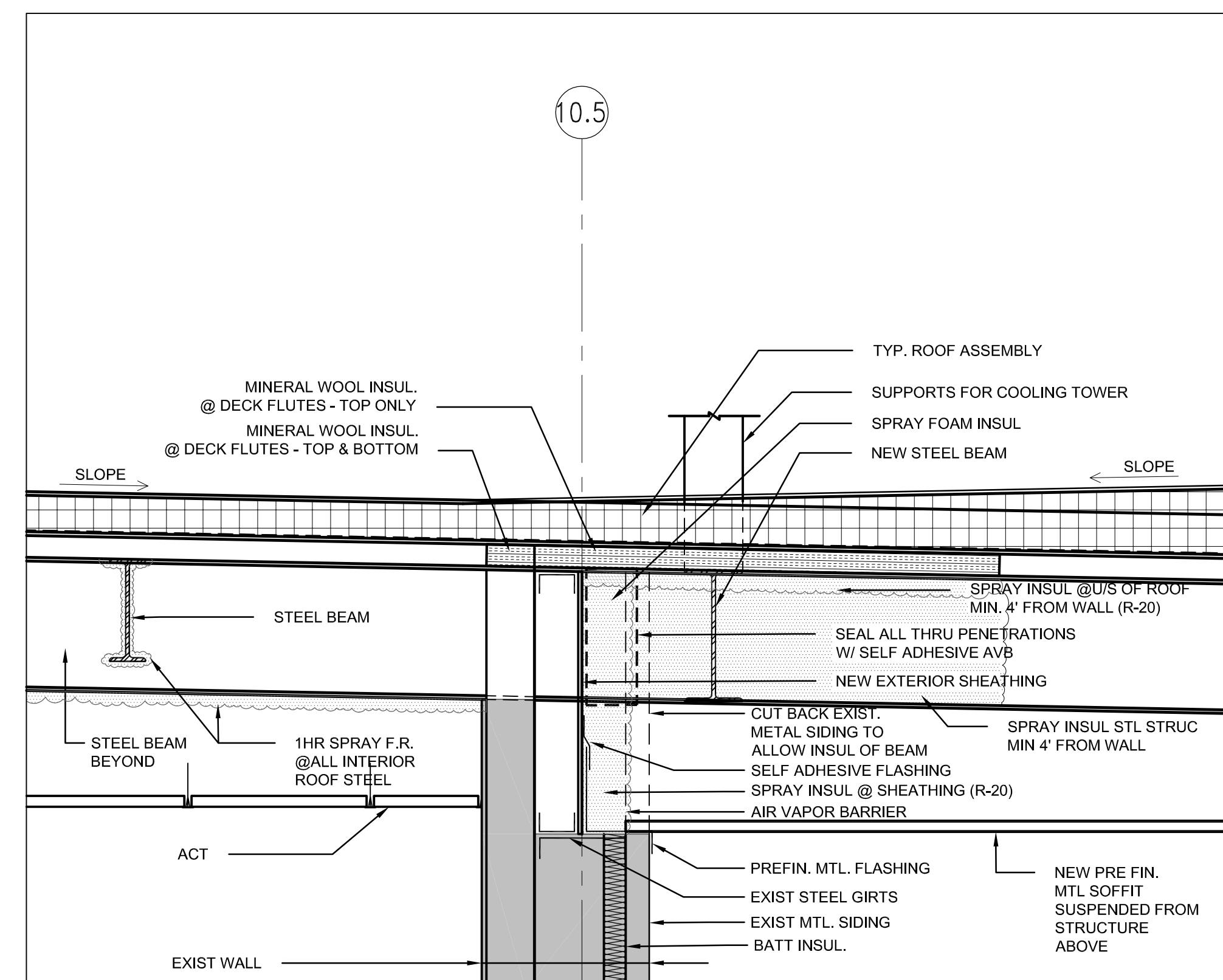
5 SIDE WALL DETAIL
3/4" = 1' - 0"



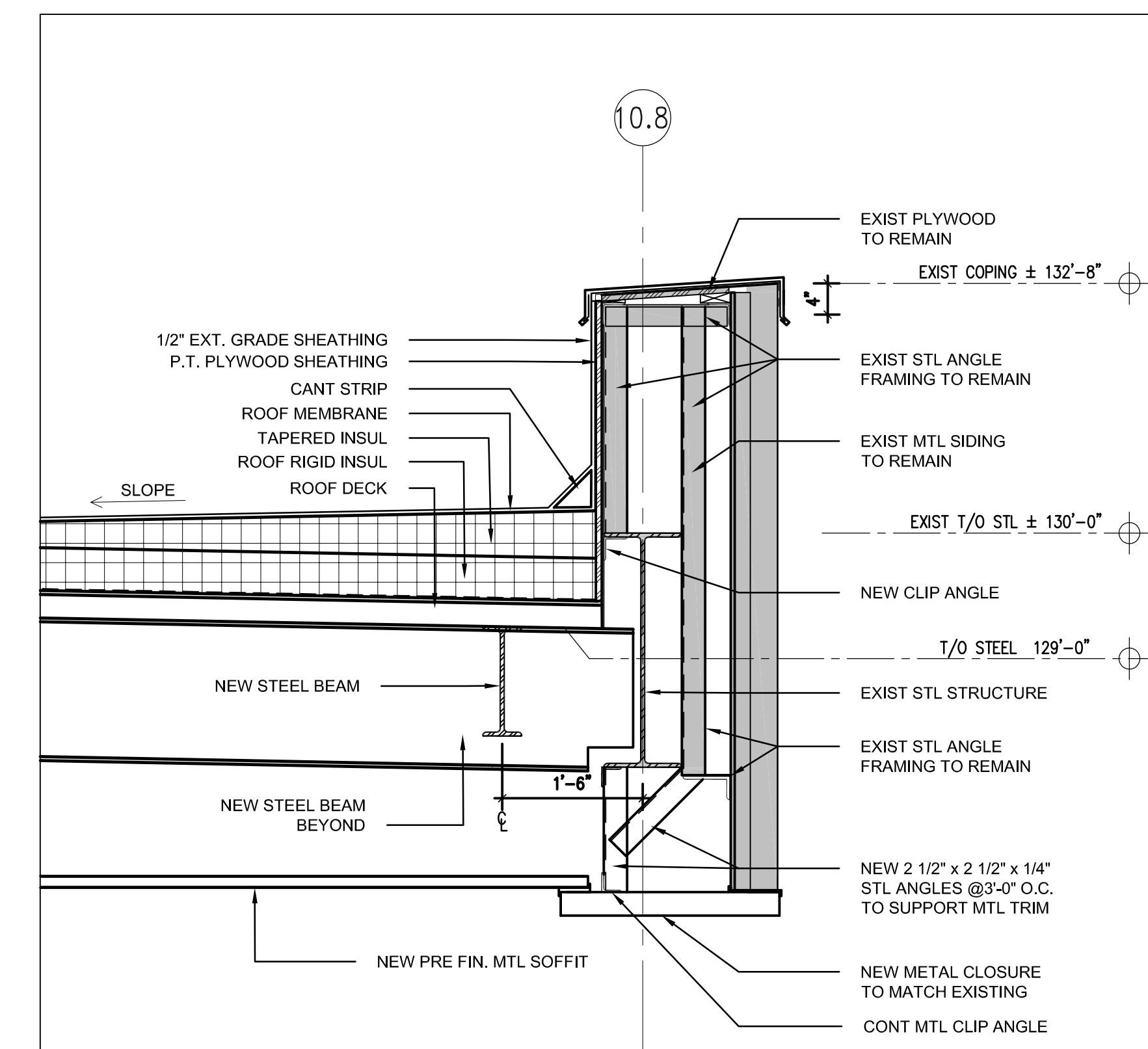
4 ROOF DETAIL
6" = 1' - 0"



3 ROOF DETAIL
3/4" = 1' - 0"



2 ROOF DETAIL
3/4" = 1' - 0"



1 ROOF DETAIL
3/4" = 1' - 0"

| | | |
|---|----------------|------------|
| 1 | ISSUED FOR BID | 2020-01-09 |
| | DESCRIPTION | DATE |

REVISIONS/ISSUES

CONTRACTOR SHALL CHECK AND VERIFY ALL DIMENSIONS AND REPORT ANY OMISSIONS OR DISCREPANCIES TO THE ARCHITECT BEFORE PROCEEDING WITH THE WORK. DO NOT SCALE THE DRAWINGS.

SEAL

| | |
|--------------|-------------|
| DRAWN | SL + TG |
| CHECKED | LL |
| DATE PLOTTED | 21 FEB 2019 |

XL CENTER
1 CIVIC CENTER PLAZA
HARTFORD, CT

**CHILLER PLANT
RELOCATION**

DWG. TITLE
ROOF DETAILS

| | |
|-----------|-----------|
| SCALE | DWG. No. |
| AS NOTED | A5-100 |
| PROJ. No. | 1605-05-3 |

PLOTDATE: 09 Jan '20 1:52:46pm
 FILENAME: K:\1605-05-3 Hartford Chiller\00_0 Drawings\00_CAD\02_Working\SHEETS\A5-100 DETAILS.dwg
 XREFS:



CAPITAL REGION DEVELOPMENT AUTHORITY

BRISBROOK BEYON ARCHITECTS

S C I ARCHITECTS
14 Duncan Street 4th Floor
Toronto, Ontario, CA M5H 3G8
Tel (416) 591 8999 Fax (416) 591 9087

Severud Associates
CONSULTING ENGINEERS P.C.
Tel (212) 986 3700 Fax (212) 687 6467

meengineers
CONSULTING ENGINEERS
Tel (310) 842 8700 Fax (310) 842 7700

| | | |
|---|----------------|------------|
| 1 | ISSUED FOR BID | 2020-01-09 |
| | DESCRIPTION | DATE |

REVISIONS/ISSUES

CONTRACTOR SHALL CHECK AND VERIFY ALL DIMENSIONS AND REPORT ANY OMISSIONS OR DISCREPANCIES TO THE ARCHITECT BEFORE PROCEEDING WITH THE WORK. DO NOT SCALE THE DRAWINGS

SEAL

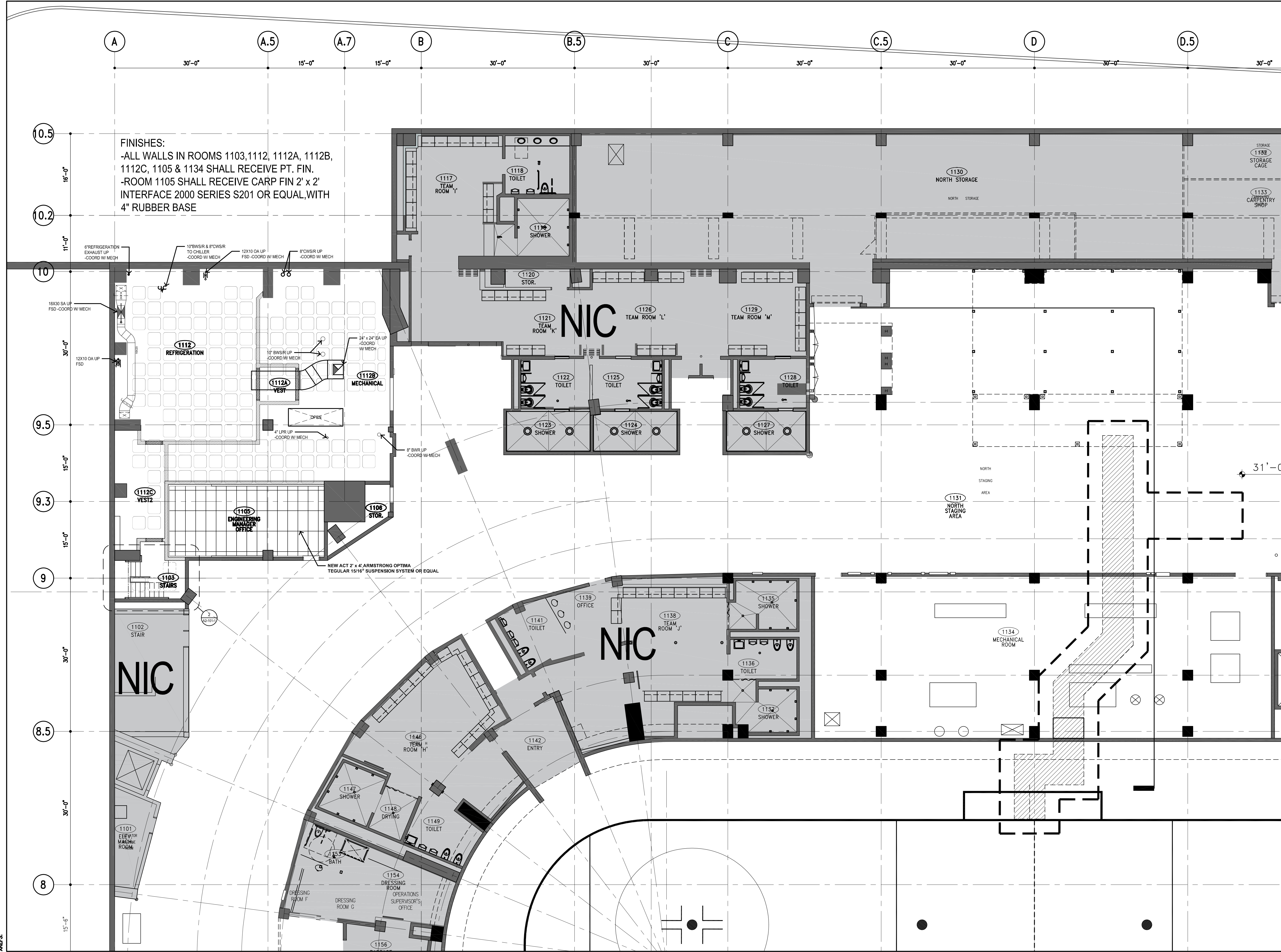
DRAWN: SL + TG
CHECKED: LL
DATE PLOTTED: 21 FEB 2019

NORTH

XL CENTER
1 CIVIC CENTER PLAZA
HARTFORD, CT
**CHILLER PLANT
RELOCATION**

DWG. TITLE
**REFLECTED
CEILING PLAN**

SCALE: 1/8" = 1'-0"
PROJ. NO. 1605.05-3
DWG. No. **A8-101**



PLOTDATE: 09 Jan '20 - 5:25pm
FILENAME: K:\1605.05-3 Hartford Chiller\00_CAD\02_Working\SHEETS\A8-101_CEILING_PLAN.dwg
XREFS: