



**RIVERFRONT
RECAPTURE**



About Riverfront Recapture

Riverfront Recapture is a nonprofit (501c3) organization that manages, operates, maintains, and activates four connected parks covering almost 170 acres along 3.5 miles of the Connecticut River. Riverfront Recapture has been fulfilling its mission to connect people with the Connecticut River for 40 years. Since 1981, Riverfront Recapture has led the effort to reconnect with the river in ways that enhance quality of life and make the region a better place to work, live and play.

Riverfront Recapture offers year-round access to vibrant riverfront parks and a seasonal calendar of events, programming, and outdoor activities. Riverfront Recapture's dedication to the bold vision of a beautiful riverfront park system resulted in the acquisition of 60 acres of riverfront land on the Hartford-Windsor line to build a new community park.

Critical funding for the purchase was provided by the Richard P. Garmany Fund at the Hartford Foundation for Public Giving, with additional support from the Mowell Family Fund at the Hartford Foundation for Public Giving.



We connect people
with the Connecticut River.





We connect people
with the Connecticut
River.

Here's a snapshot of
how we connected
people in 2023.

PARK
VISITORS
803,866

SPORTS LEAGUE
PARTICIPANTS
2,300

HARTFORD TRAIL
USAGE, AUGUST
28,427

BOATS
LAUNCHED
2,127

FITNESS CLASS
ATTENDEES
1,338

EAST HARTFORD TRAIL
USAGE, MAY
14,693

VOLUNTEERS
1,153

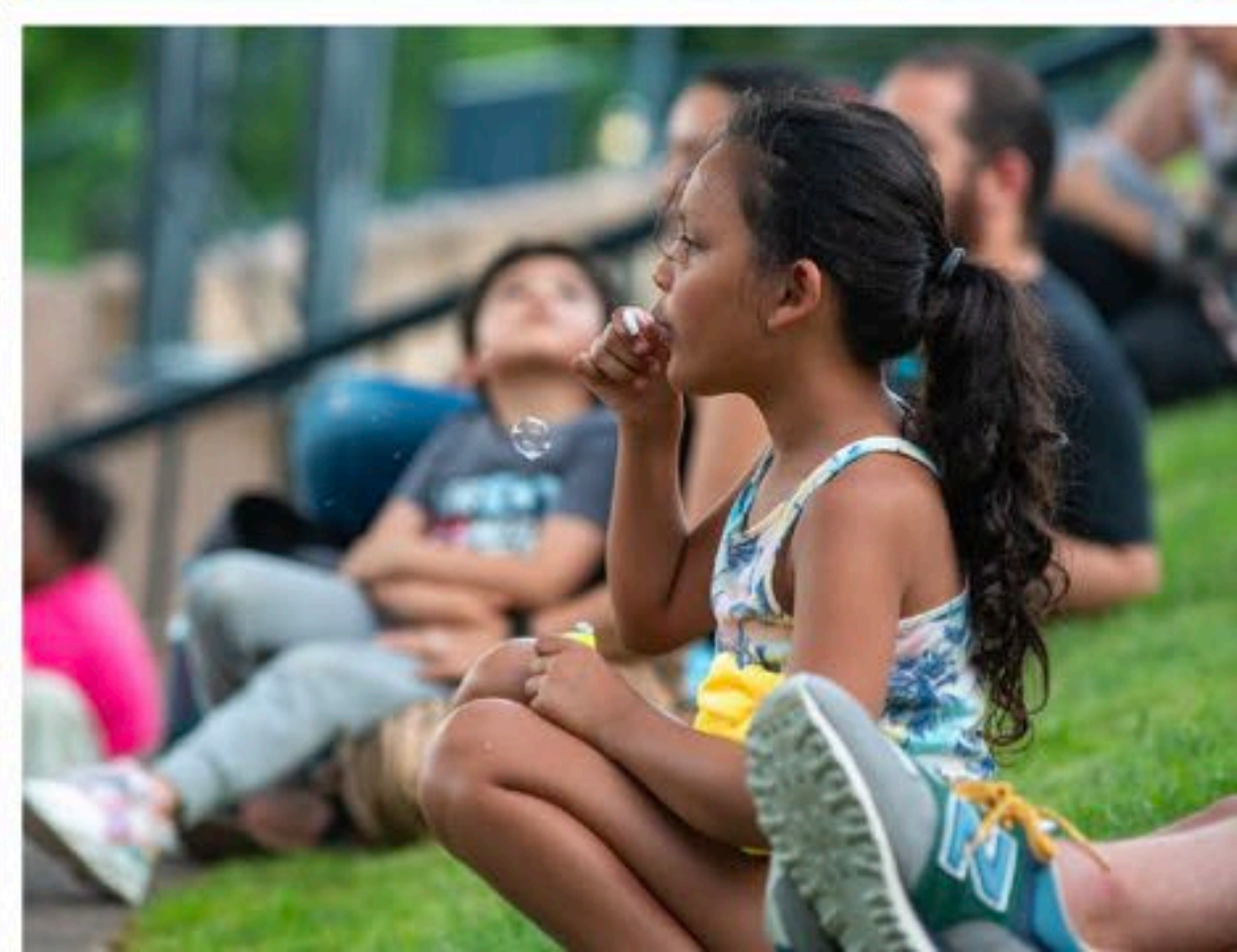
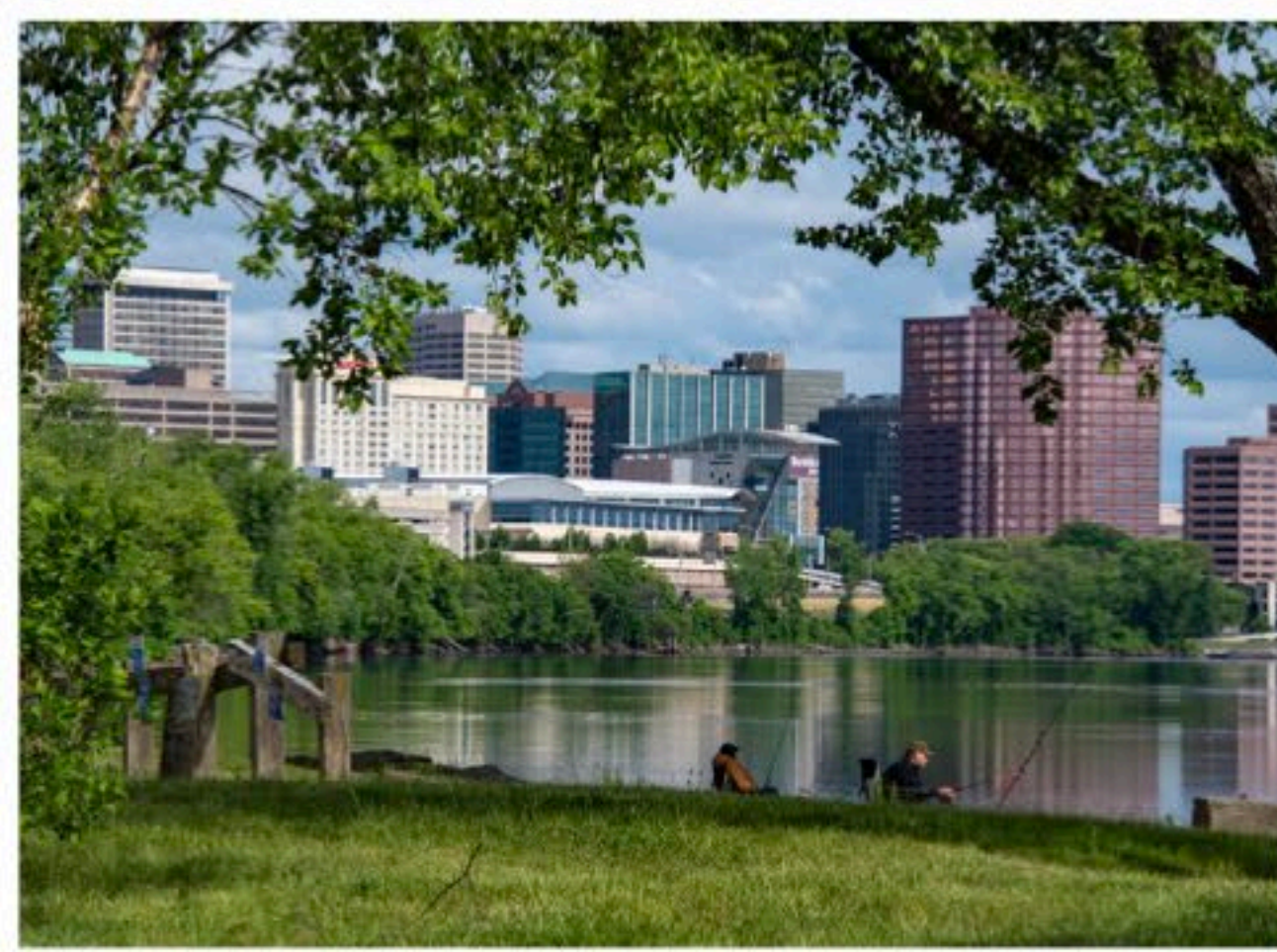
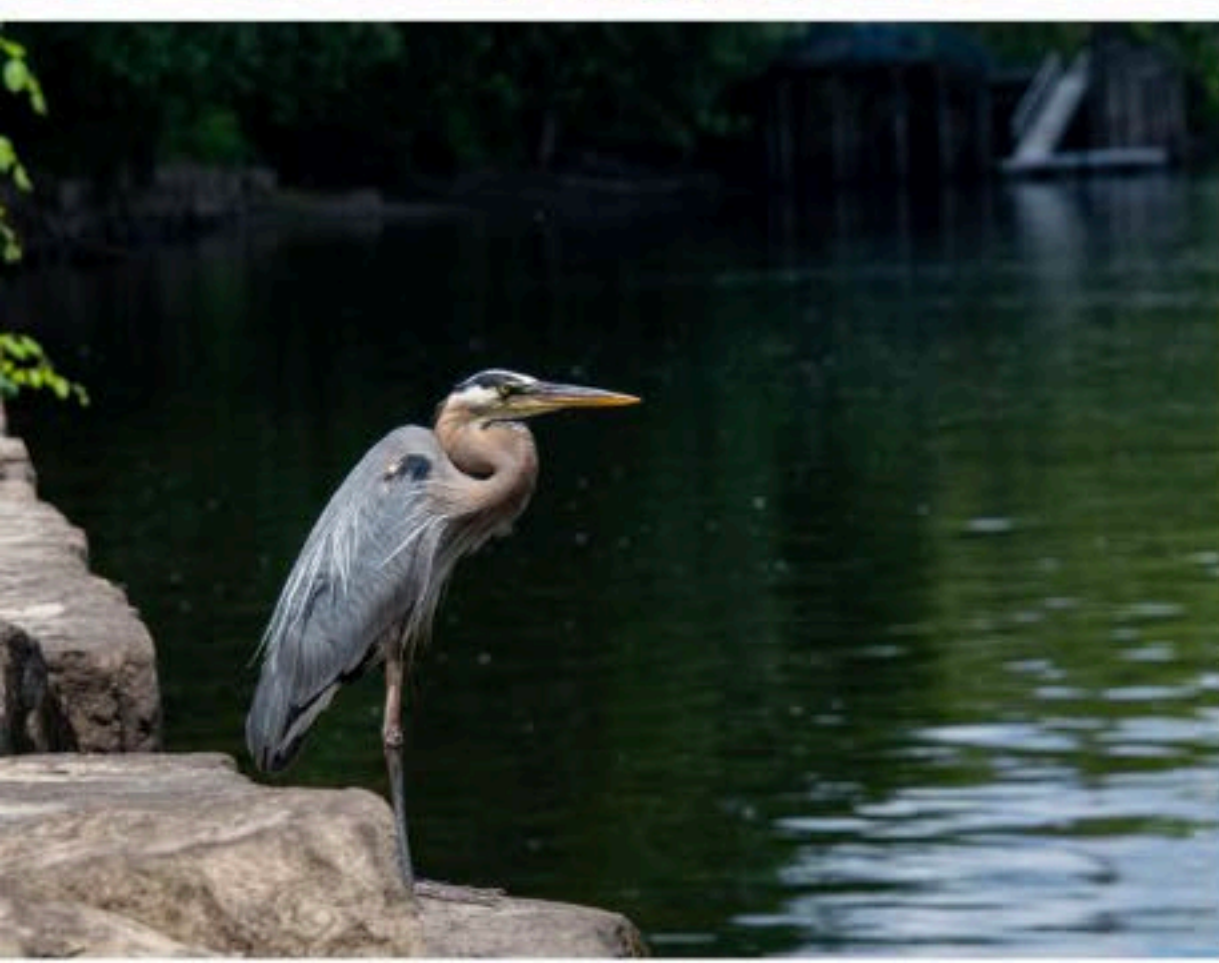
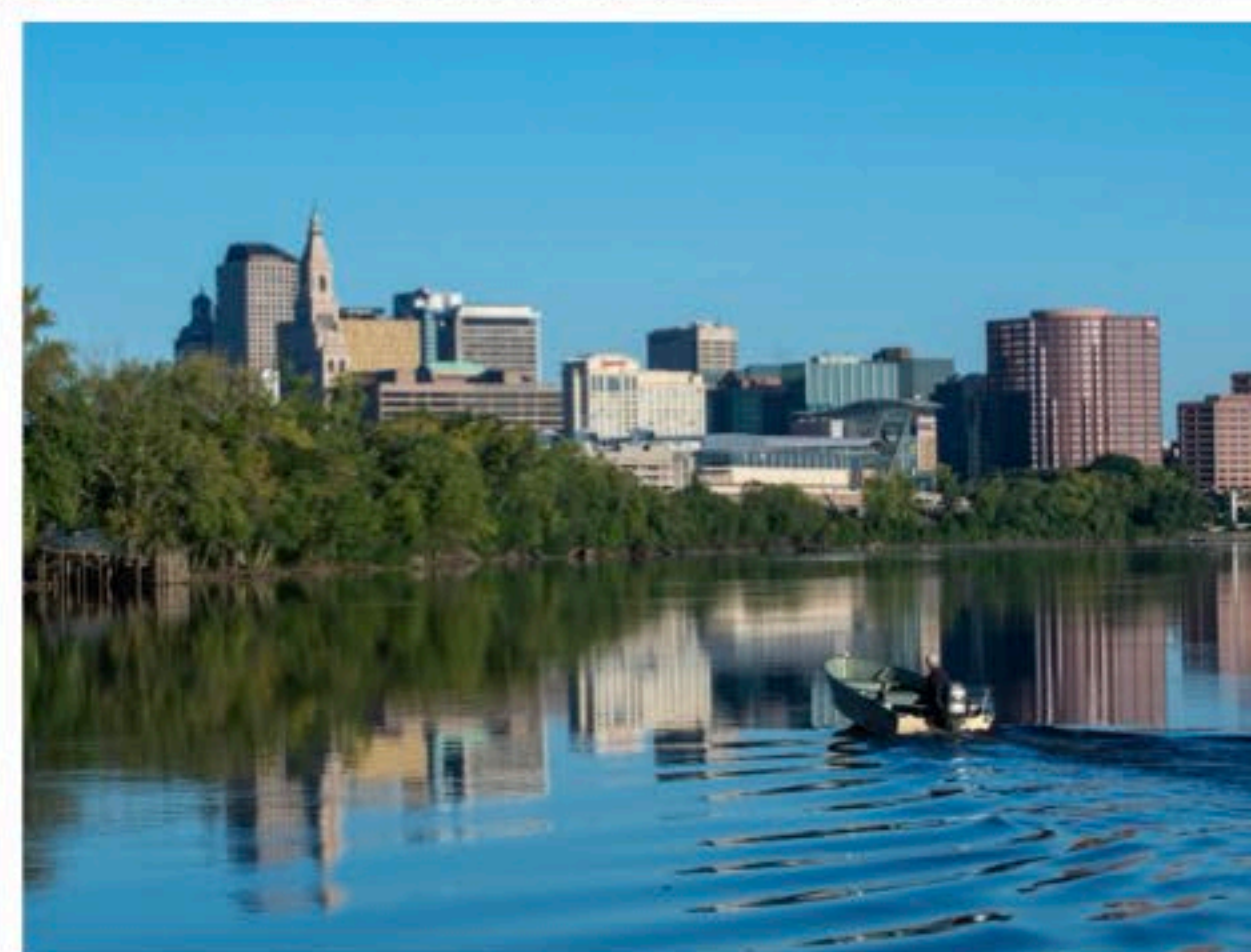
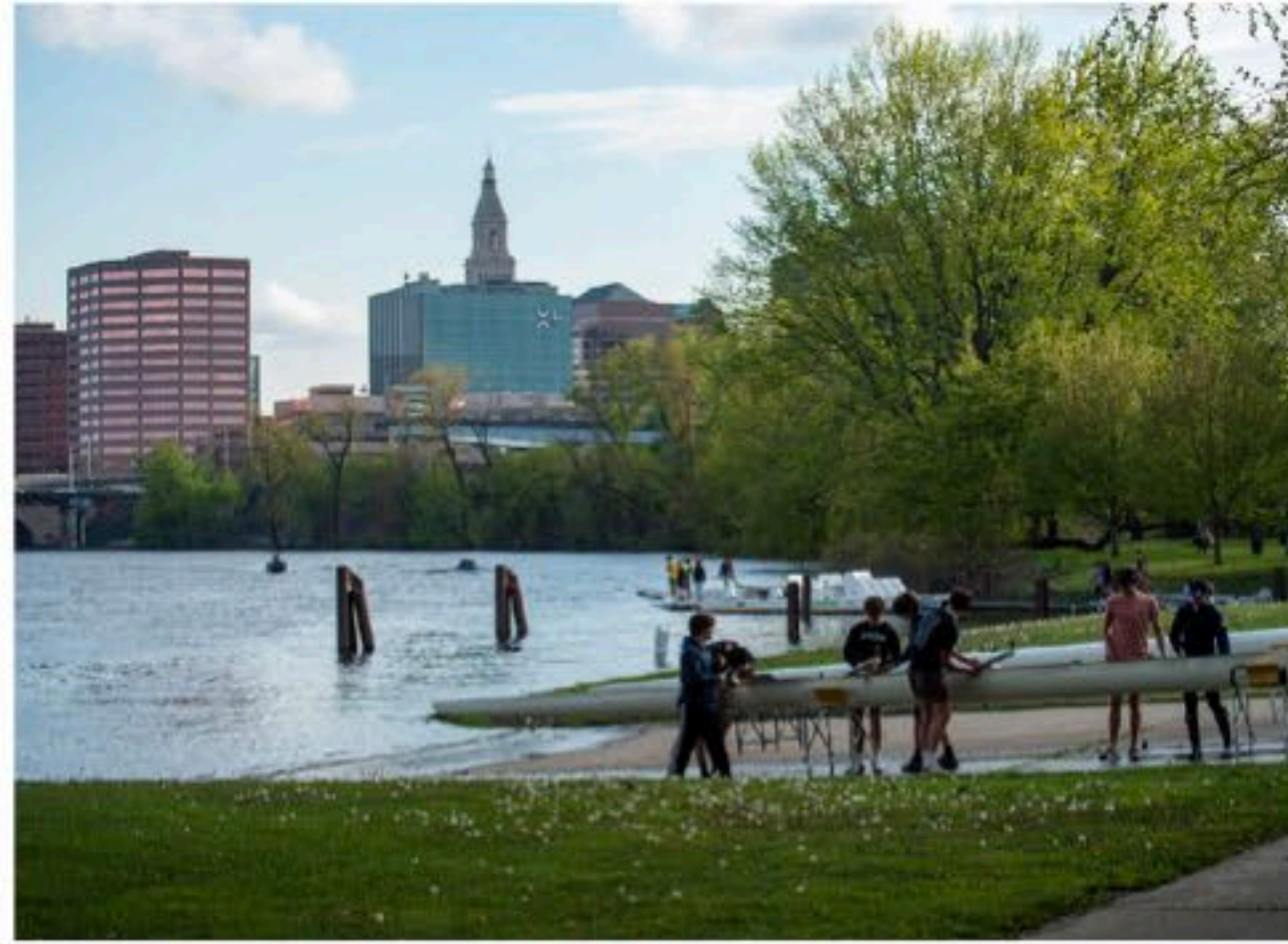
FREE PUBLIC EVENTS
149

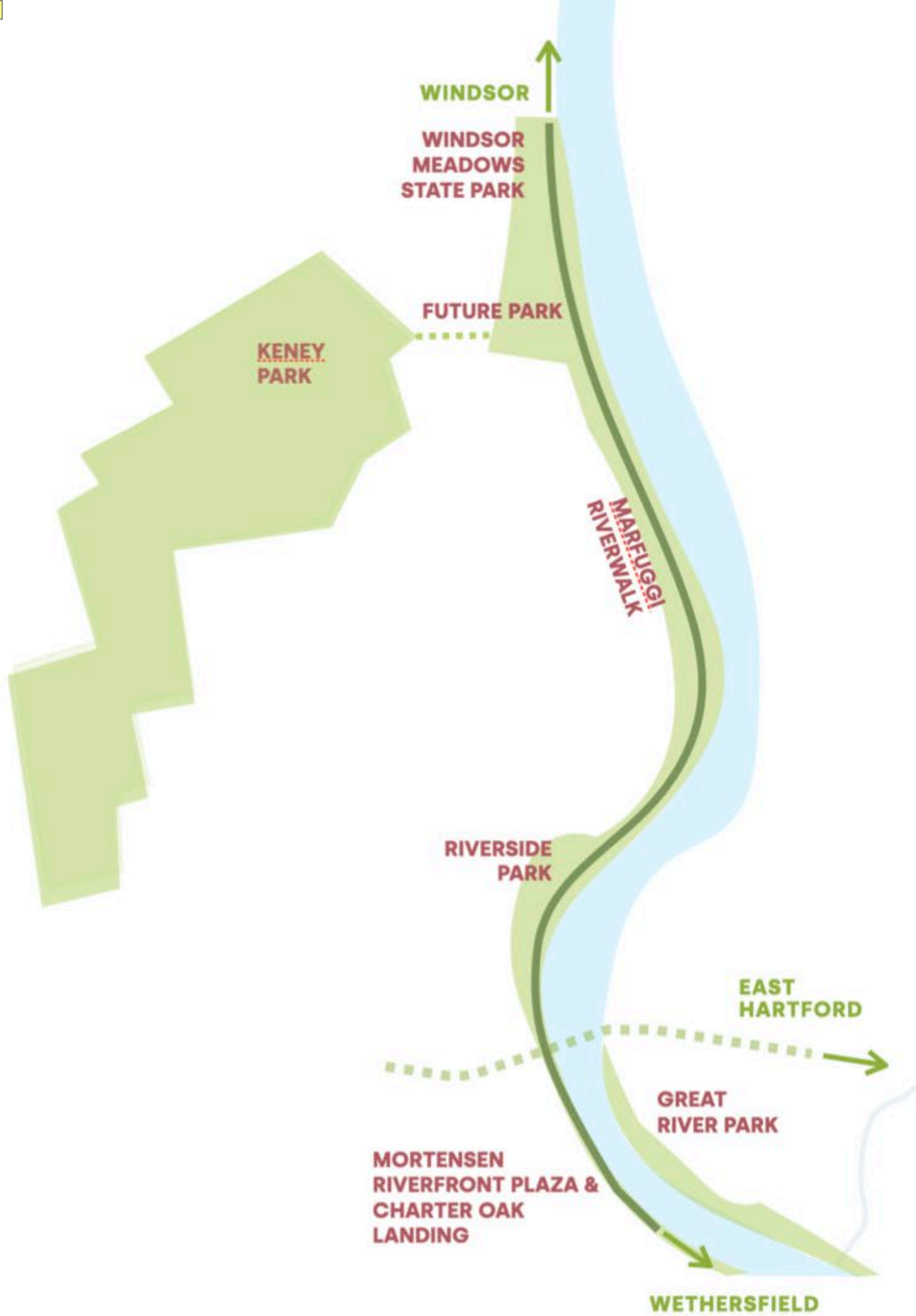
IRISH ROAD BOWLERS
200

ROWING
ATTENDANCE
28,625

NEW PARK
TOUR ATTENDEES
240

HEAD OF THE
RIVERFRONT ATHLETES
5,100





Creating Connections & Connecting Communities



Riverfront Recapture
has 17 different
projects underway in
Hartford, East Hartford,
Windsor and
Wethersfield

**RIVERFRONT
RECAPTURE**




Great River Park

**RIVERFRONT
RECAPTURE**

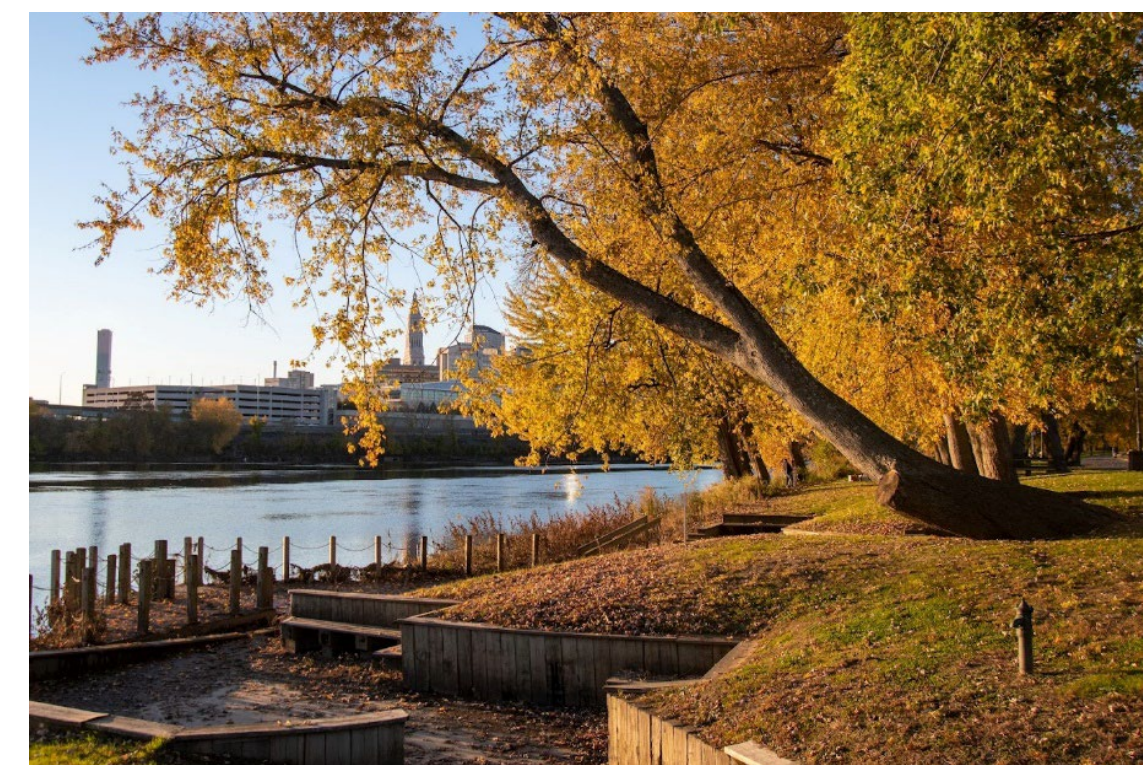

Great River Park Improvement Project – Phase 1

Project status: Awaiting permits

Funding: State of CT Bonds, via Capital Region Development Authority

Estimated construction cost: \$2,230,000

Project elements:
New 80' fishing pier
ADA accessible boat ramps
Remove wooden wharfs
Replace lamp posts
Electrical improvements
New signage within park





CT Recreational Trails Grant
application submitted



Our Future Park



**RIVERFRONT
RECAPTURE**



RLI Planning, Design, Permitting & Brownfield Remediation

Project status:	Awaiting permits
Funding:	CRDA \$1,000,000 US EPA \$500,000 State DEEP \$125,000 State DECD \$1,200,000
Project cost:	\$2,825,000
Project elements:	Phase 1 planning and design Regulatory permitting Remediation of brownfield that includes Riverfront 60 acres and 17 acres of state park



Windsor Riverwalk

Project status: Awaiting permits

Funding: State DECD \$522,500 (CIF)
State DOT \$500,000
Town of Windsor \$50,000

Project cost: \$1,072,500

Project elements: Riverwalk across Windsor Meadow
State Park and bridge across
Decker's Brook



Riverfront Future Park master plan

Project status: Master plan process underway

Funding: US HUD grant via Congressman John Larson

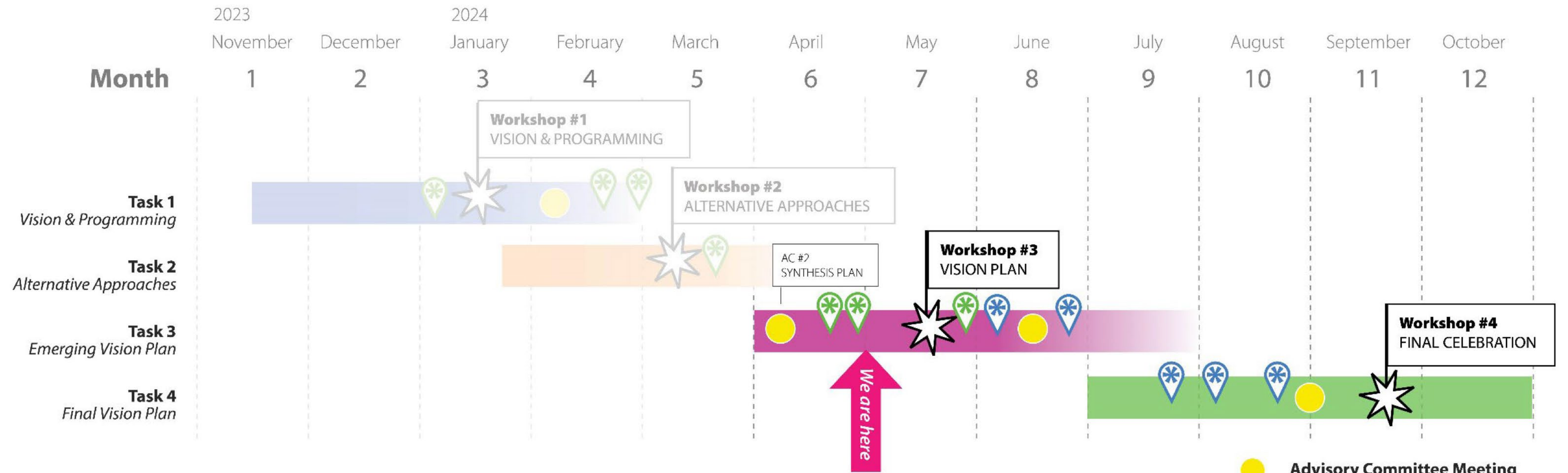
Project cost: \$900,000

Project elements: Design of new park on Hartford / Windsor line



Schedule

TASK 1 LISTENING DISCOVERY & PROGRAMMING <ul style="list-style-type: none"> • Site Analysis & Context • Initial Program Preferences • Community Vision Statement 	TASK 2 LEARNING ALTERNATIVE APPROACHES <ul style="list-style-type: none"> • Engagement Task 1 Summary • Initial Conceptual Options (3) • Preliminary Concept Feasibility 	TASK 3 COLLABORATING EMERGING VISION PLAN <ul style="list-style-type: none"> • Refined Concept Plan • Initial Market Analysis 	TASK 4 SYNTHESIZING REFINED VISION PLAN <ul style="list-style-type: none"> • Final Master Plan Design Vision • Community Celebration And Thank You • Final Report
---	---	---	--



- Windsor Pop-Up's**
1. February 22 | Windsor Food Pantry
 2. Saturday Feb 24 | Northwest Park Nature Center
 3. Saturday Feb 24 | The Bean
 4. Saturday April 20 | Windsor Food Pantry
 5. Saturday April 27 | 330 Windsor Ave CC
 6. June | Summer Teen Employment Program

- Hartford Pop-Up's**
1. Saturday Jan 6, 12 - 2pm | Winterfest
 2. Saturday April 22 | Greater Hartford Academy for the Arts
 3. Saturday April 22 | Hartford Adventist Academy
 4. Saturday April 22 | "Bulbs and Bulbs" at City Hall
 5. Friday May 24 | Downtown Salsa Social

- Summer Series Pop-Up's at Riverfront Recapture Events**
1. Saturday June 8 | CapFest
 2. Saturday June 22 | Hartbeat Music Festival
 3. July 18-20 | Riverfront Food Truck Festival
 4. Saturday August 3 | Taste of the Caribbean + Jerk Festival
 5. Saturday August 17 | Dragon Boat & Asian Festival

- Large Community Workshops**
- Workshop #1** | January 13, 2024
330 Windsor Ave Community Center
 - Workshop #2** | March 2, 2024
West Indian Social Club
 - Workshop #3** | May 18, 2024 12-2pm
Parker Memorial Community Center
 - Workshop #4** | September 14, 2024
On Site! 100 Meadow Road, Windsor

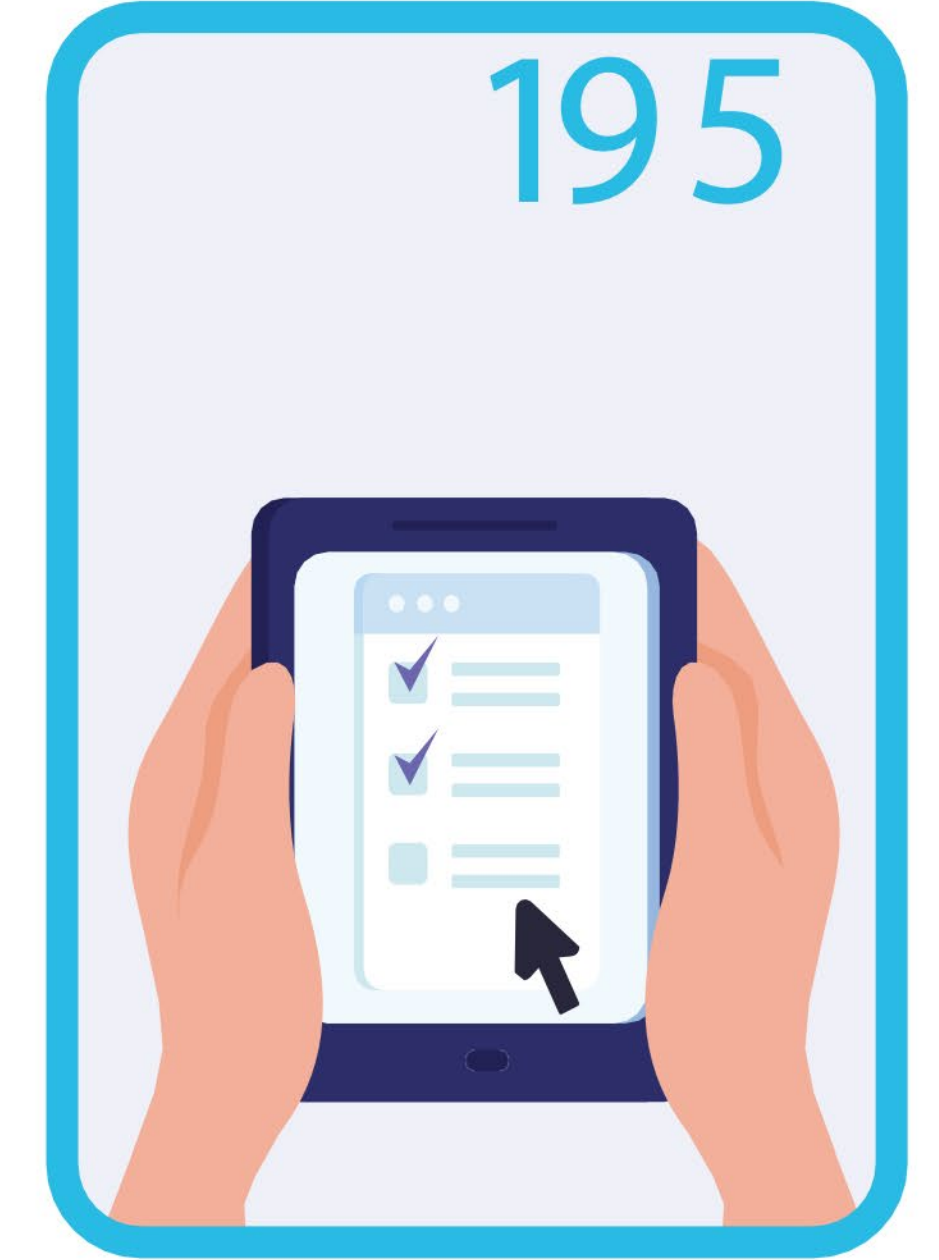
Engagement Overview



POP UPS



SURVEYS



WORKSHOPS

FOCUS GROUPS / VISIONING SESSIONS

INTERVIEWS

concept #1



concept #2



concept #3



Park Vision Plan



Riverfront Ecologies

1. Tidal Wetland
2. Stormwater Wetland
3. Big Meadow
4. Open Woodlands
5. Floodplain Forest

Community Landscapes

6. Hill & Event Lawn
7. Riverfront Copse
8. Picnic Lawns
9. Gateway Plaza
10. Community Plaza
11. Interactive Water Feature
12. Nature Discovery Play

Park Structures

13. Nature Pavilion
14. Multi-Use Stage
15. Water Access Facility
16. Overlook Pavilion

- Parking
- River Overlook



Site During Flood Events



Site Plan – Normal Water (4')



Site Plan – Flood Condition (16')



Site Plan – 100-Year Event (32')



Park Vision Plan



Riverfront Ecologies

- 1. Tidal Wetland
- 2. Stormwater Wetland
- 3. Big Meadow
- 4. Open Woodlands
- 5. Floodplain Forest

Community Landscapes

- 6. Hill & Event Lawn
- 7. Riverfront Copse
- 8. Picnic Lawns
- 9. Gateway Plaza
- 10. Community Plaza
- 11. Interactive Water Feature
- 12. Nature Discovery Play

Park Structures

- 13. Nature Pavilion
- 14. Multi-Use Stage
- 15. Water Access Facility
- 16. Overlook Pavilion

- Parking
- River Overlook



Precedents



Beer Garden & Food Vendors

Water Access Facility

Precedents



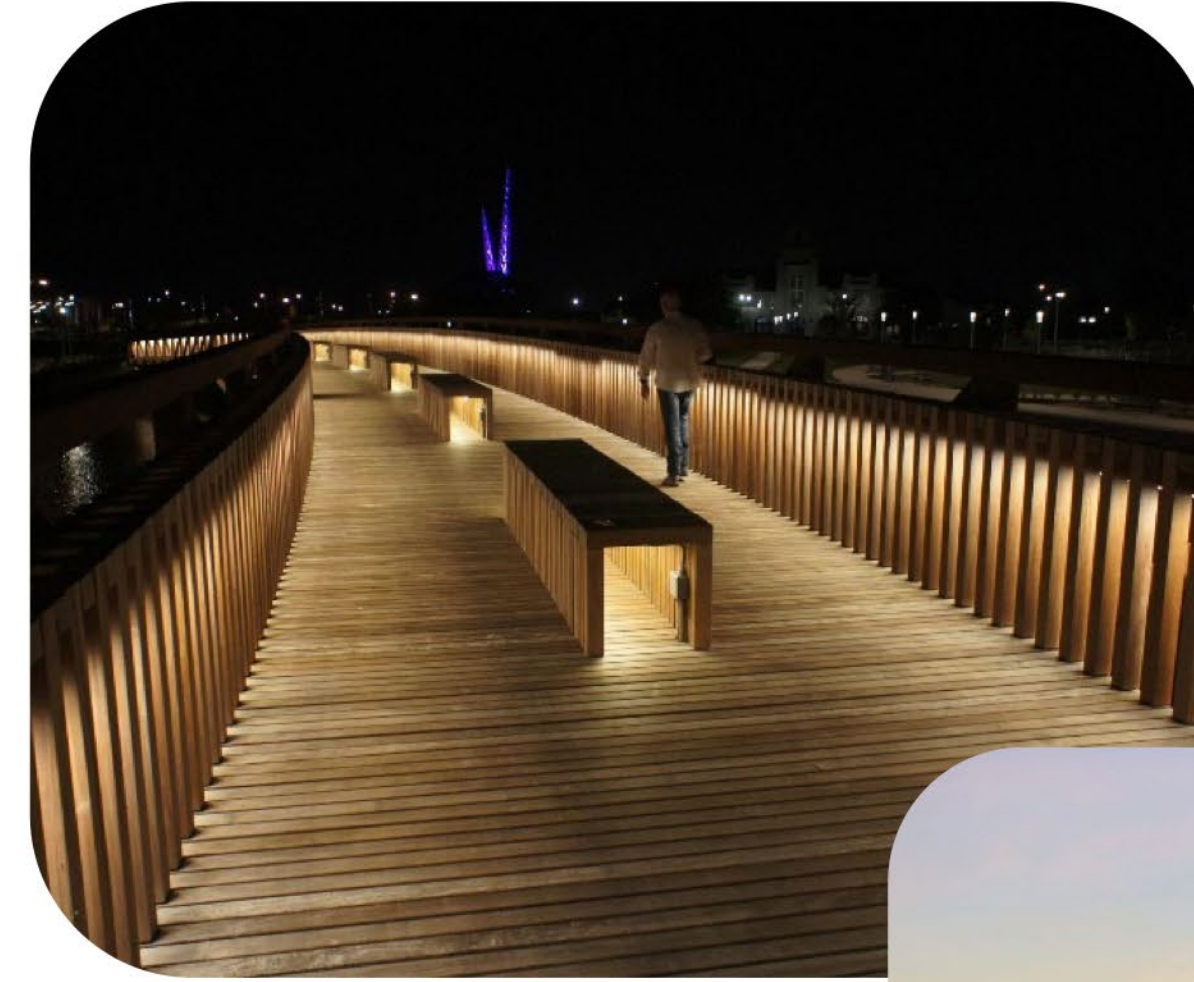
Open Air Nature Pavilion

Stage

Precedents



Picnic Pavilion



Bridge

Precedents

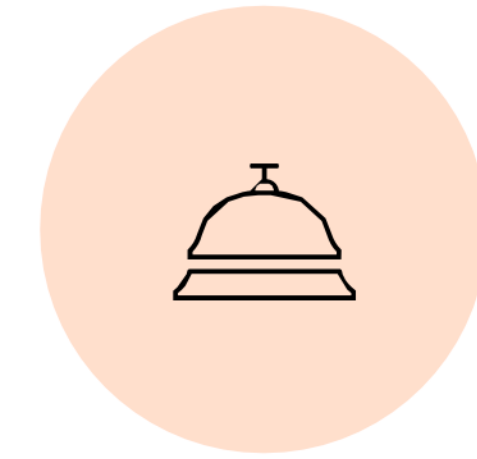


Play

All Seasons

Value Capture & River Reach

The market analysis suggests three development scenarios that could be a successful use of the commercial site. Each targets a different audience and could inform the brand of the park space.



Development Concept:

Active Senior Living

Young Professionals Complex

Niche Hospitality

Building Program:

- Multifamily development with smaller unit sizes and amenity spaces geared towards seniors
- Amenity retail accessible to residents and park visitors, including daily grocery needs, restaurant, recreational retail aligned with park program

- Multifamily development offering amenities and smaller unit sizes to attract young professionals
- Amenity retail/food and beverage targeted to young professionals, recreational retail aligned with park program

- Hotel catering to leisure travel, potentially including event space
- Amenity retail/food and beverage
- Recreational retail aligned with park program,

Implications for Park Program:

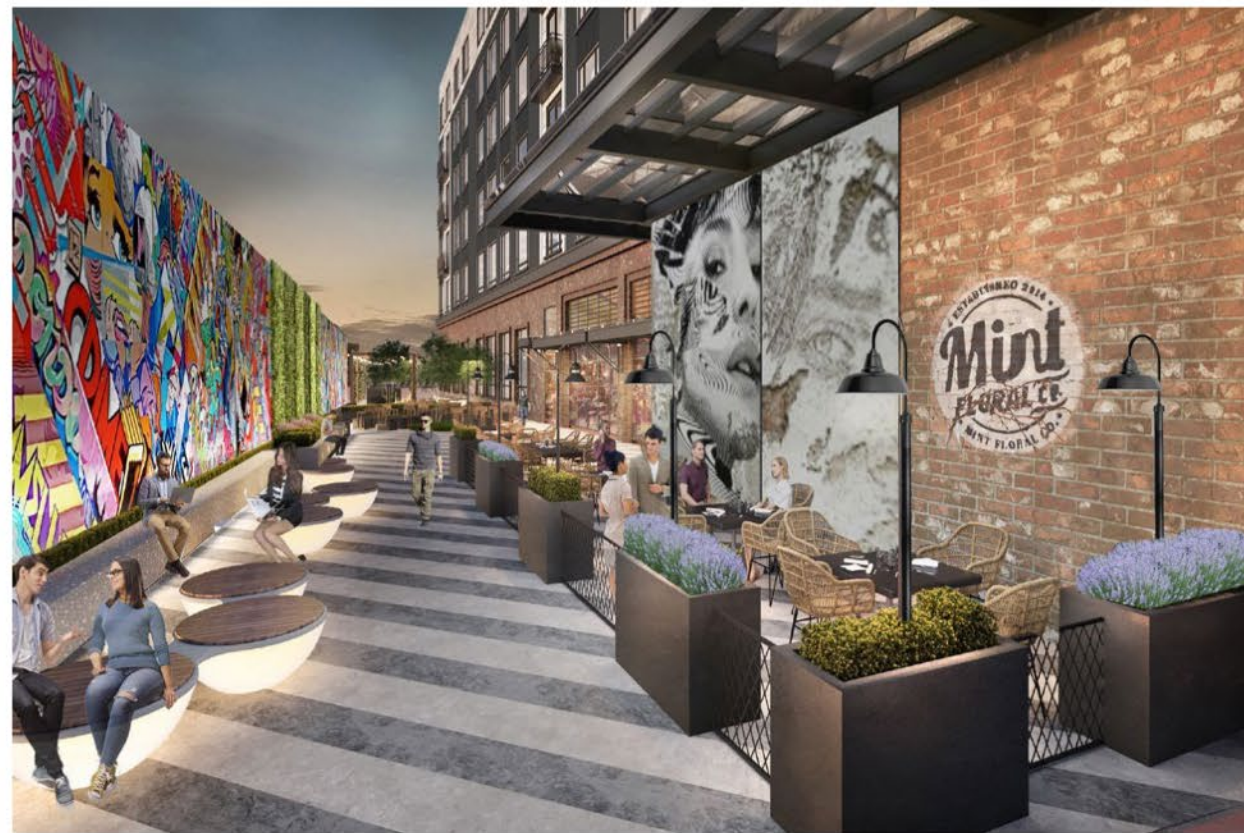
Age-inclusive park programming and marketing

Similar to Active Senior Living; may be distinguished by level of activity, types of events

Park design and site planning accommodate hotel uses while remaining public

Residential Concept

A development dominated by residential could be catered towards young professionals, active-seniors, or both. The program would also include resident-serving retail.



The Highrailer
Under Construction
New Britain, CT

**River's Edge at River
Spring Campus**
Under Construction, Life Plan Community
Riverdale, NY

Niche Hospitality Concept

A niche hospitality concept would include a hotel catering to leisure and recreational travel, potentially including event space, resident-serving and recreational retail, and a smaller residential component.



Tourists
West Adams, MA

Community-Oriented Uses



Ground floor uses that provide FREE experiences. Co-working spaces, pop up art spaces, food pantry, meeting/event rooms, bike rental shop, book store, art making studio, nature/plants store + cafe, pop up markets, recreational equipment rental store



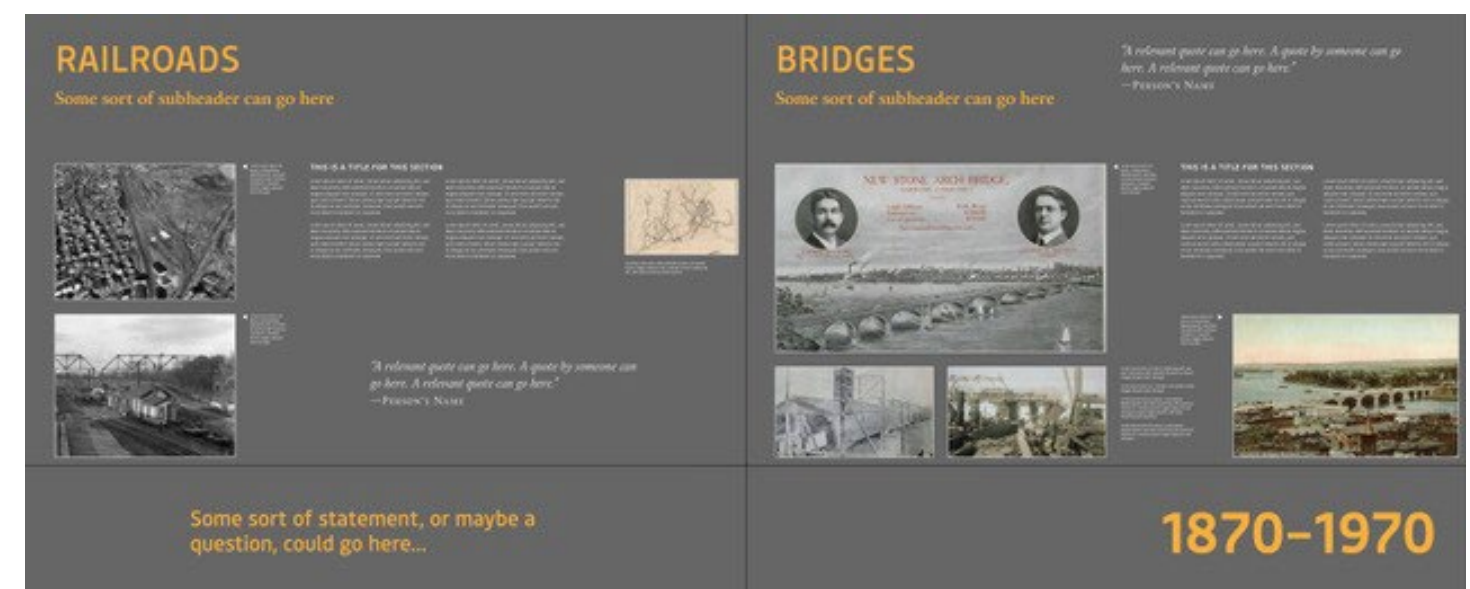
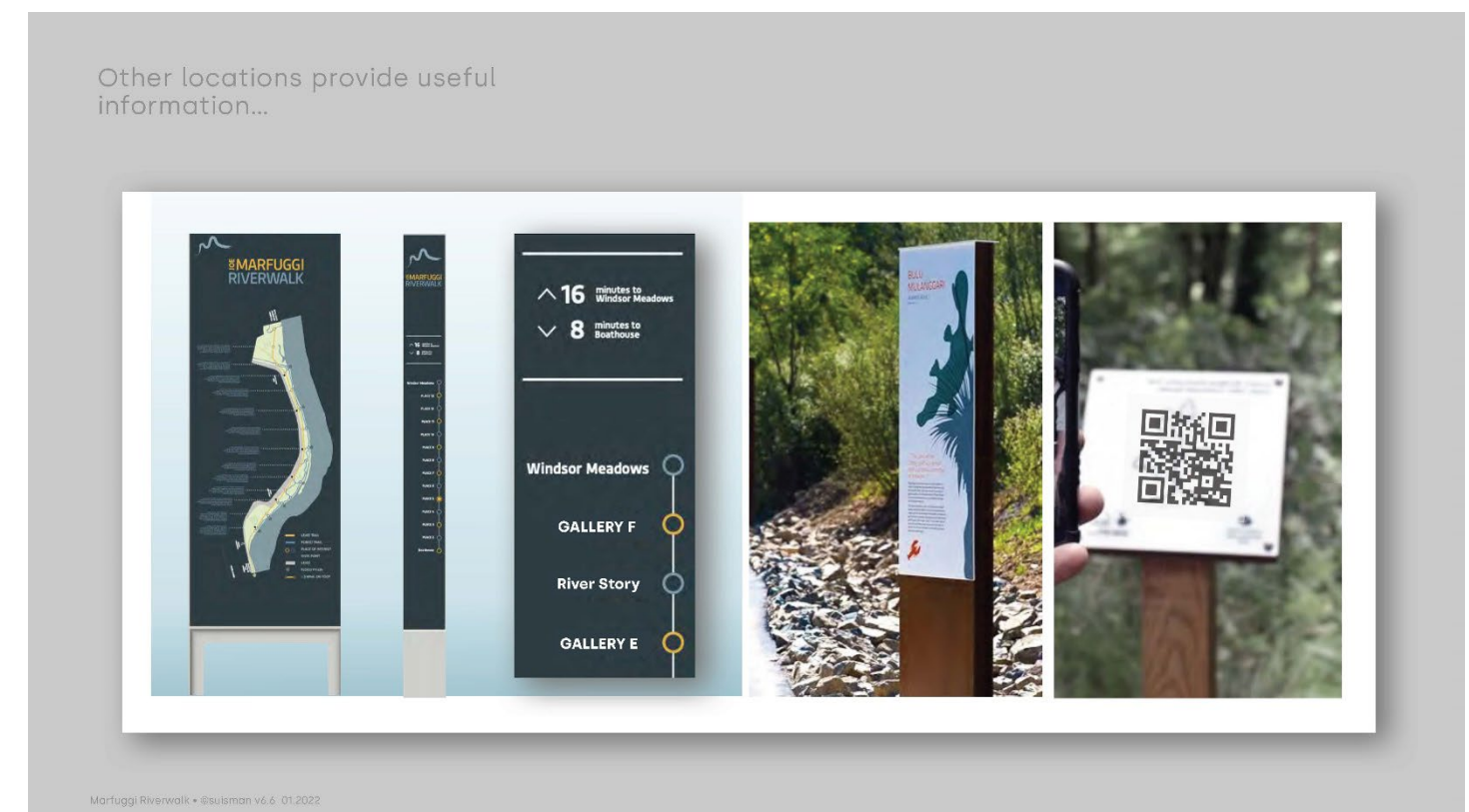
Joe Marfuggi Riverwalk

Project status: Final design and permits

Funding: State of CT DOT TAP grant to City of Hartford, City match

Project cost: \$4,200,000

Project elements: 2.5 mile Riverwalk extension from Boathouse to Windsor





MODEL

187

INFRASTRUCTURE

FLOOD WALLS

Some sort of statement, or maybe a question, could go here...

Riverfront Park Visitor Counting Pilot Program

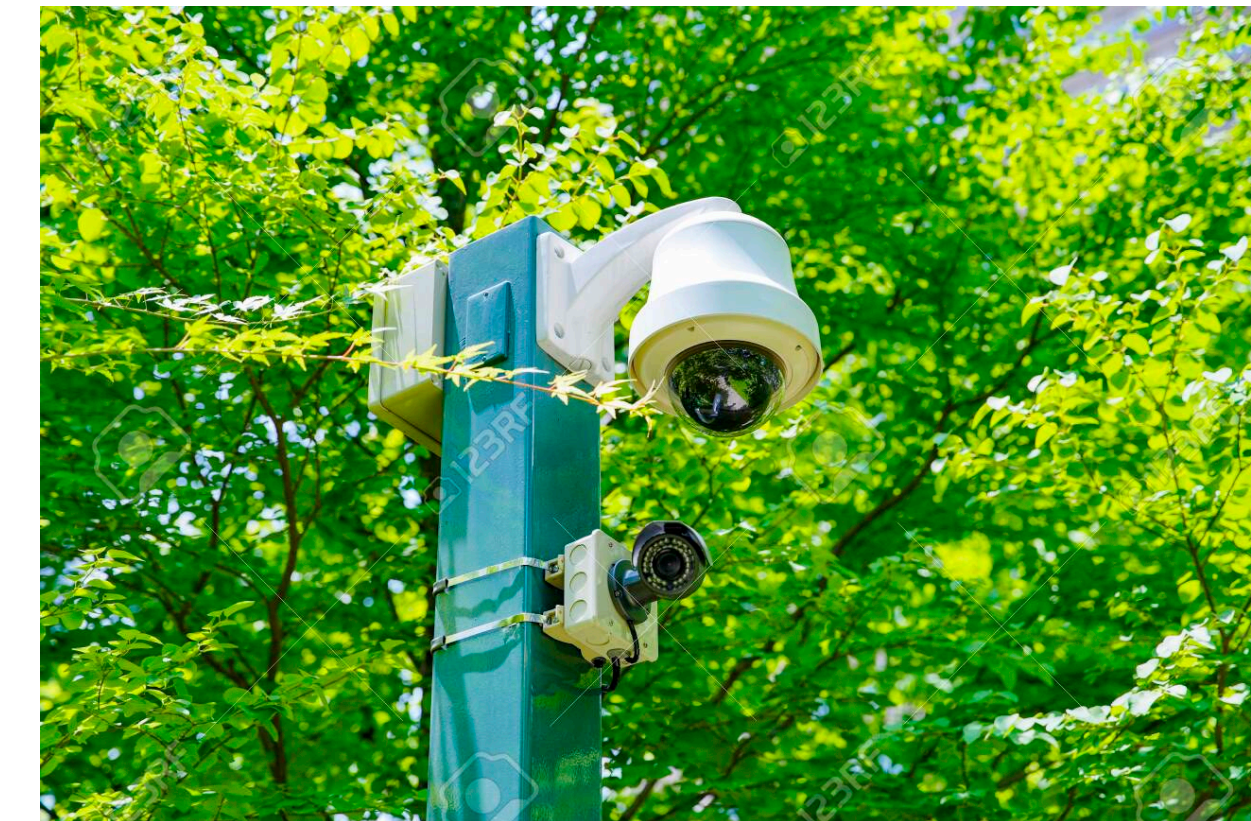
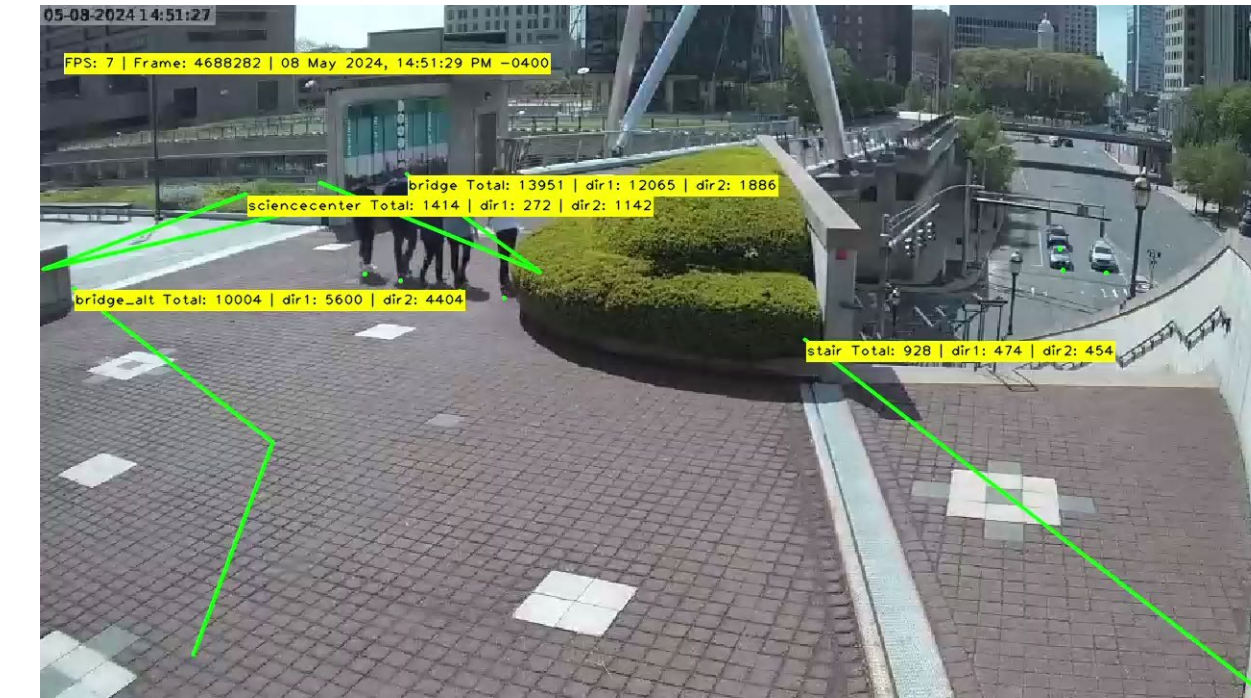
Project status: Nearing conclusion

Timeline: Summer 2024

Funding: CT Recreational Trails Grant

Project cost: \$116,807

Project elements: Park camera installation
Installation of software capable of counting park visitors



dashboards

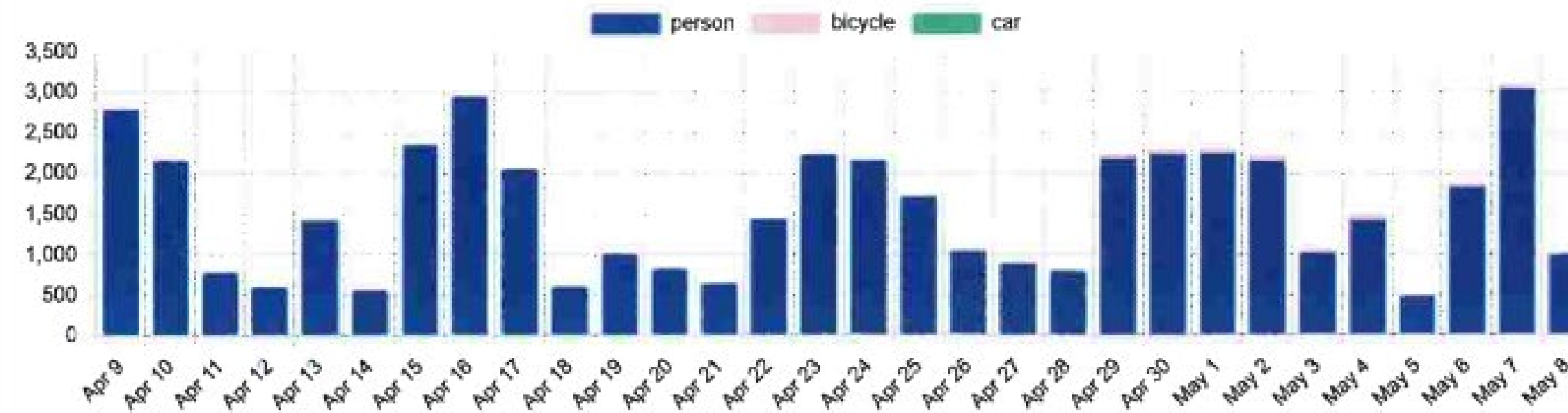
Video Wall

RiverFront

Last 30 days April 9, 2024 - May 8, 2024 (GMT-4:00) EDT

+ Add widget Edit layout

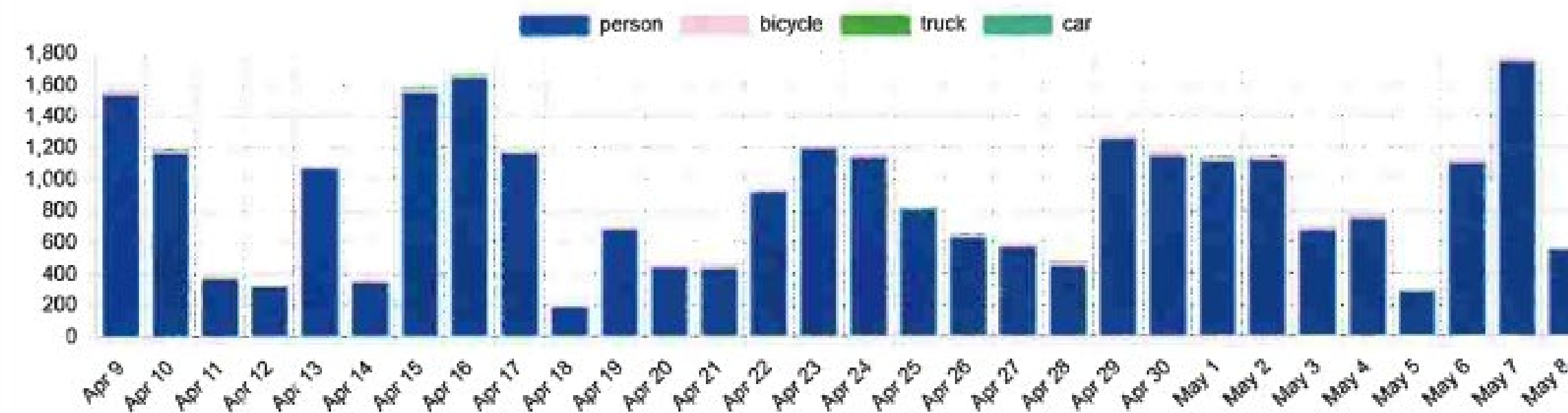
Columbus Blvd Plaza Entrance Point



Total Count Columbus Blvd Plaza Entrance Point

47030

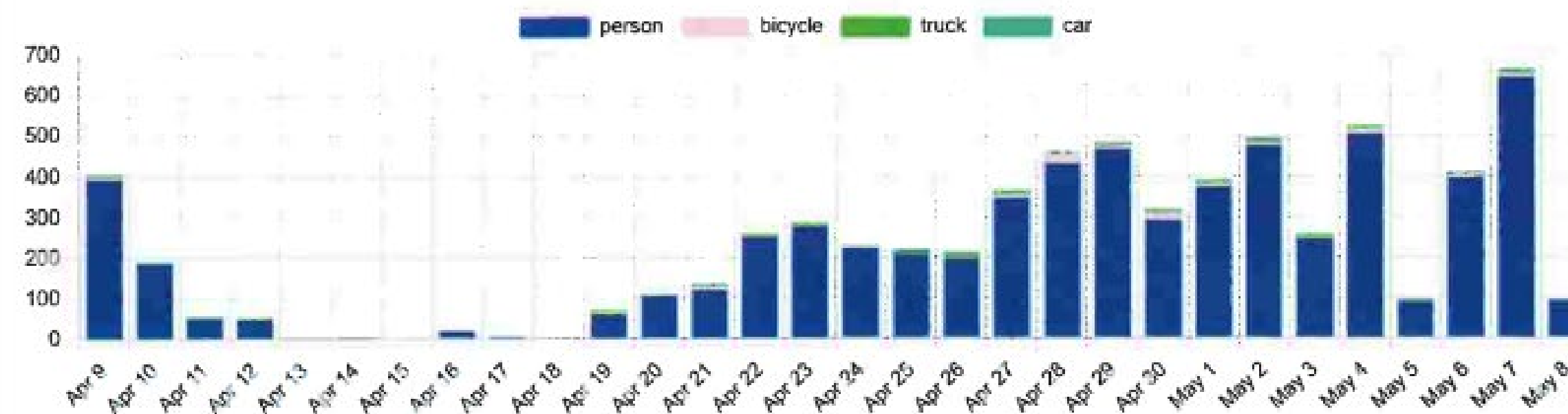
Founders Bridge Walkway



Total Count Founders Bridge Walkway

26927

Hartford Riverwalk under Founders Bridge



Total Count Hartford Riverwalk under Founders Bridge

6813

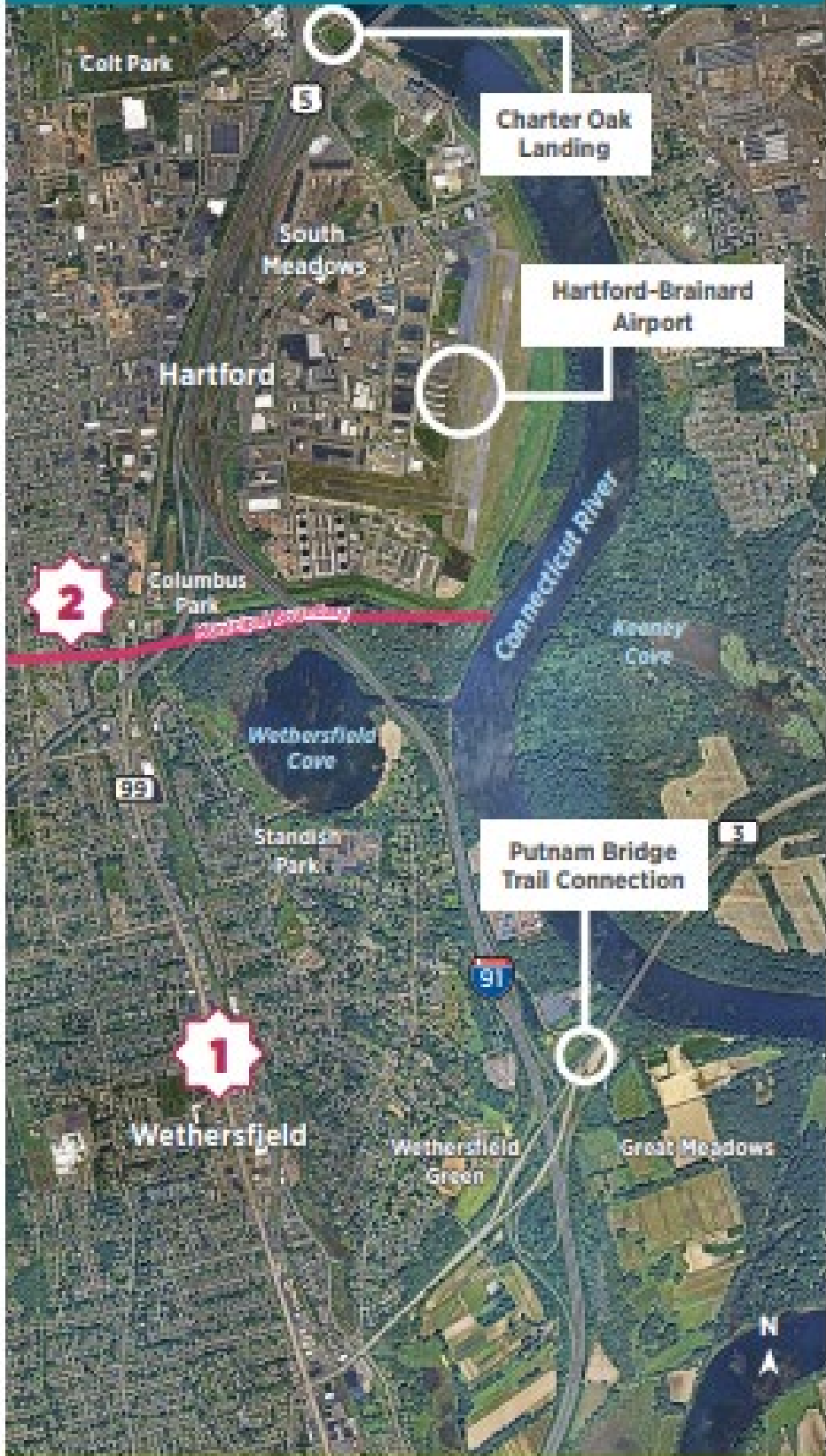


Mortensen Riverfront Plaza Elevator Replacement & Electrical

- Project status: Contract development
- Timeline: Late 2024 work
- Funding: City of Hartford
Recreational Grant
- Project cost: \$1,000,000
- Project elements: Replacement of two elevators
to insure ADA accessibility
Replacement of electrical system



PUBLIC MEETING



1 Public Meeting #1:
 Wednesday | May 22, 2024 | 6 PM
 Town of Wethersfield Town Council Chambers
 505 Silas Deane Highway, Wethersfield, CT

2 Public Meeting #2:
 Thursday | May 30, 2024 | 6 PM
 Metzner Recreation Center
 680 Franklin Ave, Hartford, CT

The same information will be presented at the Wethersfield and Hartford meetings. There is no need to attend both meetings.

Hartford to Wethersfield

Multimodal Trail Routing Study

STUDY PURPOSE

Study/Recommend a trail route connection between **Charter Oak Landing (Hartford)** and the **Putnam Bridge (Wethersfield)**

STUDY GOALS

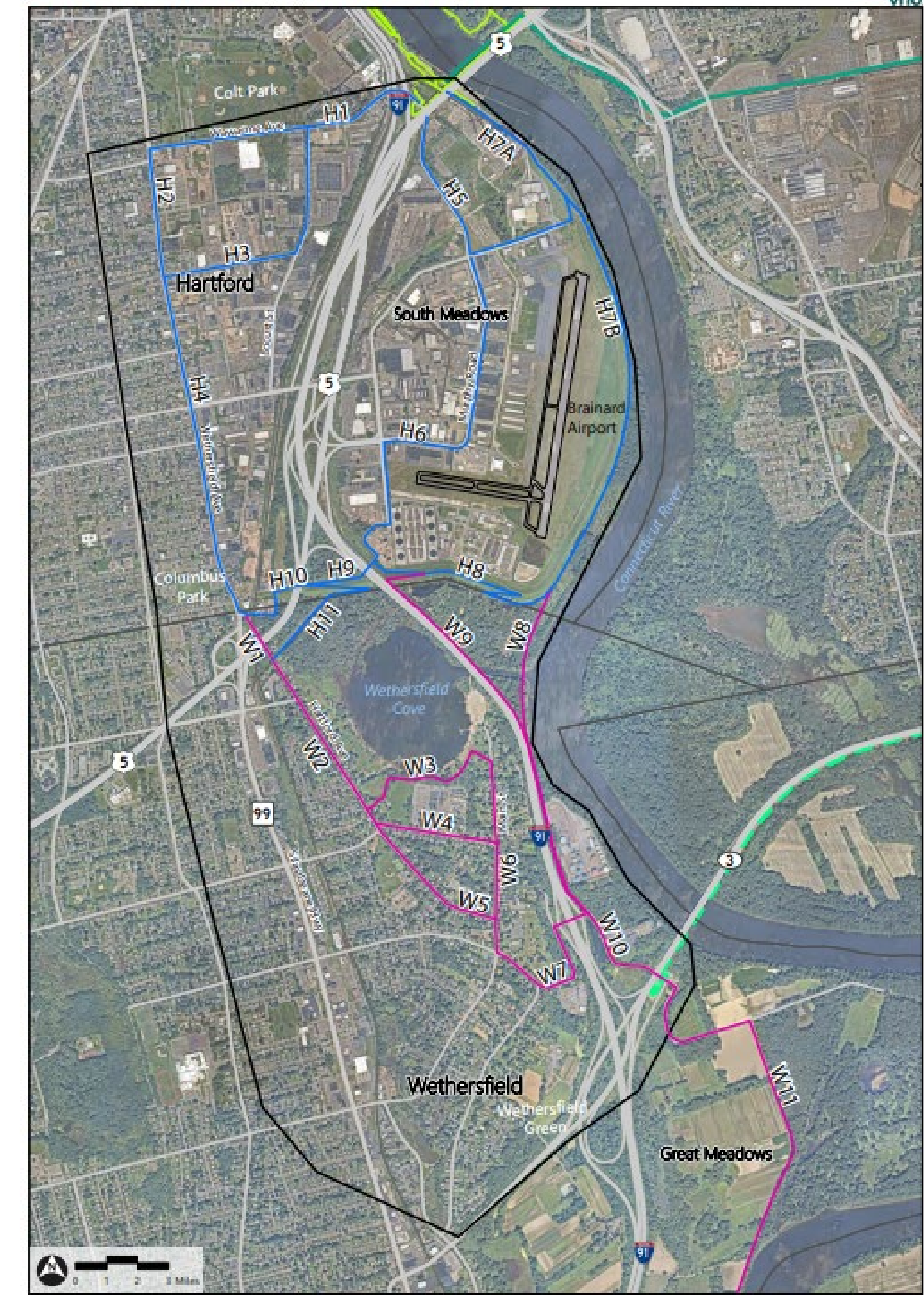
- Review potential routes for making the connection between Charter Oak Landing and the Putnam Bridge, and determine the preferred route
- Support efforts to create an increasingly interconnected Capital region
- Incorporate input from the community
- Present the trail alignment to be successful in leveraging future funding opportunities



Study Sponsors
 Town of Wethersfield
 City of Hartford
 Riverfront Recapture

Consultant
 VHB
 100 Great Meadow Road
 Suite 200
 Wethersfield, CT 06109

Figure 2: Potential Trail Routing Segments for Review
 Hartford-Wethersfield Multimodal Trail Routing Study | Hartford and Wethersfield, CT



Study Area	Railroads	Potential Trail Segments
East Coast Greenway	Town Boundaries	Hartford Segments
Riverfront Trails		Wethersfield Segments
Putnam Bridge Trail, to be completed April 2024		

