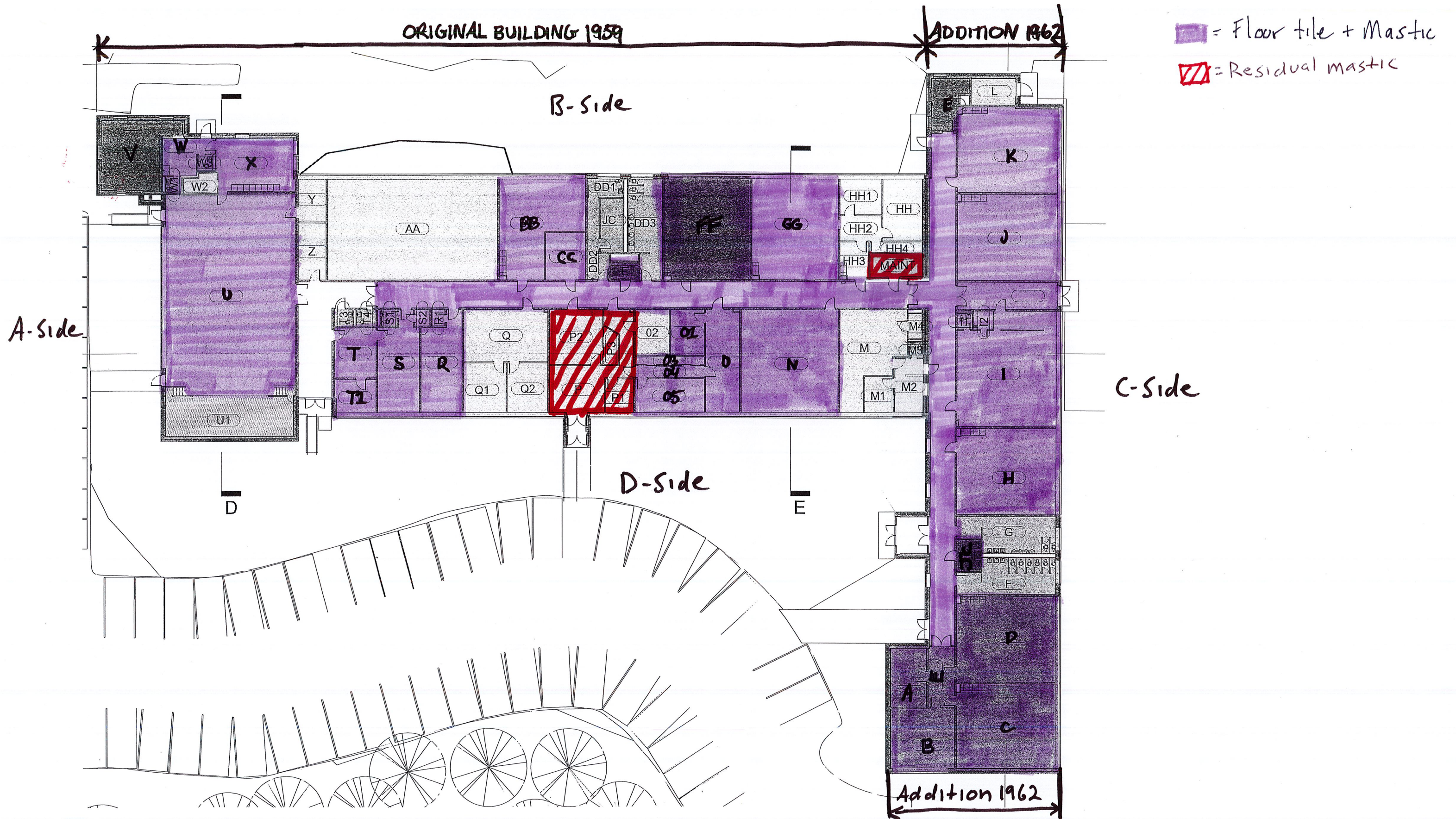


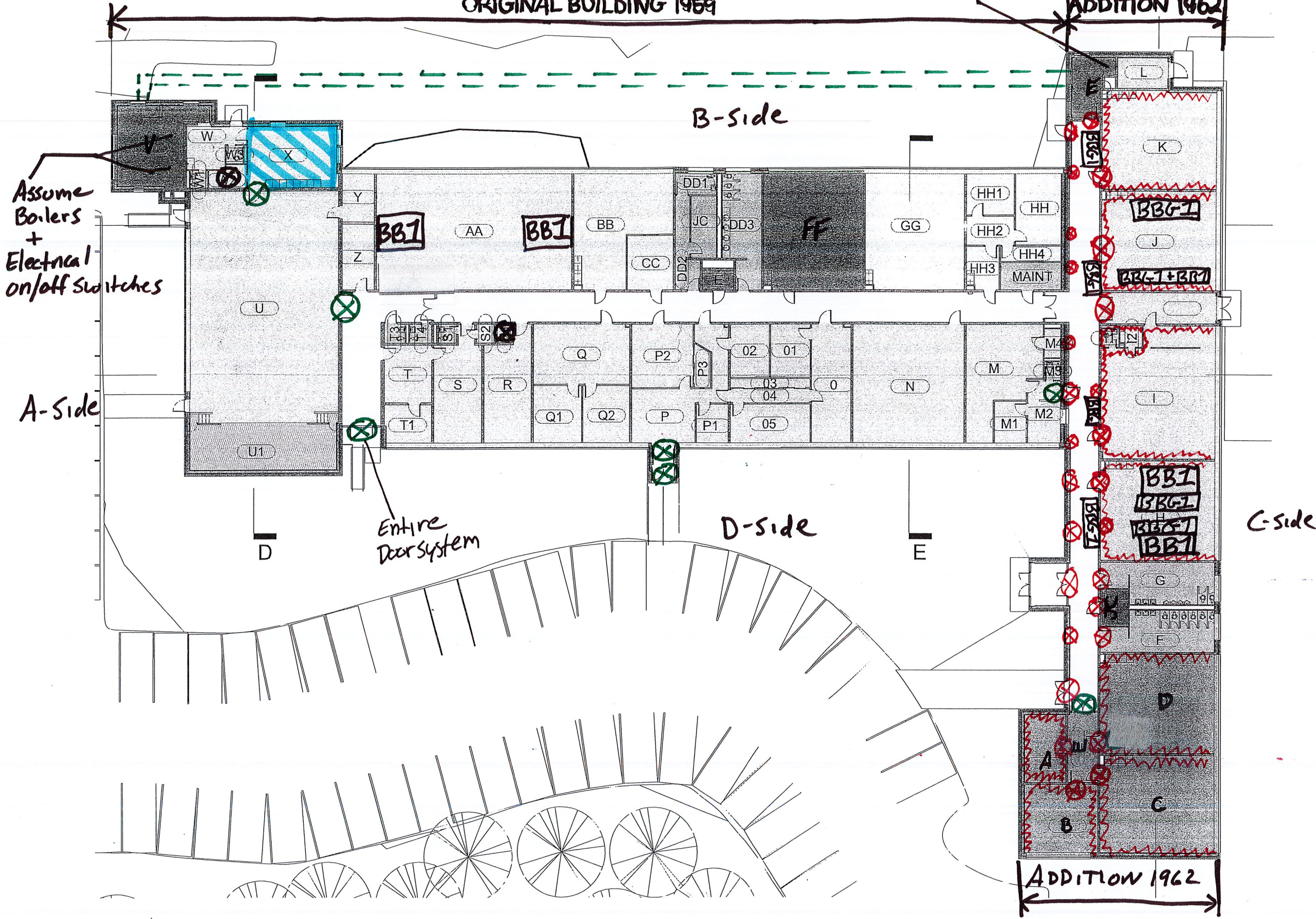
# Asbestos Locations



# Asbestos Locations

ORIGINAL BUILDING 1959

Assume "Destructor"  
and Electrical on/off switches  
ADDITION 1962



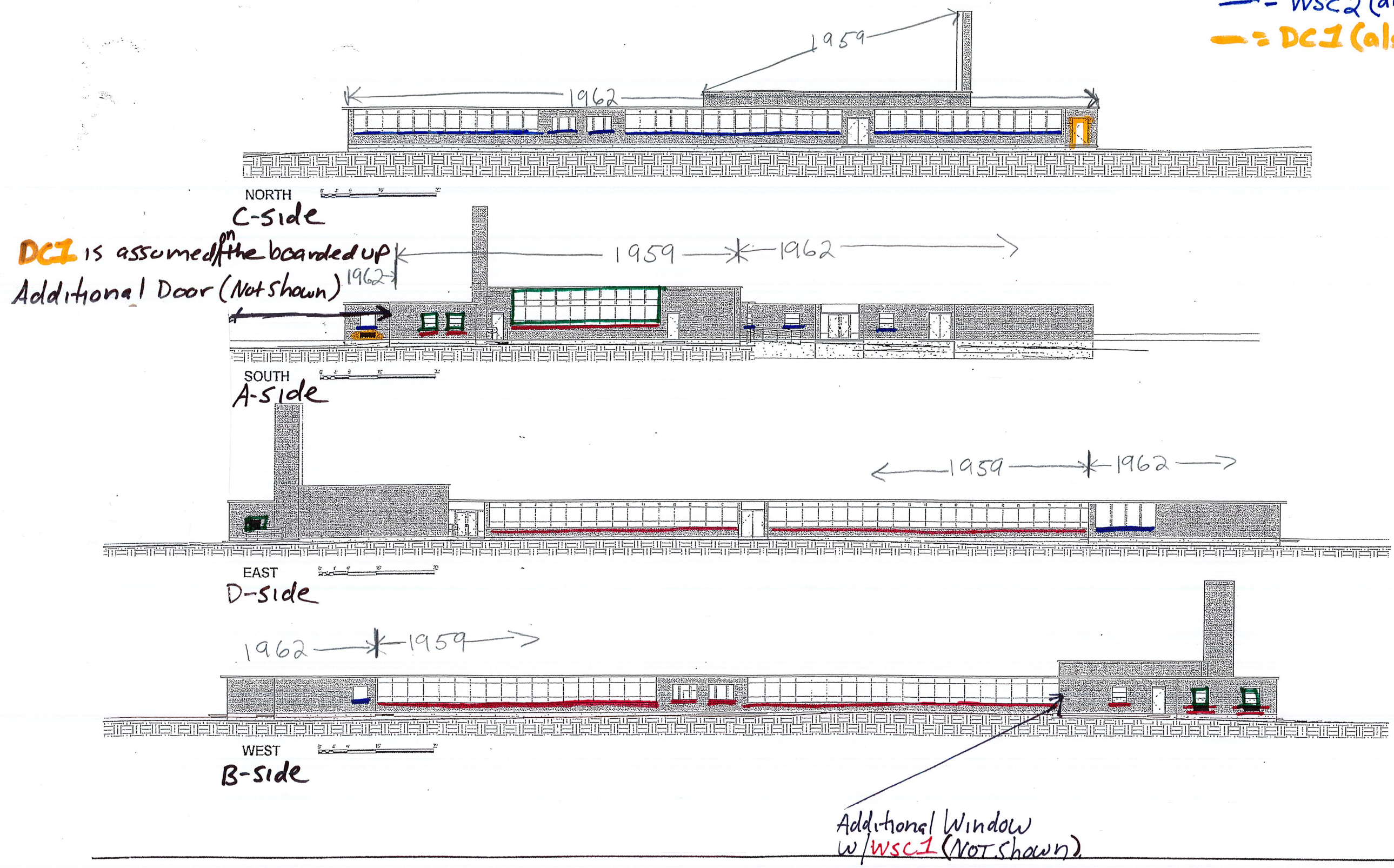
- \* = C2 at top of Wall
- ⊗ = C2 in Expansion Joints
- ⊗ = DWG 1,2,4
- ⊗ = LP1
- ▧ = GD1
- = Assumed buried Pipe insulation
- ▭ = BB1 blackboard glue Dubs
- ▭ = BBG-1 Brown Bulletin Board glue

Note:  
Asbestos Pipe Insulations (PI1, PI2) and associated mudded fittings (MF1) are not shown on the Drawing. They are present above ceilings, in wet walls and chases throughout the 1959 Wing.

\* = C2 is also CT DEEP PCB

# Asbestos Locations

- = WC2
- = WSC1
- = WSC2 (also CTDEEP PCB)
- = DC1 (also CTDEEP PCB)



# Asbestos Locations

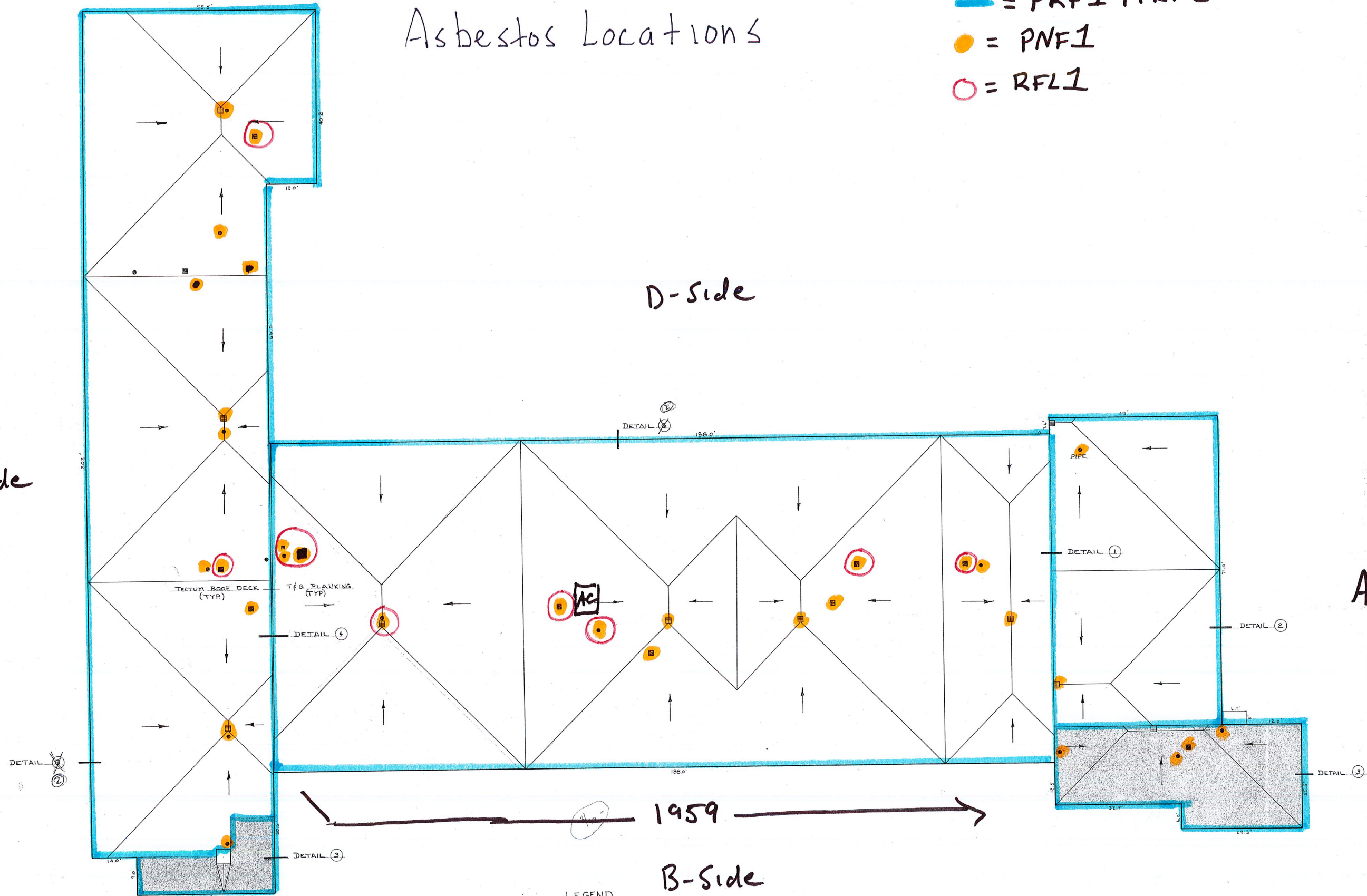
- = PRF1 + PRF2
- = PNF1
- = RFL1

C-Side

D-Side

A-Side

B-Side



- LEGEND**
- ROOF DRAINS
  - VENTS
  - FANS
  - CONC. ROOF DECK

27,767 sq ft

TOWN OF EAST HARTFORD  
ENGINEERING DIVISION  
MCCARTIN SCHOOL  
ROOF PLAN  
NOVEMBER 1983

ACM4

# CT DEEP Regulated PCB Containing Materials

ORIGINAL BUILDING 1959

ADDITION 1962

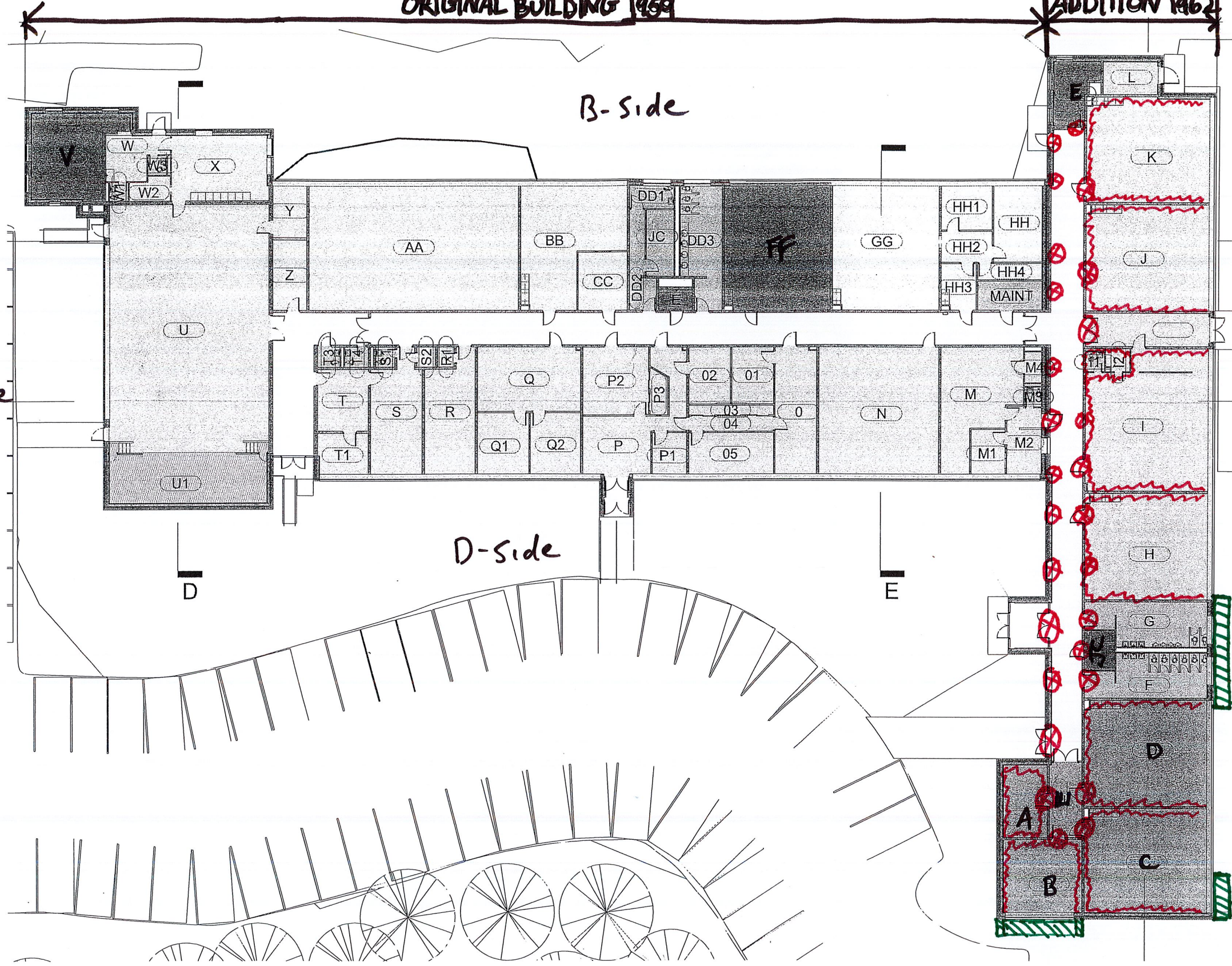
~ = C2 at top of wall (Also AcM)  
⊗ = C2 in Expansion Joints (Also AcM)  
▨ = PCB impacted Soil

B-Side

C-Side

A-Side

D-Side

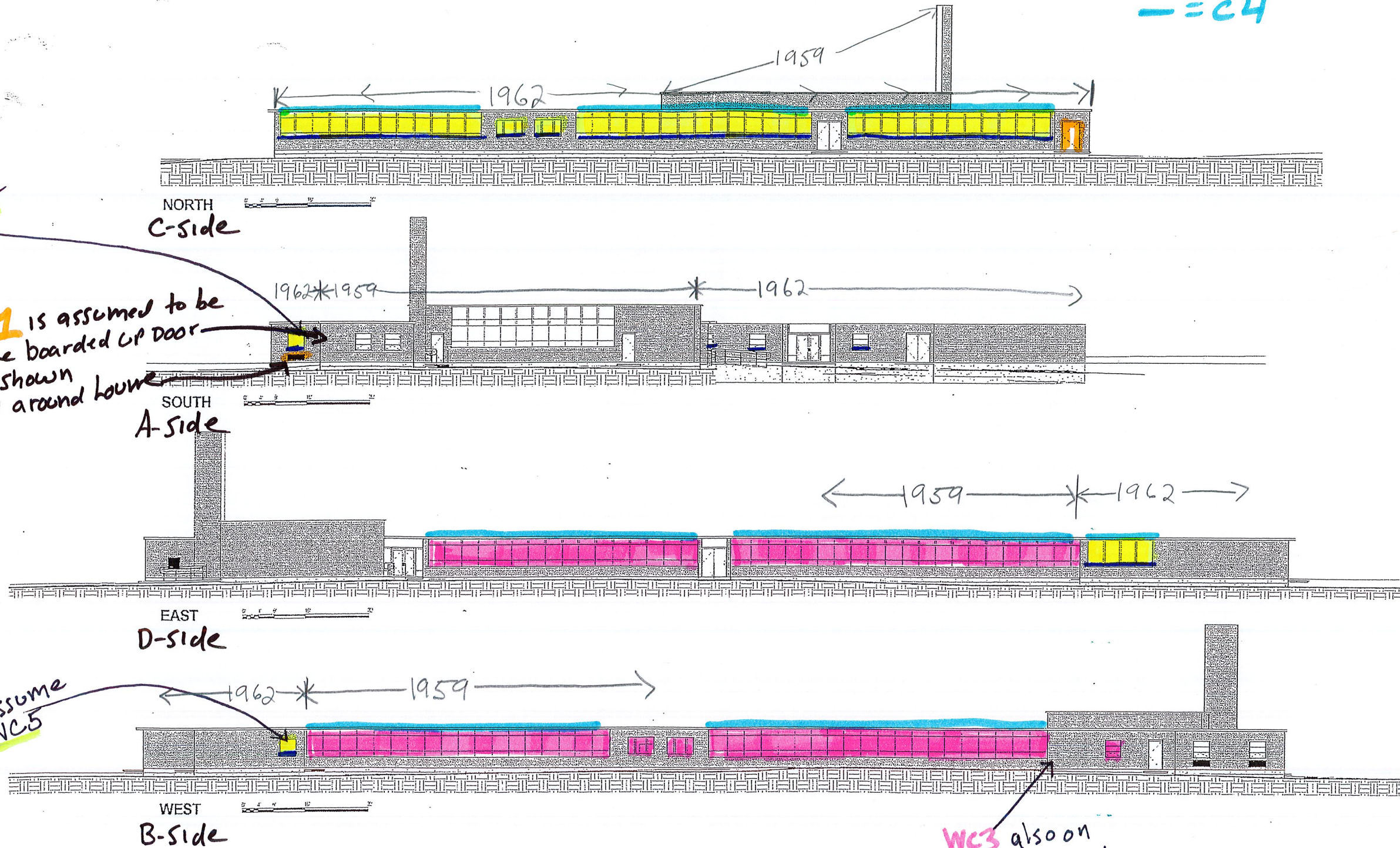


# CT DEEP Regulated PCB Containing Materials

- = DC1 (Also ACM)
- = WSC2 (Also ACM)
- = WC3
- = WC5
- = C4

Assume WC5

DC1 is assumed to be on the boarded up door and around lower



WC3 also on Window Notshown