

December 11, 2024

Addendum 1

East Hartford McCartin School Abatement & Demolition

CRDA Project #24-027

This addendum dated December 11, 2024, forms a part of the Contract Documents and modifies the original bidding documents. Please acknowledge receipt of this Addendum when you submit your bid. Failure to do so may subject the submitter to disqualification.

Q&A:

1. Will the Town of EH or CRDA be preparing an AWP for the asbestos containing gross debris cleanup? **RESPONSE: Yes**
2. Are the playgrounds to remain north of the school? **RESPONSE: Applicable to both playgrounds; demolish all playground equipment, including footings and play surfaces, curbs, and misc. accessories. Restore fin grade with topsoil/hydroseed, slope for positive drainage.**



3. Please confirm power is terminated as the primaries are removed of all wire and it appears the pole feeding them has been severed. If so, can you provide a letter of disconnect from Eversource?
RESPONSE: Power has not yet been terminated. The demolition contractor shall be responsible for termination. The Town will provide a letter requesting that the service be disconnected. The demolition contractor shall provide their own source of temporary power and shall not re-energize the existing electrical system. Temporary power shall be either from a temporary service from Eversource or by generators. If temporary power is by generators, the Town of East Hartford's noise ordinance shall not be violated. The noise ordinance in East Hartford, Connecticut limits the volume of sound amplifying equipment that can be operated in public or private: daytime: no more than 55 decibels (dba)nighttime: no more than 45 dba these limits are measured from outside the property where the sound is coming from. See attached
4. Has the Town of EH or CRDA obtained historic approval for demolition prior to issuing this RFP?
RESPONSE: Yes
5. The RFP states that crushing will not be allowed at the site. We ask that you reconsider.
RESPONSE: Crushing will NOT be permitted on site.
6. Can you please give us clarification/quantity of the cubic yardage of PCB contaminated soils that need to be removed?
RESPONSE: Assume 12 cubic yards per base bid – see page 5 of hand marked PCB locations. Also, provide a per cubic yard unit price.
7. Would it be possible to arrange another walkthrough for the McCartin School in East Hartford? We were hoping to have our MBE/WBE subs look at the site.
RESPONSE: Unfortunately, we are unable to schedule any additional walkthrough.
8. Has the Water and Sewer been disconnected to the building and site?
RESPONSE: Water and sewer are still connected to the building. A valve on the water service was closed last winter to prevent flooding in the building. ToEH & Awarded Contractor need to start the disconnect process with MDC.
9. Will the bid date be extended?
RESPONSE: The bid date is being extended to January 7, 2025, at 1PM.
10. There was a Septic Tank Discovered at the site and we need to know if the Septic Tank is specified to be removed and if so we need to know the size of the Tank and if there is any Product in the Tank.
RESPONSE: Septic Tank is to be removed with the distribution box, the manhole and any connecting piping. See attached drawing C201 and note G3.05. The size of the tank is not known. If there is any wastewater in the septic tank, it should be removed by a septic hauler before the tank is removed.
11. For Abatement Process Would there be water and sewer available, or at least sewer?
RESPONSE: A demolition permit is typically issued only after all utilities are disconnected; however, it is up to the prime contractor to coordinate the disconnection of sewer and water in accordance with the abatement and actual demolition schedule.

Updated Timeline:

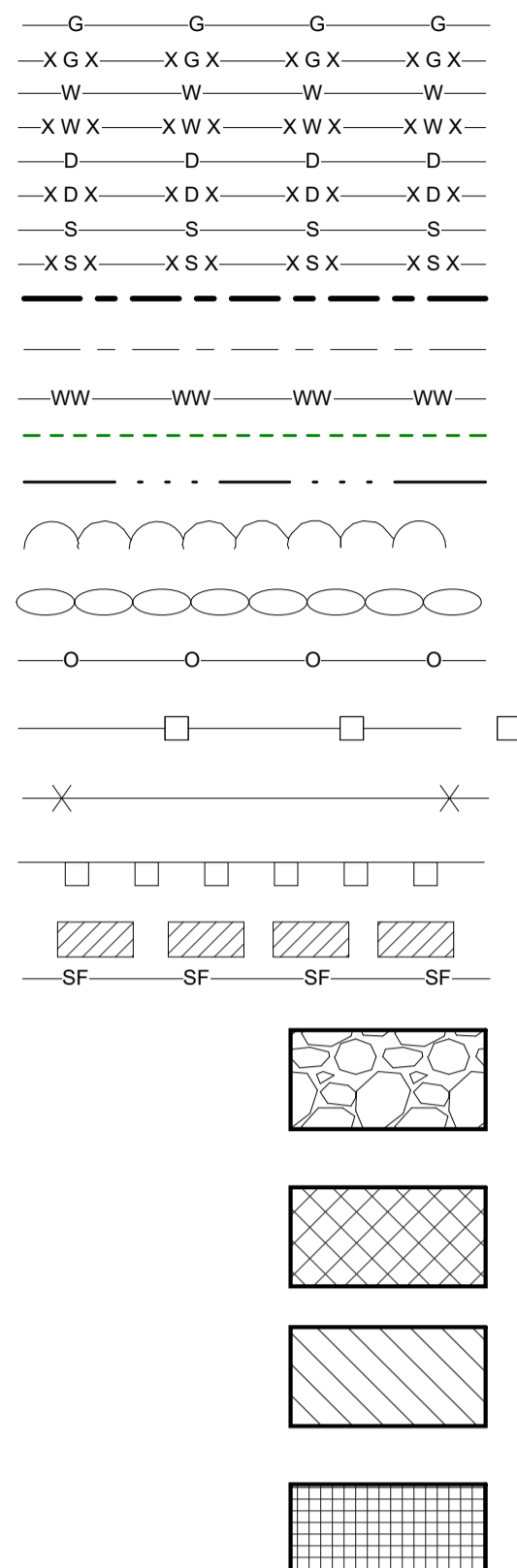
Documents Available	11/18/24	
Mandatory Pre-Bid Conference	11/26/24	10:00 AM
Last Day for Questions	12/17/24	3:00 PM
Last Addendum	12/23/24	
Bids Due (Bid Opening)	1/07/25	1:00 PM
Scope Reviews	1/10/25	
Contract Award	1/17/25	
Start Construction	1/27/25	

Attached:

- Revised C201
- Section 13-56 Noise Ordinance
- Prevailing Wage Rates
- Pre-Bid Sign in Sheet

End of Addendum 1

GRAPHIC LEGEND

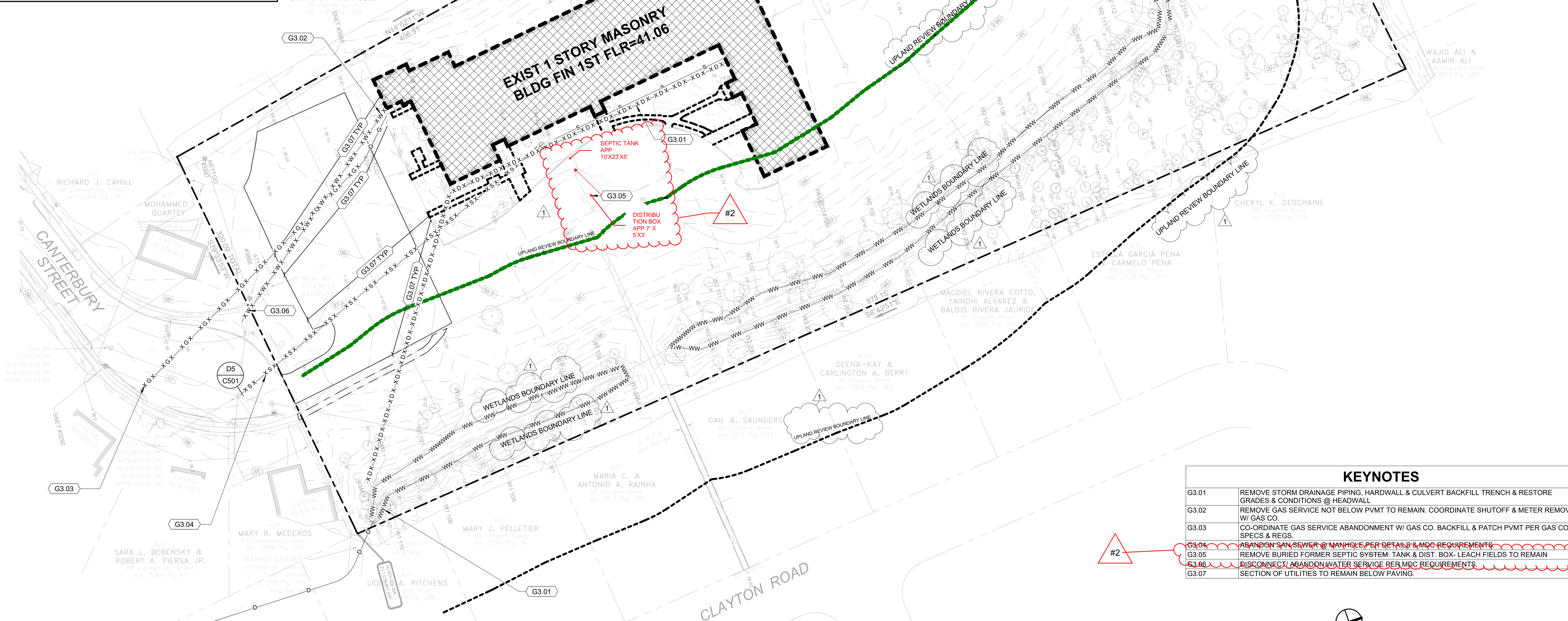


ABBREVIATIONS

- MONUMENT (MON)
- IRON PIN (IP)
- IRON ROD (IR)
- FLAG POLE (FP)
- MAILBOX
- SIGN
- UTILITY POLE
- UTILITY POLE WITH LIGHT
- CATCH BASIN (CB)
- SEWER MANHOLE
- DRAINAGE MANHOLE
- WATER MANHOLE
- OTHER MANHOLE (MH)
- WATER GATE VALVE (WG)
- GAS METER
- HYDRANT (HYD)
- WETLAND FLAG (WF)
- N/F NOW OR FORMERLY
- CONC CONCRETE
- BIT BITUMINOUS
- AG ABOVE GRADE
- BG BELOW GRADE
- TF TOP OF FRAME (ELEVATION)
- INV INVERT (ELEVATION)
- RCP REINFORCED CONCRETE PIPE
- CI CAST IRON PIPE
- STKF STOCKADE FENCE
- CLF CHAIN LINK FENCE
- 8" T. 8" TWIN-STEM TREE
- 8" M. 8" MULTI-STEM TREE

DEMOLISHED UTILITY LINES ARE EITHER REMOVED OR ABANDONED
SEE DRAWING AND GENERAL NOTES

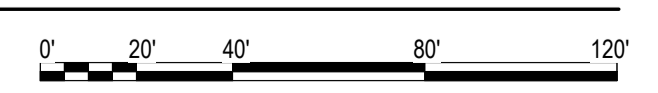
D
C
B
A



A5 SITE UTILITY
1" = 40'-0"

KEYNOTES

G3.01	REMOVE STORM DRAINAGE PIPING, HARDWALL & CULVERT BACKFILL TRENCH & RESTORE GRADES & CONDITIONS @ HEADWALL
G3.02	REMOVE GAS SERVICE NOT BELOW PVMT TO REMAIN. COORDINATE SHUTOFF & METER REMOVAL W/ GAS CO.
G3.03	CO-ORDINATE GAS SERVICE ABANDONMENT W/ GAS CO. BACKFILL & PATCH PVMT PER GAS CO. SPECS & REGS.
G3.04	ABANDON SAN SEWER @ MANHOLE PER DETAILS & MDC REQUIREMENTS
G3.05	REMOVE BURIED FORMER SEPTIC SYSTEM- TANK & DIST. BOX- LEACH FIELDS TO REMAIN
G3.06	DISCONNECT/ABANDON WATER SERVICE PER MDC REQUIREMENTS
G3.07	SECTION OF UTILITIES TO REMAIN BELOW PAVING.



OWNER
CRDA Capital Region Development Authority

ARCHITECT
CWA
CHRISTOPHER WILLIAMS ARCHITECTS, LLC
85 Willow Street New Haven, CT 06511
203 776 0184 www.cwarchitectsllc.com

ENGINEERS

CIVIL ENGINEERS

CONSTRUCTION DOCUMENTS
10/31/23 REVISION 2-12/10/24

MCCARTIN CENTER
70 CANTERBURY ST
EAST HARTFORD, CT 06118

MARK	DATE	DESCRIPTION
2	12/10/24	REV SEPTIC SYSTEM REMOVAL
1	11/10/2023	Inland Wetlands Comments
3		

PROJECT NO.:
CWA PROJECT NO.: 2311
DRAWN BY: Author
CHK'D BY: Checker
COPYRIGHT

SHEET TITLE
SITE UTILITY PLAN

C201

Sec. 13-56 Appeals Process.

Any person accused of violating any provision of this article shall have the right to appeal from any fines imposed which right, in order to be exercised prior to the matter's referral to the State Superior Court for enforcement, must be exercised within ten (10) days of the date of written notice by the Town sent to the alleged violator. When an appeal is timely received by the office of the Town Clerk, a hearing shall be scheduled before a hearing officer who shall be designated by the Mayor, which officer shall not be a member of the town Police Department. Said officer shall conduct said hearing according to the procedures of the State Uniform Administrative Procedure Act, Connecticut General Statutes, Section 14-166 et. seq.

ARTICLE 7. Control of Noise Pollution Emitted by Sound Amplifying Equipment

Section 13-57. Purpose

The Town Council of the Town of East Hartford hereby finds and declares that excessive noise created by sound amplifying equipment such as radios, cassette recorders/players, compact disc players, television receivers, and instruments pose a serious hazard to the health, welfare and quality of life of East Hartford's residents. It also finds that excessive noise can inflict psychological and economic damage to persons submitted to such noise, and that such noise should be abated so that residents of the Town may enjoy an environment free from excessive noises which may jeopardize their health and welfare.

Section 13-58. Definitions.

For the purposes of this Ordinance, the following definitions shall apply:

- (a) "Background Noise" shall mean noise which exists at a point as a result of the combination of many distant sources which are not distinguishable from other sources regulated pursuant to Conn.Gen.Stat. § 22a-69.
- (b) "Daytime Hours" shall mean the hours of the day which are not nighttime hours.
- (c) "Nighttime Hours" shall mean the following:
 - 9:00 p.m. Sunday through 7:00 a.m. on Monday
 - 9:00 p.m. Monday through 7:00 a.m. on Tuesday
 - 9:00 p.m. Tuesday through 7:00 a.m. on Wednesday
 - 9:00 p.m. Wednesday through 7:00 a.m. on Thursday
 - 9:00 p.m. Thursday through 7:00 a.m. on Friday
 - 10:00 p.m. Friday through 9:00 a.m. on Saturday
 - 10:00 p.m. Saturday through 9:00 a.m. on Sunday
- (d) "Decibel" (dB) is a unit of measurement of a sound level.

(e) "Sound" is a transmission of energy through solid, liquid or gaseous media in the form of vibrations which constitute alterations in pressure or position of the particles in the medium and which, in air, evoke physiological sensations including, but not limited to, an auditory response when impinging upon an ear. For the purposes of measuring such sound, the A scale (dBA) as specified in ANSI Specifications for Sound-Level meters, S1.4 – 1971 as revised, shall be used.

(f) "Sound Amplifying Equipment" is any machine or device used to amplify the human voice, music or any other sound. Sound amplifying equipment or devices, as used in this ordinance, does not include warning devices used on emergency vehicles or horns or other warning devices on any vehicle used only for traffic safety purposes.

Section 13-59. Prohibitions.

(a) No person shall operate in public or in private any sound amplifying equipment at a level above fifty-five (dBA) during daytime hours, or forty-five (dBA) during nighttime hours as measured from a point outside the property from which the sound originated unless the noise created by such sound amplifying equipment registers not more than five (dBA) higher than the background noise, provided that no source subject to the provisions of this section shall emit noise in excess of eighty (dBA) at any time.

Section 13-60. Exemptions

The following activities shall be exempt from the provisions of this Ordinance:

- (a) Noise created by emergency activities authorized by State or local governmental authorities, or emergency vehicles such as fire trucks, police cars or ambulances.
- (b) Noise created to give warning of emergencies or signaling particular times of the day, such as church bells and/or clocks.
- (c) Noise generated by parades, carnivals and other special public social events, sporting events or celebrations sponsored by the Town or the State, or a private entity which has been granted a valid permit by the Town to conduct such parade, carnival, social event, sporting event or celebration.

Section 13-61. Compliance with Request from Police Officers.

If a police officer has reason to believe that there is a violation of this Article, such officer may request that a person turn down or off the sound amplifying equipment suspected of generating the noise so that measurements of ambient noise may be made. Refusal to turn down or off such sound amplifying equipment shall be a violation of this Section.

Voted: 10-16-01
 Published: 11-29-01
 Effective: 12-20-01

Minimum Rates and Classifications for
Heavy/Highway Construction

ID#: 24-69195

Connecticut Department of Labor
Wage and Workplace Standards Division

By virtue of the authority vested in the Labor Commissioner under provisions of Section 31-53 of the General Statutes of Connecticut, as amended, the following are declared to be the prevailing rates and welfare payments and will apply only where the contract is advertised for bid within 20 days of the date on which the rates are established. Any contractor or subcontractor not obligated by agreement to pay to the welfare and pension fund shall pay this amount to each employee as part of his/her hourly wages.

Project Number: CRDA #24-027

Project Town: East Hartford

State#:

FAP#:

Project: East Hartford McCartin School: Abatement & Demolition

CLASSIFICATION	Hourly Rate	Benefits
1) Boilermaker	46.21	29.35
1a) Bricklayer, Cement Masons, Cement Finishers, Plasterers, Stone Masons	41.63	34.50
2) Carpenters, Piledrivermen	39.54	28.68
2a) Diver Tenders	39.54	28.68
3) Divers	48.0	28.68
03a) Millwrights	40.56	28.87
4) Painters: (Bridge Construction) Brush, Roller, Blasting (Sand, Water, etc.), Spray	57.85	25.95
4a) Painters: Brush and Roller	38.07	25.80
4b) Painters: Spray Only	41.07	25.80

As of: November 24, 2024

4c) Painters: Steel Only	40.07	25.80
4d) Painters: Blast and Spray	41.07	25.80
4e) Painters: Tanks, Tower and Swing	40.07	25.80
4f) Elevated Tanks (60 feet and above)	47.07	25.80
5) Electrician (Trade License required: E-1,2 L-5,6 C-5,6 T-1,2 L-1,2 V-1,2,7,8,9)	45.75	33.97+3% of gross wage
6) Ironworkers: Ornamental, Reinforcing, Structural, and Precast Concrete Erection	45.25	41.27 + a
7) Plumbers (Trade License required: (P-1,2,6,7,8,9 J-1,2,3,4 SP-1,2) and Pipefitters (Including HVAC Work) (Trade License required: S-1,2,3,4,5,6,7,8 B-1,2,3,4 D-1,2,3,4 G-1, G-2, G-8, G-9)	49.58	36.15
----LABORERS----		
8) Group 1: General Laborers and concrete specialist	34.5	27.26
8) Group 1a: Acetylene Burners (Hours worked with a torch)	35.5	27.26
9) Group 2: Chain saw operators, fence and guard rail erectors, pneumatic tool operators, powdermen	34.75	27.26
10) Group 3: Pipelayers	35.0	27.26
11) Group 4: Jackhammer/Pavement breaker (handheld); mason tenders (cement/concrete), catch basin builders, asphalt rakers, air track operators, block paver, curb setter and forklift operators	35.0	27.26

As of: November 24, 2024

12) Group 5: Toxic waste removal (non-mechanical systems)	36.5	27.26
13) Group 6: Blasters	36.25	27.26
Group 7: Asbestos/lead removal, non-mechanical systems (does not include leaded joint pipe)	37.5	27.26
Group 8: Traffic control signalmen	20.7	27.26
Group 9: Hydraulic Drills	35.25	27.26
Group 10: Toxic Waste Removers A or B With PPE	37.5	27.26
----LABORERS (TUNNEL CONSTRUCTION, FREE AIR). Shield Drive and Liner Plate Tunnels in Free Air.----		
13a) Miners, Motormen, Mucking Machine Operators, Nozzle Men, Grout Men, Shaft & Tunnel Steel & Rodmen, Shield & Erector, Arm Operator, Cable Tenders	36.73	27.26 + a
13b) Brakemen, Trackmen, Miners' Helpers and all other men	35.76	27.26 + a
----CLEANING, CONCRETE AND CAULKING TUNNEL----		
14) Concrete Workers, Form Movers, and Strippers	35.76	27.26 + a
15) Form Erectors	36.09	27.26 + a
----ROCK SHAFT LINING, CONCRETE, LINING OF SAME AND TUNNEL IN FREE AIR:----		
16) Brakemen, Trackmen, Tunnel Laborers, Shaft Laborers, Miners Helpers	35.76	27.26 + a

As of: November 24, 2024

17) Laborers Topside, Cage Tenders, Bellman	35.65	27.26 + a
18) Miners	36.73	27.26 + a
----TUNNELS, CAISSON AND CYLINDER WORK IN COMPRESSED AIR: ---		
-		
18a) Blaster	43.22	27.26 + a
19) Brakemen, Trackmen, Groutman, Laborers, Outside Lock Tender, Gauge Tenders	43.02	27.26 + a
20) Change House Attendants, Powder Watchmen, Top on Iron Bolts	41.04	27.26 + a
21) Mucking Machine Operator, Grout Boss, Track Boss	43.81	27.26 + a
----TRUCK DRIVERS----(*see note below)		
Two Axle Trucks, Helpers	33.16	32.36 + a
Three Axle Trucks; Two Axle Ready Mix	33.27	32.36 + a
Three Axle Ready Mix	33.33	32.36 + a
Four Axle Trucks	33.39	32.36 + a
Four Axle Ready-Mix	33.44	32.36 + a
Heavy Duty Trailer (40 tons and over)	35.66	32.36 + a

As of: November 24, 2024

Specialized earth moving equipment other than conventional type on-the road trucks and semi-trailer (including Euclids)	33.44	32.36 + a
Heavy Duty Trailer (up to 40 tons)	34.39	32.36 + a
Snorkle Truck	33.54	32.36 + a
----POWER EQUIPMENT OPERATORS----		
Group 1: Crane Handling or Erecting Structural Steel or Stone, Hoisting Engineer (2 drums or over). (Trade License Required)	55.42	28.80 + a
Group 1a: Front End Loader (7 cubic yards or over); Work Boat 26 ft. and over.	50.79	28.80 + a
Group 2: Cranes (100 ton rate capacity and over); Bauer Drill/Caisson. (Trade License Required)	55.03	28.80 + a
Group 2a: Cranes (under 100 ton rated capacity).	54.09	28.80 + a
Group 2b: Excavator over 2 cubic yards; Pile Driver (\$3.00 premium when operator controls hammer).	50.4	28.80 + a
Group 3: Excavator; Gradall; Master Mechanic; Hoisting Engineer (all types of equipment where a drum and cable are used to hoist or drag material regardless of motive power of operation), Rubber Tire Excavator (Drott-1085 or similar); Grader Operator; Bulldozer Fine Grade (slopes, shaping, laser or GPS, etc.). (Trade License Required)	49.45	28.80 + a
Group 4: Trenching Machines; Lighter Derrick; CMI Machine or Similar; Koehring Loader (Skooper).	48.97	28.80 + a
Group 5: Specialty Railroad Equipment; Asphalt Paver; Asphalt Spreader; Asphalt Reclaiming Machine; Line Grinder; Concrete Pumps; Drills with Self Contained Power Units; Boring Machine; Post Hole Digger; Auger; Pounder; Well Digger; Milling Machine (over 24" mandrel)	48.22	28.80 + a

As of: November 24, 2024

Group 5 continued: Side Boom; Combination Hoe and Loader; Directional Driller.	48.22	28.80 + a
Group 6: Front End Loader (3 up to 7 cubic yards); Bulldozer (rough grade dozer).	47.83	28.80 + a
Group 7: Asphalt Roller; Concrete Saws and Cutters (ride on types); Vermeer Concrete Cutter; Stump Grinder; Scraper; Snooper; Skidder; Milling Machine (24" and under Mandrel)	47.4	28.80 + a
Group 8: Mechanic, Grease Truck Operator, Hydroblaster, Barrier Mover, Power Stone Spreader; Welder; Work Boat under 26 ft.; Transfer Machine.	46.9	28.80 + a
Group 9: Front End Loader (under 3 cubic yards), Skid Steer Loader regardless of attachments (Bobcat or Similar); Fork Lift, Power Chipper; Landscape Equipment (including hydroseeder), Vacuum Excavation Truck and Hydrovac Excavation Truck (27 HG pressure or greater).	46.35	28.80 + a
Group 10: Vibratory Hammer, Ice Machine, Diesel and Air Hammer, etc.	43.77	28.80 + a
Group 11: Conveyor, Earth Roller; Power Pavement Breaker (whiphammer), Robot Demolition Equipment.	43.77	28.80 + a
Group 12: Wellpoint Operator.	43.69	28.80 + a
Group 13: Compressor Battery Operator.	42.97	28.80 + a
Group 14: Elevator Operator; Tow Motor Operator (Solid Tire No Rough Terrain).	41.52	28.80 + a
Group 15: Generator Operator; Compressor Operator; Pump Operator; Welding Machine Operator; Heater Operator.	41.01	28.80 + a
Group 16: Maintenance Engineer.	40.19	28.80 + a

As of: November 24, 2024

Group 17: Portable Asphalt Plant Operator; Portable Crusher Plant Operator; Portable Concrete Plant Operator., Portable Grout Plant Operator, Portable Water Filtration Plant Operator.	45.63	28.80 + a
---	-------	-----------

Group 18: Power Safety Boat; Vacuum Truck; Zim Mixer; Sweeper; (minimum for any job requiring CDL license).	42.57	28.80 + a
---	-------	-----------

Surveyor: Chief of Party	45.87	28.80 + a
--------------------------	-------	-----------

Surveyor: Assistant Chief of Party	42.3	28.80 + a
------------------------------------	------	-----------

Surveyor: Instrument Man	40.7	28.80 + a
--------------------------	------	-----------

Surveyor: Rodman or Chairman	35.03	28.80 + a
------------------------------	-------	-----------

**NOTE: SEE BELOW

----LINE CONSTRUCTION----(Railroad Construction and Maintenance)----

20) Lineman, Cable Splicer, Technician	48.84	18.07
--	-------	-------

21) Heavy Equipment Operator	42.26	6.5% + 19.88
------------------------------	-------	--------------

22) Equipment Operator, Tractor Trailer Driver, Material Men	40.96	6.5% + 19.21
--	-------	--------------

23) Driver Groundmen	26.5	6.5% + 9.00
----------------------	------	-------------

23a) Truck Driver	40.96	6.5% + 17.76
-------------------	-------	--------------

----LINE CONSTRUCTION----

As of: November 24, 2024

24) Driver Groundmen	30.92	6.5% + 9.70
25) Groundmen	22.67	6.5% + 6.20
26) Heavy Equipment Operators	37.1	6.5% + 10.70
27) Linemen, Cable Splicers, Dynamite Men	41.22	6.5% + 12.20
28) Material Men, Tractor Trailer Drivers, Equipment Operators	35.04	6.5% + 10.45

Welders: Rate for craft to which welding is incidental.

Surveyors: Hazardous material removal: \$3.00 per hour premium.

*Note: Hazardous waste removal work receives additional \$1.25 per hour for truck drivers.

**Note: Hazardous waste premium \$3.00 per hour over classified rate

Crane with 150 ft. boom (including jib) - \$1.50 extra

Crane with 200 ft. boom (including jib) - \$2.50 extra

Crane with 250 ft. boom (including jib) - \$5.00 extra

Crane with 300 ft. boom (including jib) - \$7.00 extra

Crane with 400 ft. boom (including jib) - \$10.00 extra

All classifications that indicate a percentage of the fringe benefits must be calculated at the percentage rate times the "base hourly rate".

Apprentices duly registered under the Commissioner of Labor's regulations on "Work Training Standards for Apprenticeship and Training Programs" Section 31-51-d-1 to 12, are allowed to be paid the appropriate percentage of the prevailing journeymen hourly base and the full fringe benefit rate, providing the work site ratio shall not be less than one full-time journeyman instructing and supervising the work of each apprentice in a specific trade.

~~Connecticut General Statute Section 31-55a: Annual Adjustments to wage rates by contractors doing state work
~~

The Prevailing wage rates applicable to this project are subject to annual adjustments each July 1st for the duration of the project.

Each contractor shall pay the annual adjusted prevailing wage rate that is in effect each July 1st, as posted by the Department of Labor.

It is the contractor's responsibility to obtain the annual adjusted prevailing wage rate increases directly from the Department of Labor's website.

The annual adjustments will be posted on the Department of Labor's Web page:

***.ct.gov/dol. For those without internet access, please contact the division listed below.

The Department of Labor will continue to issue the initial prevailing wage rate schedule to the Contracting Agency for the project.

All subsequent annual adjustments will be posted on our Web Site for contractor access.

Contracting Agencies are under no obligation pursuant to State labor law to pay any increase due to the annual adjustment provision.

Effective October 1, 2005 - Public Act 05-50: any person performing the work of any mechanic, laborer, or worker shall be paid prevailing wage

All Person who perform work ON SITE must be paid prevailing wage for the appropriate mechanic, laborer, or worker classification.

All certified payrolls must list the hours worked and wages paid to All Persons who perform work ON SITE regardless of their ownership i.e.: (Owners, Corporate Officers, LLC Members, Independent Contractors, et. al)

Reporting and payment of wages is required regardless of any contractual relationship alleged to exist between the contractor and such person.

~~Unlisted classifications needed for work not included within the scope of the classifications listed may be added after award only as provided in the labor standards contract clause (29 CFR 5.5 (a) (1) (ii)).

Please direct any questions which you may have pertaining to classification of work and payment of prevailing wages to the Wage and Workplace Standards Division, telephone (860)263-6790.

Minimum Rates and Classifications
for Building Construction

ID#: 24-69195

Connecticut Department of Labor
Wage and Workplace Standards Division

By virtue of the authority vested in the Labor Commissioner under provisions of Section 31-53 of the General Statutes of Connecticut, as amended, the following are declared to be the prevailing rates and welfare payments and will apply only where the contract is advertised for bid within 20 days of the date on which the rates are established. Any contractor or subcontractor not obligated by agreement to pay to the welfare and pension fund shall pay this amount to each employee as part of his/her hourly wages.

Project Number: CRDA #24-027

Project Town: East Hartford

State#:

FAP#:

Project: East Hartford McCartin School: Abatement & Demolition

CLASSIFICATION	Hourly Rate	Benefits
1b) Asbestos/Toxic Waste Removal Laborers: Asbestos removal and encapsulation (except its removal from mechanical systems which are not to be scrapped), toxic waste removers, blasters. **See Laborers Group 7**		
1c) Asbestos Worker/Heat and Frost Insulator	47.06	33.30
2) Boilermaker	46.21	29.35
3a) Bricklayer, Cement Mason, Concrete Finisher (including caulking), Stone Masons	41.11	34.65 + a
3b) Tile Setter	38.81	32.20
3c) Tile and Stone Finishers	32.0	26.69
3d) Marble & Terrazzo Finishers	33.0	25.69
3e) Plasterer	44.52	29.63

-----LABORERS-----

4) Group 1: General laborers, carpenter tenders, concrete specialists, wrecking laborers and fire watchers.	34.5	27.26
4) Group 1a: Acetylene Burners (Hours worked with a torch)	35.5	27.26
4a) Group 2: Mortar mixers, plaster tender, power buggy operators, powdermen, fireproofers/mixer/nozzleman (Person running mixer and spraying fireproof only).	34.75	27.26
4b) Group 3: Jackhammer operators/pavement breaker, mason tender (brick), mason tender (cement/concrete), forklift operators and forklift operators (masonry).	35.0	27.26
4c) **Group 4: Pipelayers (Installation of water, storm drainage or sewage lines outside of the building line with P6, P7 license) (the pipelayer rate shall apply only to one or two employees of the total crew who primary task is to actually perform the mating of pipe sections) P6 and P7 rate is \$26.80.	35.5	27.26
4d) Group 5: Air track operator, sand blaster and hydraulic drills.	35.25	27.26
4e) Group 6: Blasters, nuclear and toxic waste removal.	37.5	27.26
4f) Group 7: Asbestos/lead removal and encapsulation (except it's removal from mechanical systems which are not to be scrapped).	37.5	27.26
4g) Group 8: Bottom men on open air caisson, cylindrical work and boring crew.	35.0	27.26
4h) Group 9: Top men on open air caisson, cylindrical work and boring crew.	34.5	27.26
4i) Group 10: Traffic Control Signalman	20.7	27.26
4j) Group 11: Toxic Waste Removers A or B With PPE	37.5	27.26

As of: November 24, 2024

5) Carpenter, Acoustical Ceiling Installation, Soft Floor/Carpet Laying, Metal Stud Installation, Form Work and Scaffold Building, Drywall Hanging, Modular-Furniture Systems Installers, Lathers, Piledrivers, Resilient Floor Layers.	39.54	28.68
---	-------	-------

5a) Millwrights	40.56	28.87
-----------------	-------	-------

6) Electrical Worker (including low voltage wiring) (Trade License required: E1,2 L-5,6 C-5,6 T-1,2 L-1,2 V-1,2,7,8,9)	45.75	33.97+3% of gross wage
--	-------	------------------------

7a) Elevator Mechanic (Trade License required: R-1,2,5,6)	64.01	39.19+a+b
---	-------	-----------

-----LINE CONSTRUCTION-----

Groundman	26.5	6.5% + 9.00
-----------	------	-------------

Linemen/Cable Splicer	48.19	6.5% + 22.00
-----------------------	-------	--------------

8) Glazier (Trade License required: FG-1,2)	41.63	25.80+ a
---	-------	----------

9) Ironworker, Ornamental, Reinforcing, Structural, and Precast Concrete Erection	45.25	41.27 + a
---	-------	-----------

-----OPERATORS-----

Group 1: Crane Handling or Erecting Structural Steel or Stone; Hoisting Engineer (2 drums or over). (Trade License Required)	55.42	28.80 + a
--	-------	-----------

Group 1a: Front End Loader (7 cubic yards or over); Work Boat 26 ft. and Over	50.79	28.80 + a
---	-------	-----------

Group 2: Cranes (100 ton rate capacity and over); Bauer Drill/Caisson. (Trade License Required)	55.03	28.80 + a
---	-------	-----------

As of: November 24, 2024

Group 2a: Cranes (under 100 ton rated capacity).	54.09	28.80 + a
Group 2b: Excavator over 2 cubic yards; Pile Driver (\$3.00 premium when operator controls hammer)	50.4	28.80 + a
Group 3: Excavator; Gradall; Master Mechanic; Hoisting Engineer (all types of equipment where a drum and cable are used to hoist or drag material regardless of motive power of operation), Rubber Tire Excavator (Drott-1085 or similar); Grader Operator; Bulldozer Finegrade. (slopes, shaping, laser or GPS, etc.). (Trade License Required)	49.45	28.80 + a
Group 4: Trenching Machines; Lighter Derrick; CMI Machine or Similar; Koehring Loader (Skooper); Goldhofer.	48.97	28.80 + a
Group 5: Specialty Railroad Equipment; Asphalt Spreader, Asphalt Reclaiming Machine; Line Grinder; Concrete Pumps; Drills with Self Contained Power Units; Boring Machine; Post Hole Digger; Auger; Pounder; Well Digger; Milling Machine (over 24 mandrel).	48.22	28.80 + a
Group 5 continued: Side Boom; Combination Hoe and Loader; Directional Driller.	48.22	28.80 + a
Group 6: Front End Loader (3 up to 7 cubic yards); Bulldozer (rough grade dozer).	47.83	28.80 + a
Group 7: Asphalt Roller; Concrete Saws and Cutters (ride on types); Vermeer Concrete Cutter; Stump Grinder; Scraper; Snooper; Skidder; Milling Machine (24" and under mandrel).	47.4	28.80 + a
Group 8: Mechanic; Grease Truck Operator; Hydroblaster; Barrier Mover; Power Stone Spreader; Welding; Work Boat Under 26 ft.; Transfer Machine; Rigger Foreman.	46.9	28.80 + a
Group 9: Front End Loader (under 3 cubic yards); Skid Steer Loader regardless of attachments; (Bobcat or Similar); Forklift, Power Chipper; Landscape Equipment (including Hydroseeder); Vacuum Excavation Truck and Hydrovac Excavation Truck (27 HG pressure or greater).	46.35	28.80 + a

As of: November 24, 2024

Group 10: Vibratory hammer; ice machine; diesel and air, hammer, etc.	43.77	28.80 + a
Group 11: Conveyor, earth roller, power pavement breaker (whiphammer), robot demolition equipment.	43.77	28.80 + a
Group 12: Wellpoint Operator.	43.69	28.80 + a
Group 13: Compressor Battery Operator.	42.97	28.80 + a
Group 14: Elevator Operator; Tow Motor Operator (solid tire no rough terrain).	41.52	28.80 + a
Group 15: Generator Operator; Compressor Operator; Pump Operator; Welding Machine Operator; Heater Operator.	41.01	28.80 + a
Group 16: Maintenance Engineer.	40.19	28.80 + a
Group 17: Portable Asphalt Plant Operator; Portable Crusher Plant Operator; Portable Concrete Plant Operator; Portable Grout Plant Operator; Portable Water Filtration Plant Operator.	45.63	28.80 + a
Group 18: Power Safety Boat; Vacuum Truck; Zim Mixer; Sweeper; (Minimum for any job requiring a CDL license); Rigger; Signalman.	42.57	28.80 + a
Surveyor: Chief of Party	45.87	28.80 + a
Surveyor: Assistant Chief of Party	42.3	28.80 + a
Surveyor: Instrument Man	40.7	28.80 + a
Surveyor: Rodman or Chainman	35.03	28.80 + a

-----PAINTERS (Including Drywall Finishing)-----

As of: November 24, 2024

10a) Brush and Roller	38.07	25.80
10b) Taping Only/Drywall Finishing	38.82	25.80
10c) Paperhanger and Red Label	38.57	25.80
10e) Blast and Spray	41.07	25.80
11) Plumber (excluding HVAC pipe installation) (Trade License required: P-1,2,6,7,8,9 J-1,2,3,4 SP-1,2)	49.58	36.15
12) Well Digger, Pile Testing Machine	37.26	24.05 + a
13) Roofer (composition)	42.5	21.68
14) Roofer (slate & tile)	43.0	21.68
15) Sheetmetal Worker (Trade License required for HVAC and Ductwork: SM-1,SM-2,SM-3,SM-4,SM-5,SM-6)	43.89	42.90
16) Pipefitter (Including HVAC work) (Trade License required: S-1,2,3,4,5,6,7,8 B-1,2,3,4 D-1,2,3,4, G-1, G-2, G-8 & G-9)	49.58	36.15
-----TRUCK DRIVERS-----		
17a) 2 Axle, Helpers	33.16	32.36 + a
17b) 3 Axle, 2 Axle Ready Mix	33.27	32.36 + a

As of: November 24, 2024

17c) 3 Axle Ready Mix	33.33	32.36 + a
17d) 4 Axle	33.39	32.36 + a
17e) 4 Axle Ready Mix	33.44	32.36 + a
17f) Heavy Duty Trailer (40 Tons and Over)	35.66	32.36 + a
17g) Specialized Earth Moving Equipment (Other Than Conventional Type on-the-Road Trucks and Semi-Trailers, Including Euclids)	33.44	32.36 + a
17h) Heavy Duty Trailer up to 40 tons	34.39	32.36 + a
17i) Snorkle Truck	33.54	32.36 + a
18) Sprinkler Fitter (Trade License required: F-1,2,3,4)	49.98	32.85 + a
19) Theatrical Stage Journeyman	25.76	7.34

Welders: Rate for craft to which welding is incidental.

Surveyors: Hazardous material removal: \$3.00 per hour premium.

*Note: Hazardous waste removal work receives additional \$1.25 per hour for truck drivers.

**Note: Hazardous waste premium \$3.00 per hour over classified rate

Crane with 150 ft. boom (including jib) - \$1.50 extra

Crane with 200 ft. boom (including jib) - \$2.50 extra

Crane with 250 ft. boom (including jib) - \$5.00 extra

Crane with 300 ft. boom (including jib) - \$7.00 extra

Crane with 400 ft. boom (including jib) - \$10.00 extra

All classifications that indicate a percentage of the fringe benefits must be calculated at the percentage rate times the "base hourly rate".

Apprentices duly registered under the Commissioner of Labor's regulations on "Work Training Standards for Apprenticeship and Training Programs" Section 31-51-d-1 to 12, are allowed to be paid the appropriate percentage of the prevailing journeymen hourly base and the full fringe benefit rate, providing the work site ratio shall not be less than one full-time journeyman instructing and supervising the work of each apprentice in a specific trade.

The Prevailing wage rates applicable to this project are subject to annual adjustments each July 1st for the duration of the project.

Each contractor shall pay the annual adjusted prevailing wage rate that is in effect each July 1st, as posted by the Department of Labor.

It is the contractor's responsibility to obtain the annual adjusted prevailing wage rate increases directly from the Department of Labor's website.

The annual adjustments will be posted on the Department of Labor's Web page:

***.ct.gov/dol. For those without internet access, please contact the division listed below.

The Department of Labor will continue to issue the initial prevailing wage rate schedule to the Contracting Agency for the project.

All subsequent annual adjustments will be posted on our Web Site for contractor access.

Contracting Agencies are under no obligation pursuant to State labor law to pay any increase due to the annual adjustment provision.

Effective October 1, 2005 - Public Act 05-50: any person performing the work of any mechanic, laborer, or worker shall be paid prevailing wage

All Person who perform work ON SITE must be paid prevailing wage for the appropriate mechanic, laborer, or worker classification.

All certified payrolls must list the hours worked and wages paid to All Persons who perform work ON SITE regardless of their ownership i.e.: (Owners, Corporate Officers, LLC Members, Independent Contractors, et. al)

Reporting and payment of wages is required regardless of any contractual relationship alleged to exist between the contractor and such person.

~~Unlisted classifications needed for work not included within the scope of the classifications listed may be added after award only as provided in the labor standards contract clause (29 CFR 5.5 (a) (1) (ii)).

Please direct any questions which you may have pertaining to classification of work and payment of prevailing wages to the Wage and Workplace Standards Division, telephone (860)263-6790.

As of: November 24, 2024

As of: November 24, 2024

CRDA

Capital Region
Development Authority

McCartin School – Abatement & Demolition
70 Canterbury ST, East Hartford, CT
CRDA Project # 24-027

November 26, 2024

Sign In Sheet:

Name:

Company:

Email:

1. Neil Boies BESLEY NOBLES BOIES@N.CI.COM

2. Connor Vogel SRC Construction Services LLC Connor.Vogel@SRCConstructs.com

3. Kurt Gopree Spectrum Environmental LLC Kgopree@Spectrum-env.com

4. Kyle Faust Accurate Insulation Kyle@accurateinsl.com

Name:

Company:

Email:

5. Sarah Sanchez Manufact Business mbrandon@manufact.com

6. Chris Gamber D'Amato Const cgamber@damatoconstruction.com

7. Robert Howard News, LLC info@newsllc.net

8. Christopher Gdy NEX, LLC CGODEK@NEXCLLC.COM

9. Josh Egerly NEX, LLC Jegerly@NEXCLLC.COM

10. Dave MacKenzie STAMFORD WRECKING dmacKENZIE@DEMOLITIONSERVICES.COM

11. Natalia Wiese Wiese Construction natalia@wiese-construction.com

12. Stuti Patriki Sisters-1 S.Patriki@brstrect.com

13. Hector Martine Brothers and sons constructionllc B-Sconstructionllc@yahoo.com

14. The Roja? 460 920 9627 JS@JelDeme.com

15. Carlos Smith 781-929-7050 C.Smith@SMIencirromental.com

16. Bill Finn Cel 7. 845. 8400 bfinn@amerensiro.com AmericanEnvu

17. _____

18. _____

19. _____

20. _____